



LIEUTENANT GOVERNOR'S  
OFFICE

'16 OCT 10 AM 11:07

OFFICE OF THE GOVERNOR  
STATE OF HAWAII  
STATE CAPITOL  
HONOLULU, HAWAII 96813

SCOTT MORISHIGE

- Chair of the Hawaii Interagency Council on Homelessness •  
Telephone (808) 586-0193

### Agenda

Hawaii Interagency Council on Homelessness (HICH)  
October 17, 2016  
10:00 a.m. to 12:00 p.m.  
Honolulu International Airport Conference Facilities  
Interisland Terminal Conference Room 3 & 4  
300 Rodgers Boulevard  
Honolulu, HI 96819

- I. Call to Order, Taking of the Roll
- II. Overview and Approval of Agenda (Vote)
- III. Approval of Minutes (Vote)
  - A. Regular Meeting Minutes, August 29, 2016
- IV. Public Testimony (One minute per testifier)

Public testimony on any agenda item shall be taken at this time.
- V. Permitted Interaction Group Reports
  - A. Report and discussion of the permitted interaction group established pursuant to Hawaii Revised Statutes (H.R.S.) §92-2.5 to review HICH structure and make recommendations.
  - B. Report and discussion of the permitted interaction group established pursuant to Hawaii Revised Statutes (H.R.S.) §92-2.5 to review and develop a sustainability plan for the Hawaii Pathways Project (HPP).
- VI. New Business
  - A. Discussion and possible action regarding the adoption of a resolution requesting the Hawaii State Legislature, City and County Councils, and Hawaii's Continuum of Care to utilize the Hawaii State

Framework to Address Homelessness to guide the formulation of policies and programming to address homelessness. (Vote)

Discussion will include an overview of the following items:

- 2016 Hawaii State Framework to Address Homelessness
- Presentation from technical assistance providers HomeBase and OrgCode Consulting, Inc. regarding the Coordinated Entry System and intersection with the State Framework to Address Homelessness
- Presentation from representatives of the Continuum of Care relating to the 2016 Continuum of Care Program Competition and priorities.

B. Discussion regarding private sector efforts to address homelessness. Discussion will include an overview of the following items:

- Presentation from HomeAid Hawaii

## VII. General Announcements

A. Chairperson and Staff Reports: September/October 2016 Status Report

- Accomplishments / Highlights
- Planned Activities

B. Pursuant to H.R.S. §346-382(a)(17), the Council requests that the Mayors of the Counties of Hawaii and Kauai designate a representative of the continuum of care programs for their respective counties.

C. Written Reports from Council Members. The following written updates are provided for the Council's consideration and review (the full write-ups for each representative will be provided):

- *Department of Human Services* – Brief update on staffing changes within the department, and department efforts to address homelessness.
- *Department of Health* – Brief update on activities of the Adult Mental Health Division (AMHD) and Alcohol and Drug Abuse Division (ADAD).
- *Department of Public Safety* – Brief update on efforts to improve the process in which inmates are transitioned from incarceration. This includes: Establishment of a Re-Entry Coordination Office; and Revitalizing the Comprehensive Re-Entry Plan.
- *Department of Hawaiian Homelands* – Brief update on efforts by the department to develop permanent affordable housing for beneficiaries. The department also highlights the HALE program for beneficiaries facing financial arrears, as well as efforts to explore rental housing on Hawaii Island and in Waimanalo.
- *Department of Defense* – Brief update on homeless persons identified within Department of Defense programs. In addition, the department is planning for a Maui Veteran Stand Down on November 3, 2016 at the Hawaii Army National Guard's Pu'unene Armory.

- *Department of the Attorney General* – The department continues to provide legal counsel and advice regarding matters related to homelessness.
- *Department of Education* – Brief update on the implementation of updates to the McKinney Vento Act based upon the passage of the Every Student Succeeds Act (ESSA).
- *Hawaii State Senate* – Senator Chun Oakland shared handouts regarding community resources, as well as housing inventory statewide.
- *County of Honolulu* – Brief update on Housing First, the Mayor Challenge to End Veteran Homelessness, Hale Mauiola, and housing developments specifically to meet the needs of persons experiencing homelessness. In addition, the City provided an update on the Heroes Housing Heroes landlord event scheduled for October 11, 2016.
- *County of Hawaii* – The county has received 100 applicants for the new Hale Kikaha at The Friendly Place, which is the micro unit permanent supportive housing project that will be completed in late October. The county is also moving forward with faith-based summits in East and West Hawaii, with the East Hawaii summit scheduled for October 5 and West Hawaii summit scheduled in early December.
- *County of Maui* – The Maui County Parks and Recreation Department has temporarily closed campsites at Kanaha Beach Park. In addition, the Maui County Council approved two homeless positions to be housed in a new Homeless Division under the Department of Housing & Human Concerns, and is considering a proposal relating to lying down on public sidewalks. In addition, the Department of Housing & Human Concerns received additional grant funding for homeless programs, which will be used for county outreach and cleanup efforts.
- *U.S. Department of Housing and Urban Development (HUD)* – Brief update for the deadlines to submit the 2016 Annual Homeless Assessment Report (AHAR), as well as details regarding the 2016 Continuum of Care program competition.
- *Partners in Care, Oahu's Continuum of Care* - Brief update on the development of a homeless dashboard for the Continuum of Care, and an update on training activities related to Coordinated Entry.

#### VIII. Executive Session

Pursuant to H.R.S. §92-7(a), the Council may, when deemed necessary, hold an Executive Session on any agenda item without the written public notice if the Executive Session was not anticipated in advance. Any such Executive Session shall be held pursuant to H.R.S. §92-4 and shall be limited to those items described in H.R.S. §92-5(a). Discussions held in Executive Session are closed to the public.

#### IX. Topics for Upcoming Meetings

A. Open for Council Suggestion

#### X. Meeting Schedule

The following Council meetings are scheduled for the remainder of the year:

- Monday, December 12, 2016

XI. Adjourn (Vote)

Hawaii Interagency Council on Homelessness (HICH)  
Honolulu International Airport Conference Rooms 3 & 4  
August 29, 2016  
10:00 am – 12:00 pm

Council Attendees:

Scott Morishige  
Rachael Wong  
Harold Brackeen III  
Virginia Pressler  
Linda Chu Takayama

Renee Sonobe-Hong for  
Kamana'o Mills for  
Bruce Oliveira for  
Douglas Chin  
Toby Portner for  
Suzanne Chun Oakland  
Jo Jordan  
Hakim Ouansafi  
Jun Yang for  
Carol Reimann for  
Kanani Fu for  
Jennifer Stasch

Maude Cumming

Rachelle Russo  
Rebecca Borja

Dave Rolf

Absent:

Staff:

Special Guests:

Chair  
Director of the Department of Human Services  
Administrator of the Homeless Programs Office  
Director of the Department of Health  
Director of the Department of Labor and Industrial  
Relations  
Director of the Department of Public Safety  
Chairperson of the Hawaiian Homes Commission  
Adjutant General of the Department of Defense  
Attorney General  
Superintendent of the Department of Education  
Hawaii State Senate  
Hawaii State House of Representatives  
Executive Director of the Hawaii Public Housing Authority  
Mayor of the City & County of Honolulu  
Mayor of the County of Maui  
Mayor of the County of Kauai  
Continuum of Care for the City & County of Honolulu,  
Partners In Care  
Continuum of Care for the County of Maui, Bridging the  
Gap  
U.S. Department of Veterans Affairs  
U.S. Department of Housing and Urban Development,  
Office of Community Planning and Development  
Business Community Representative

Representatives from the Department of Business,  
Economic, Development & Tourism; Office of Hawaiian  
Affairs; County of Hawaii; Continuum of Care for the  
County of Hawaii; Continuum of Care for the County of  
Kauai; and Faith-based Community.

Tamah-Lani Noh, Community Engagement Specialist; Julie  
Ford, Special Assistant; Julie Haruki, Homelessness  
Assistant

Andrea Suzuki, Deputy Attorney General; Katy Miller, U.S.  
Interagency Council on Homelessness; Sue Augustus,  
Corporation for Supportive Housing; Judy Mohr Peterson,  
Med-QUEST Division; Eddie Mersereau, Department of  
Health; Lynn Fallin, Department of Health; Michael Liu,  
Mid-Pacific Institute; Erena Yoshida, Mid-Pacific Institute

- I. **Call to Order, Taking of the Roll.** Roll taken, quorum established, and the meeting was called to order at 10:06 a.m. by the Chair.

Chair Morishige explained the new agenda format, and provided opening remarks. He noted that written reports from members will be requested two weeks prior to every meeting, and that a meeting packet with handouts will be distributed electronically a week prior to each meeting. The Chair mentioned there is a sign-up sheet for members of the public who wish to receive written handouts and materials for today's meeting.

The Chair introduced Deputy Attorney General Andrea Suzuki, who will be providing advice and counsel to the council.

The Chair recognized two special guests: Ms. Katy Miller from the U.S. Interagency Council on Homelessness (USICH), and Ms. Sue Augustus from the Corporation for Supportive Housing.

The Chair recognized three members of the Council who will be departing from their positions: Director Rachael Wong, Department of Human Services (DHS); Senator Suzanne Chun Oakland; and Representative Jo Jordan. Lei and a short note of appreciation were presented to each departing member.

The Chair recognized one incoming member of the Council: Ms. Jennifer Stasch, Honolulu Continuum of Care – Partners in Care (PIC). Lei was presented to Ms. Stasch.

The Chair recognized volunteers Mr. Michael Liu and Ms. Erena Yoshida, who are students attending Mid-Pacific Institute.

- II. **Overview and Approval of Agenda.** Motion to approve the agenda without amendments was made by Director Wong and seconded by Director Chu Takayama. The Chair opened the floor for discussion, and seeing none the Chair called the question. The motion passed unanimously.

- III. **Approval of Minutes.** The Chair reminded members that the July 11, 2015 meeting minutes were e-mailed to members and that copies of the minutes were included in the members' packets. The Chair provided time for members to review the minutes, and asked if there were any corrections. Motion to approve the minutes was made by Mr. Mills and seconded by Mr. Rolf. The Chair called the question. The motion passed unanimously.

IV. **New Business.**

- A. **Discussion and possible action regarding the adoption of the 2016 Hawaii State Framework to Address Homelessness, and incorporation of strategic vision from the 2012 HICH Strategic Plan to End Homelessness and H2 Draft Strategic Plan.**

Chair Morishige provided background information regarding the Hawaii State Framework to Address Homelessness, as well as the 2012 HICH Strategic Plan to End Homelessness and the H2 Draft Strategic Plan. The Chair invited special guest Ms. Katy Miller to share the perspective of the USICH and how the State Framework to Address Homelessness aligns with the national efforts of the USICH and other federal agencies.

Presentation by Ms. Katy Miller, Regional Coordinator, USICH

Ms. Miller shared that she has been working with Hawaii for a year, and has been working in the area of homelessness for 20 years. Ms. Miller shared that the USICH is a policy-making body at the federal level, which consists of leadership at the Secretary-level for 19 federal agencies. A key focus of the USICH is the implementation of its strategic plan – “Opening Doors” – which sets specific targets to address veteran homelessness, chronic homelessness, and family and youth homelessness. Since 2010, the Opening Doors strategy has resulted in a decrease in overall homelessness by 11%, a decrease in chronic homelessness by 22%, and a decrease in family homelessness by 19%. The key message of the USICH Opening Doors plan is to respond quickly to address the needs of homeless persons, and to move people rapidly into permanent housing.

In regards to the Hawaii State Framework to Address Homelessness, Ms. Miller notes that this aligns with the goals of the USICH Opening Doors plan. Ms. Miller acknowledged that Chair Morishige has looked at federal plans and maximized resources. While the framework sets an ambitious goal of 10,000 homes by 2020 – it can be done. Ms. Miller notes that other states have achieved similar goals through alignment with federal, state, and local resources – as well as alignment with the Continuum of Care (CoCs). Ms. Miller emphasized that formal adoption of the framework will continue progress in aligning federal, state, and local resources in Hawaii.

Discussion regarding agenda item IV.A.

The Chair opened the floor to questions from members regarding the agenda item.

Senator Chun Oakland directed a question to Ms. Miller, and asked if the USICH monitors homeless persons that move to Hawaii from other states. She shared that she has heard reports of approximately 100 people that moved to Puna on Hawaii Island after being released from prison on the mainland. In addition, Senator Chun Oakland expressed a concern regarding expenses incurred by the state for migrants from the Compact of Free Association (COFA) nations.

Ms. Miller responded that this is a concern she has heard in nearly all of the communities that she works with – it is not something limited only to Hawaii. Ms. Miller emphasized the importance of re-entry and discharge planning, and encouraged Hawaii to not only look at the jail and prison population, but also look at those discharged from hospitals to homelessness and youth transitioning out of foster care. She added that the issues related to persons from the COFA nations are a special need that merits careful attention. When asked specifically whether USICH collects data regarding homeless persons moving from out of state, Ms.



Miller responded that the data is collected locally and not by the USICH. Ms. Miller emphasized the importance of the Homeless Management Information System (HMIS) and working together with the CoCs that manage the HMIS data.

In response to Senator Chun Oakland's line of questioning, Chair Morishige noted that the Homeless Service Utilization Report, which uses service data from the HMIS, reports that only 10-11% of the state's homeless population are new residents that have been in Hawaii for less than 12 months. He noted that a key focus of the state's approach to addressing homelessness is on data, and that DHS will be allocating funds in Fiscal Year 2017 specifically to improve the quality of HMIS data and to focus on data analysis.

Director Wong asked Ms. Miller to elaborate on the benefits of an interagency council to address homelessness, and to provide concrete examples of specific action items supported by the USICH and interagency councils in other states.

Ms. Miller shared the example of the interagency council in Houston, Texas. The Texas council successfully ended veteran homelessness in Houston, and is now focused on the goal of ending chronic homelessness. According to Ms. Miller, the success was due to Houston's ability to measure specific goals and to focus on data.

Ms. Cummings asked a question about the role of the U.S. Department of Veterans Affairs (VA) in other interagency councils across the country and ending veteran homelessness.

Ms. Miller responded that the VA participates in the USICH, and plays a key role in the initiative to end veteran homelessness.

Senator Chun Oakland commented that she has observed an increase in homeless veterans from other states – specifically that 1 in 5 veterans that come to her office for assistance are from other states.

Chair Morishige responded that the VA is an active participant in the efforts to end veteran homelessness in Hawaii. He added that on September 19 and 20<sup>th</sup>, Community Solutions and the VA will be convening a 25 Cities sustainability review for homeless service providers to focus on the goal of ending veteran homelessness.

Chair Morishige noted that a formal adoption of the framework will support the council's efforts to align homeless strategies across the federal, state, and local levels of government. He further noted that the U.S. Department of Housing and Urban Development (HUD) is providing technical assistance from HomeBase that can assist the council in working together with the CoCs to develop implementation steps for the framework if it is formally adopted.

Motion to adopt the 2016 Hawaii State Framework to Address Homelessness, and to incorporate the strategic vision from the 2012 HICH Strategic Plan to End Homelessness and H2 Draft Strategic Plan.



Mr. Mills made a motion for adoption, which was seconded by Director Pressler.

The Chair asked if there was any further discussion.

Senator Chun Oakland commented that children and families need to be included in the framework. The Chair clarified that children and families are currently included in the framework.

Chair Morishige called the question. The motion passed with 20 members voting in the affirmative, and Representative Jordan abstaining.

**B. Discussion and possible action regarding the formation of a permitted interaction group pursuant to Hawaii Revised Statutes (H.R.S.) §92-2.5 to review HICH structure and make recommendations.**

Chair Morishige explained that this agenda item is based off a suggestion at the July 11, 2016 meeting from Director Wong to form a permitted interaction group to review the HICH structure and to make recommendations to restructure. The Chair added that the National Governors Association (NGA) has provided technical assistance to the Office of the Governor and DHS, which included specific recommendations to revisit the structure of the council. The recommendations of the NGA were distributed to members during the July 11, 2016 meeting.

To assist council members with their deliberation, the Chair and staff passed out a handout that provided a timeline of the HICH, along with copies of H.R.S. §346-381, -382, and -383.

Discussion regarding agenda item IV.B

The Chair opened the floor to questions from members regarding this agenda item.

Representative Jordan asked about the membership of the permitted interaction group.

Chair Morishige suggested that membership of the group should include the Chair or a designee, a representative from DHS, a representative from PIC, and a representative from Bridging the Gap (BTG). The Chair also requested that Deputy Attorney General Suzuki provide further clarification for members on the requirements for a permitted interaction group.

Deputy Attorney General Suzuki clarified that the membership of a permitted interaction group may consist of two or more members of the council, but should be less than the number of members which would constitute a quorum. She clarified that quorum for the council is 14 members.

Deputy Attorney General Suzuki further clarified that the purpose of the permitted interaction group and the scope of each member's authority need to be clearly

defined, and that all resulting findings and recommendations of the permitted interaction group should be presented to the council at a subsequent meeting.

Director Wong suggested the addition of a representative from one of the four counties. Ms. Cummings and Ms. Stasch concurred with Director Wong's suggestion.

Executive Director Ouansafi asked for further clarification regarding the purpose of the proposed permitted interaction group.

Chair Morishige clarified that the permitted interaction group would follow up on the recommendations of the NGA to review the structure and composition of the HICH. For example, NGA found that in other communities the chair of the council rotates among its membership. The permitted interaction group would look at the structure of similar councils in other communities, and make recommendations for consideration.

Chair Morishige asked members to consider the suggestion of Director Wong to add representation from one of the four counties.

Ms. Fu asked about the time commitment for serving on the permitted interaction group. Chair Morishige explained that the group would meet at least once prior to the next council meeting, which is scheduled for October 17, 2016.

Ms. Reimann stated that she would consent to serve on the permitted interaction group to represent the four counties.

Director Wong, Ms. Stasch, and Ms. Cummings also consented to serve on the permitted interaction group to represent DHS, PIC, and BTG respectively.

Motion to establish a permitted interaction group pursuant to Hawaii Revised Statutes (HRS) §92-2.5 to review the HICH structure and make recommendations.

Senator Chun Oakland requested a friendly amendment for the permitted interaction group to consider the composition, as well as the structure, of the HICH. The Chair consulted with Deputy Attorney General Suzuki, who clarified that a friendly amendment is allowable.

Director Pressler made a motion for adoption with the friendly amendment, which was seconded by Executive Director Ouansafi. The proposed members of the permitted interaction group are the Chair or a designee, a representative from DHS, a representative from PIC, a representative from BTG, and a representative from the County of Maui.

The Chair asked if there was any further discussion.

Representative Jordan requested clarification regarding the purpose and definition of a permitted interaction group.

Deputy Attorney General Suzuki again clarified that the council may establish a permitted interaction group to investigate a specific matter relating to the official business of the council. The membership of the group may consist of two or more members of the council, but should be less than the number of members which would constitute a quorum. All resulting findings and recommendations of the permitted interaction group shall be presented to the council at a subsequent meeting of the council.

Representative Jordan asked if the permitted interaction group established through this motion would keep minutes of their deliberations for transparency. Chair Morishige responded that his staff would take minutes for meetings of the permitted action group, and that the group would report its findings to the full council at the next meeting on October 17, 2016.

Seeing no further discussion, the Chair called the question. The motion passed unanimously.

The Chair stated that Community Engagement Specialist Tamah-Lani Noh will be in contact with the members of the permitted interaction group and will convene a meeting prior to the next meeting of the full council on October 17, 2016.

**C. Discussion and possible action regarding the formation of a permitted interaction group pursuant to Hawaii Revised Statutes (H.R.S.) §92-2.5 to review and develop a sustainability plan for the Hawaii Pathways Project.**

Chair Morishige provided background information regarding the Hawaii Pathways Project. In 2013, at the suggestion of the council, the state Department of Health (DOH) applied for and was awarded a Cooperative Agreement to Benefit Homeless Individuals (CABHI) grant from the Substance Abuse and Mental Health Services Administration (SAMHSA) to implement an evidence-based Housing First pilot project using the Pathways Housing First model. The pilot project became known as the Hawaii Pathways Project (HPP). The HPP is scheduled to end on September 29, 2016, but the DOH has requested and is expected to receive a no-cost extension until March 29, 2016 for program services. The program currently houses 61 former chronically homeless persons in permanent supportive housing. Without a sustainability plan, these persons will be at risk of falling back into homelessness. The item before the council is to establish a permitted interaction group to develop a sustainability plan for the HPP, which would address the housing needs of the persons the program currently serves and would intersect with other efforts of the council to develop permanent supportive housing on a larger scale.

To provide further background to the council, the Chair invited DOH Deputy Director Lynn Fallin and Alcohol and Drug Abuse Division (ADAD) Chief Mr. Edward Mersereau to provide an update on the current status of the HPP, including the project's performance. The Chair also invited DHS Med-QUEST Division Administrator Ms. Judy Mohr Peterson and special guest Ms. Sue Augustus from the Corporation for Supportive Housing to discuss how HPP aligns with technical



assistance efforts currently being provided to DHS, and how the technical assistance may be leveraged to assist in the development of a long-term sustainability plan for HPP.

Presentation by Deputy Director Fallin and Mr. Mersereau.

Deputy Director Fallin provided a brief presentation on the HPP, and referred to the written handout from DOH, which can be found on pages 74 and 75 of the council member's meeting packet. Deputy Director Fallin stated that the council supported the establishment of the HPP, and that the HPP is consistent with the framework to address homelessness that was adopted by the council.

Mr. Mersereau stated that a key challenge with implementation of the HPP has been the lack of affordable housing inventory in Hawaii. In spite of these challenges, Mr. Mersereau stated that the HPP project staff and providers have made great strides, and that project participants have a high rate of housing retention. Mr. Mersereau added that DOH staff have been in discussion with staff from DHS regarding the intersection between the HPP and technical assistance that DHS has received as part of the Innovation Accelerator Program (IAP). Working together with DHS, there may be a possibility to sustain efforts, such as HPP, in the long-term by utilizing Medicaid to provide ongoing tenancy supports.

Mr. Yang asked about the plan for sustainability beyond the end of the no-cost extension in March 2017.

Mr. Mersereau responded that the proposed permitted interaction group would be formed to develop and recommend a plan for sustainability of HPP.

Chair Morishige asked members to hold further questions until the conclusion of the following presentation by Ms. Mohr Peterson and Ms. Augustus.

Presentation by Med-QUEST Administrator Ms. Judy Mohr Peterson and Ms. Sue Augustus.

Ms. Mohr Peterson and Ms. Augustus distributed a handout entitled "Medicaid Innovation Accelerator Program (IAP): Community Partnerships."

Ms. Augustus introduced herself and stated that she is employed by Corporation for Supportive Housing, and is contracted by the Centers for Medicare and Medicaid Innovation (CMMI) as the IAP technical assistance provider for Hawaii. She shared that Hawaii was one of eight states that was selected by the CMMI to receive technical assistance as part of the IAP. The technical assistance Hawaii is receiving through the IAP is part of the Community Partnership track, which includes a partnership between the U.S. Department of Housing and Urban Development (HUD), SAMHSA, and the USICH. In particular, the IAP Community Partnership track brings technical assistance from national experts to help stakeholders in public housing, Medicaid, and behavioral health come together and redesign and implement plans to cover gaps in services.

Ms. Mohr Peterson introduced herself and stated that she is the Administrator of the DHS, Med-QUEST Division (MQD). She stated that Hawaii is looking to utilize Medicaid to address chronic homelessness, and that the focus is on using evidence-based national best practices and improving existing programs like Housing First and supportive wrap-around services. Ms. Mohr Peterson clarified that this is a new way of looking at services, and that Medicaid has been previously limited only to specific medical services. Ms. Mohr Peterson stated that Medicaid cannot be used to pay for room and board, but that it could be used to pay for supportive housing services. She explained that supportive housing is a specific intervention for people who, but for the availability of services, do not succeed in housing and who, but for housing, do not succeed in services. Ms. Mohr Peterson explained that the technical assistance Hawaii is receiving through the IAP can contribute to the development of a long-term sustainability plan for HPP.

Discussion regarding agenda item IV.C.

The Chair opened the floor to questions from members regarding this agenda item. Deputy Director Fallin, Mr. Mersereau, Ms. Mohr Peterson, and Ms. Augustus were available to answer questions from the members.

Ms. Cummings asked if the HPP and IAP were only on the island of Oahu.

Ms. Mohr Peterson responded that Medicaid is statewide, so the technical assistance received through the IAP will result in changes statewide for the Medicaid program.

Chair Morishige clarified that the HPP is limited to the island of Oahu, but added that the IAP will result in systemic changes that will have a statewide impact. The Chair suggested that the proposed permitted interaction group could include representation from the neighbor islands. He added that permanent supportive housing projects, similar to the HPP, are being proposed on the neighbor islands and that a permanent supportive housing project on Hawaii Island is expected to open in October 2016.

Mr. Rolf requested clarification on whether the housing provided by HPP was "permanent." He also asked what will happen to the 61 people currently housed through the program when the grant ends.

Mr. Mersereau responded that the HPP is a pilot project, and emphasized that while the housing for the clients is permanent, HPP provides supportive services that are critical to assist clients in maintaining their housing. Mr. Mersereau stated that the supportive services provided by HPP include treatment for substance abuse and mental health.

Chair Morishige provided additional clarification. He stated that HPP utilizes permanent housing vouchers that are provided by other programs, such as Section 8 or the City and State Housing First programs. However, when the grant for HPP ends, the supportive services for HPP will also end, which may potentially place the clients in jeopardy of losing their housing. The intent of the proposed permitted interaction group would be to develop a transition plan to ensure continuation of the

supportive services, and to maintain housing for the 61 clients currently housed through HPP.

Senator Chun Oakland stated that Housing First funding currently focuses on the needs of chronically homeless persons. She shared that in 2014 a number of new benefits for tenancy support were added to the Medicaid state plan, including a housing specialist and other services. She stated that it is important that the proposed permitted interaction group examine how to utilize these services to provide tenancy supports.

Mr. Rolf estimated that, based upon the funding for HPP, it appears that the cost was approximately \$32,000 per person. He asked what were the outcomes achieved as a result of HPP services.

Mr. Mersereau stated that the estimated cost of \$32,000 per person are lower than national estimates, which are approximately \$40,000 per person. He added that, through the HPP, the provider was able to place chronic homeless persons with high acuity into permanent housing. The persons served through HPP were persons with significant mental health and substance use concerns.

Senator Chun Oakland noted that no mention was made of the state Medicaid buy-in program. In addition, she suggested that the proposed permitted interaction group review services offered by the DHS Division of Vocational Rehabilitation (DVR).

Chair Morishige clarified that his office has reached out to the DVR administrator, and has been collaborating with DVR to address the needs of unsheltered homeless persons.

Chair Morishige suggested that membership of the group should include the Chair or a designee, a representative from DHS, a representative from DOH, a representative from the City & County of Honolulu, and a representative from BTG. Director Wong, Director Pressler, Mr. Yang, and Ms. Cummings all consented to serve on the proposed permitted interaction group to represent DHS, DOH, the City & County of Honolulu, and BTG respectively.

Senator Chun Oakland recommended that DHS representation on the permitted interaction group include representatives from DVR, MQD, Adult Protective Services, the Office of the Public Guardian, and the Homeless Programs Office.

Deputy Attorney General Suzuki provided clarification that the membership of the permitted interaction group should consist of members of the council or their designee.

Motion to establish a permitted interaction group pursuant to Hawaii Revised Statutes (HRS) §92-2.5 to review and develop a sustainability plan for the HPP.

Mr. Mills made a motion for adoption, which was seconded by Director Wong. The proposed members of the permitted interaction group are the Chair or a designee, a



representative from DHS, a representative from DOH, a representative from the City & County of Honolulu, and a representative from BTG.

The Chair asked if there was any further discussion.

Ms. Borja requested that a representative from PIC be added to the membership of the proposed permitted interaction group. She stated that PIC oversees housing resources through the CoC and that PIC could provide assistance in the development of a sustainability plan for the HPP.

Ms. Stasch stated that she agreed with the recommendation of Ms. Borja, and would consent to serving on the proposed permitted interaction group.

Chair Morishige consulted Deputy Attorney General Suzuki regarding a potential amendment to the motion on the floor.

Deputy Attorney General Suzuki clarified that the motion by Mr. Mills and Director Wong would need to be withdrawn, and a new motion would need to be offered if the members want to consider a new motion to add a representative from PIC to the membership of the proposed permitted interaction group.

The Chair asked Mr. Mills and Director Wong if they would consider withdrawing their motion, so that a new motion can be made to include a representative from PIC in the membership of the proposed permitted interaction group.

Mr. Mills and Director Wong withdrew their motions.

Executive Director Ouansafi made a new motion for adoption, which was seconded by Director Pressler. The proposed members of the permitted interaction group under this new motion are the Chair or a designee, a representative from DHS, a representative from DOH, a representative from the City & County of Honolulu, a representative from BTG, and a representative from PIC.

Seeing no further discussion, the Chair called the question. The motion passed unanimously.

The Chair stated that Community Engagement Specialist Tamah-Lani Noh will be in contact with the members of the permitted interaction group and will convene a meeting prior to the next meeting of the full council on October 17, 2016.

**V. General Announcements.**

**A. Chairperson and Staff Reports: July/August 2016 Status Report.**

The Chair referred to a handout entitled "Highlights of Hawaii Interagency Council on Homelessness Staff Activities, Monthly Report for July and August 2016," which is located on pages 64-66 of the member's packets.

The Chair noted that the Governor's emergency proclamation to address homelessness was extended again in early August, and will expire on October 19, 2016. He stated that this will be the final extension of the emergency proclamation, as it is necessary for the state to move forward with a longer-term strategy to address homelessness.

The Chair further noted his participation this past weekend in the Hawaii Annual Code Challenge (HACC), which brought together members of the public to use technology to address different "challenges" presented by various state agencies. The Chair reported that he presented a challenge related to the difficulties in determining the proper state agency or service provider to contact when an unsheltered person or encampment was identified by members of the public. The HACC will take place throughout the month of September.

The Chair added that he and his staff are in the process of developing legislative and budget proposals for the upcoming biennium, and that he is working closely with DHS and the Office of the Governor.

**B. Pursuant to HRS §346-382(a)(17), the Council requests that the Mayor of the Counties of Hawaii and Kauai designate a representative of the continuum of care programs for their respective counties.**

The Chair stated that there are currently two vacant seats on the council, and requested the Mayors of the Counties of Hawaii and Kauai to designate a representative of the continuum of care programs for their respective counties to fill these two vacant seats.

**C. Written Reports from Council Members.**

The Chair noted that written reports have been provided by members of the council. The written reports can be found on pages 67-82 of the member's packets.

Director Wong reported that the number of vacant positions in the Homeless Programs Office (HPO) written report needs to be revised. She stated that the vacant HPO Administrator position has now been permanently filled by Mr. Harold Brackeen III.

Chair Morishige congratulated Mr. Brackeen on his new position.

- VI. **Executive Session.** The Chair explained that a new item to the agenda was added to allow the council to enter into executive session if needed. The Chair stated that there is no reason to enter into executive session at this time.
- VII. **Topics for Upcoming Meetings.** The Chair noted that the October 17, 2016 meeting of the council will feature a presentation by HomeAid Hawaii, as well as reports from the two permitted interaction groups that were established earlier during the meeting.

The Chair asked the members if there were any additional suggestions for topics for the upcoming meeting. There was no further discussion.

- VIII. **Meeting Schedule.** The Chair reminded members that meetings are scheduled for Monday, October 17, 2016 and Monday, December 12, 2016. Both meetings will be held from 10:00 a.m. to 12:00 p.m. at the Honolulu International Airport in the Interisland Terminal, Conference Rooms 3 & 4.
- IX. **Public Testimony.** Chair Morishige opened the floor to public testimony. The public was asked to keep testimony limited to no more than one minute.
- A. **Mr. Michael Peacock, Hawaii Vet to Vet.**  
Mr. Peacock testified in regards to the importance of peer support. He noted that Hawaii Vet to Vet has been working with the DOH, Adult Mental Health Division to ensure that peer support services be written into treatment plans. He emphasized that peer specialists should be written into treatment plans, but understands that this may result in less billable hours for case management services.
- Chair Morishige thanked Mr. Peacock for his testimony.
- B. **Mr. Dave Cannel.**  
Mr. Cannel stated that he is a homeless advocate, and testified in regards to his concerns about the lack of sustained funding for homeless services.
- Chair Morishige thanked Mr. Cannel for his testimony, and noted that the state is currently in the process working on budget proposals for the upcoming biennium.
- X. **Adjourn.** Chair Morishige entertained a motion to adjourn. Motion to adjourn was made by Mr. Mills and seconded by Director Pressler. The Chair called the question. The motion passed unanimously.
- The meeting was adjourned at 11:53 a.m.

#### MINUTES CERTIFICATION

Minutes prepared by:

\_\_\_\_\_  
Tamah-Lani Noh  
Community Engagement Specialist

\_\_\_\_\_  
Date

Approved by the Hawaii Interagency Council on Homelessness at their Regular Meeting on  
October 17, 2016: [ ] As Presented [ ] As Amended

\_\_\_\_\_  
Scott S. Morishige, MSW  
Chair

\_\_\_\_\_  
Date

Hawaii Interagency Council on Homelessness (HICH)  
Permitted Interaction Group (PIG), pursuant to HRS 92-2.5,  
To review the HICH structure and composition, and make recommendations

September 21, 2016  
11:00 a.m. – 12:00 p.m.  
Hawaii State Capitol, Room 415

Present: Representative Jo Jordan (State House); Lila King (Department of Human Services); Jennifer Stasch (Partners in Care); Maude Cummings (Bridging the Gap); Carol Reimann (County of Maui); Scott Morishige (HICH Chair); Tamah-Lani Noh (Staff)

Absent: Senator Suzanne Chun Oakland (State Senate)

- I. Convening and Introductions – *The meeting convened at 11:05 a.m.*
  - a. Each member provided a brief introduction with their name and title.
  - b. Tamah-Lani Noh introduced herself as staff to the interagency council, and as recorder of minutes for this meeting.
- II. Purpose of permitted interaction group (PIG)
  - a. The Chair reviewed the purpose of the PIG, which is to review the structure and composition of the HICH and make recommendations to the full council for its next regular meeting on October 17, 2016.
  - b. As background, the Chair shared that the request to review the structure of the HICH came as a response to recommendations received from the National Governors Association (NGA).
- III. Review of history and current statutes related to the HICH (See handout – Hawaii Interagency Council on Homelessness).
  - a. The Chair briefly reviewed the history of the HICH with the PIG members.
    - i. First established as a volunteer council in 2004.
    - ii. Formally established through Executive Order in 2011.
    - iii. Formally established in statute in 2012 (Act 105, Session Laws of Hawaii 2012)
  - b. Staffing
    - i. The Coordinator on Homelessness is designated in statute as the chair of the HICH.
    - ii. The current Coordinator/Chair is the third person in this position since the HICH was established in 2011.
    - iii. The Coordinator is currently supported by four full-time staff positions, which are temporarily established as a Special Project within the Department of Human Services.

- IV. Review and discussion of the HICH in comparison to other similar organizations (See Handout – “Structures of HICH and other Similar Organizations”)
- a. Most other councils consist only of State cabinet-level staff, or have membership that is “appointed” by the Governor (rather than “requested”).
  - b. Most other councils interact with non-state agencies through a committee structure, or as part of a broader coalition.
  - c. DISCUSSION:
    - i. The HICH structure appears to be more inclusive than other interagency councils, which include non-government stakeholders through committees rather than as formal members of the council.
    - ii. It is important that leadership in the HICH come from the executive branch, which is currently represented by the Governor’s Coordinator on Homelessness.
- V. Discuss recommendations and potential legislative proposal
- a. DISCUSSION:
    - i. The PIG discussed the structure of interagency councils in other communities, and reviewed the pros and cons of each model presented.
    - ii. The PIG discussed whether there was a conflict of interest with the Chair of the HICH also serving as staff of the HICH. It was discussed that there was precedent within other state boards/commissions for the chair and staff to be the same person (e.g. Department of Hawaiian Homelands or Board of Land & Natural Resources).
    - iii. The PIG discussed the number of members on the council, and there was general agreement that additional members should not be added to the council at this time. However, there was agreement that the HICH should explore a committee structure to engage a broader range of stakeholders.
    - iv. The PIG discussed the impact of the Sunshine Law on the ability to establish a formal committee structure, and determined that this matter requires further exploration.
    - v. Rep. Jordan noted a concern for stability in the position of the Coordinator and Chair. She noted that homelessness will not go away, and that she has observed many changes in leadership and direction of the HICH over the past few years. Permanent staffing may assist with more stability for the council.
    - vi. If the council determines that staffing must be permanent, Rep. Jordan suggested that thought be given to how staff is selected and established (e.g. civil service or exempt positions), and where staff should be housed.
  - b. RECOMMENDATIONS:
    - i. There is agreement that leadership of the HICH should come from the Governor’s office, which is currently represented by the Governor’s Coordinator on Homelessness.

- ii. There is agreement that the Governor's Coordinator on Homelessness should eventually become a permanent position. However, this will require coordination and planning to ensure appropriate staffing and continuity for the position.
- iii. There is agreement that other interagency councils have been able to effectively engage the public and a diverse group of stakeholders through an organized committee structure.
- iv. Further discussion and exploration is needed on the following matters:
  - 1. Impact of Sunshine Law on the HICH's ability to establish a formal committee structure.
  - 2. Structure and organizational placement of the Coordinator and staff if these positions become permanently established.
- v. The HICH should further explore the issues identified above to explore the best way to support permanent staffing and engagement of a diverse mix of stakeholders (both public and private).

VI. Adjournment. 12:10pm



Hawaii Interagency Council on Homelessness (HICH)  
Permitted Interaction Group (PIG), pursuant to HRS 92-2.5,

September 29, 2016  
3:00 p.m. – 4:00 p.m.  
Hawaii State Capitol, Room 415

Present: Scott Morishige (HICH Chair); Eddie Mersereau (Dept. of Health); Jennifer Stasch (Partners in Care); Maude Cummings (Bridging the Gap); Tamah-Lani Noh (Staff)

Absent: Judy Mohr-Peterson (Department of Human Services)

- I. Introductions – *The meeting convened at 3:02 p.m.*
  - a. Each member provided a brief introduction with their name and title.
  - b. Tamah-Lani Noh introduced herself as staff to the interagency council, and as recorder of minutes for this meeting.
- II. Purpose of permitted interaction group (PIG)
  - a. To review and develop a sustainability plan for the Hawaii Pathways Project, and make recommendations to the full council for its next regular meeting on October 17, 2016.
  - b. As background, the Chair shared a status update of the Hawaii Pathways Project with the PIG members.
- III. Discussion regarding the Hawaii Pathways Project
  - a. Overview of clients enrolled in Pathways
    - i. PIG members discussed the number of clients housed, and the number of clients who were not yet housed but were still receiving case management services.
    - ii. Members agreed it is important to look at transition plans for both sets of clients.
  - b. Transition plan for housed clients
    - i. ADAD staff (Ray Ibarra) had a meeting with the providers – Helping Hands Hawaii and Catholic Charities Hawaii – to transition existing Pathways clients.
    - ii. The transition plan involves linkages to community based services, and leveraging/billing third party providers.
    - iii. The existing provider will identify high needs clients who may require additional support.
  - c. Transition plan for unsheltered clients
    - i. Unsheltered clients will need to be matched up with a housing voucher, and there are not sufficient commitments to ensure vouchers for all unsheltered clients.

- ii. The group discussed the commitments that had been made previously for the initial CABHI grant for Pathways, and that commitments had come from PIC and BTG CoC permanent housing program (formerly known as Shelter Plus Care).
      - iii. The group discussed sharing the VI-SPDAT scores of unsheltered homeless clients with PIC, and assign them with CoC vouchers.
      - iv. It was also suggested that the group approach the City & County Housing First program to see if vouchers may be allocated for some of the unsheltered Pathways clients.
    - d. Long-term plan for sustainability
      - i. State has been receiving technical assistance through the Center Medicaid and Medicare Innovation's Innovation Accelerator Program (IAP).
      - ii. As a result of the IAP technical assistance, Med-QUEST Division is working on amendments to the state's 1115 waiver to enhance tenancy supports for the chronically homeless population.
- IV. Supporting similar efforts on the neighbor islands.
  - a. Are there current examples of Permanent Supportive Housing (PSH) efforts in the other counties?
    - i. Maui – Maude gave an example of site-based PSH through her agency.
    - ii. Hawaii – The County of Hawaii has a PSH project in Kona that will be completed by end of October.
  - b. How can these efforts on the other islands be supported and sustained?
    - i. Share information regarding planning around Medicaid waiver and tenancy supports.
    - ii. Increase communication/dialogue among providers statewide.
- V. Recommendations for Sustainability of Hawaii Pathways Project
  - a. Implement transition plan for housed Pathways clients
  - b. Work together with the CoCs to identify housing resources for unsheltered Pathways clients
  - c. Continue efforts regarding Medicaid waiver and tenancy supports for the chronically homeless population
  - d. On a policy level, explore opportunities for a landlord mitigation fund, etc.
  - e. Develop a plan to increase training opportunities for case managers that specifically address tenancy support services (e.g. mental health, substance abuse, housing, employment, etc.)
- III. Adjournment. 4:10pm



## PRESSING THE LEVERS OF CHANGE

### Hawai'i State Framework to Address Homelessness

The State's framework to address homelessness is based upon the 'Ohana Nui approach, the Department of Human Services and the Department of Health's multigenerational approach that invests early and concurrently in children and families to improve health, education, employment, and other outcomes. 'Ohana Nui is integrated into State programs, policies, and philosophies to ensure we address the root causes, or *social determinants of health*, which include healthcare, education, safety, living/work environments, and housing. Concurrently and in alignment with 'Ohana Nui, the State strategically presses on three levers to address homelessness: *Affordable Housing, Health & Human Services, and Public Safety*.

#### Affordable Housing

Build more permanent housing and maximize the use of rental subsidies and vouchers to better utilize existing inventory.

#### Health & Human Services

Implement data-driven and evidence-based services that emphasize permanent housing placement.

#### Public Safety

Maintain safety in public spaces for all members of the community. When unsheltered persons are encountered, ensure they are quickly connected to housing and human services.

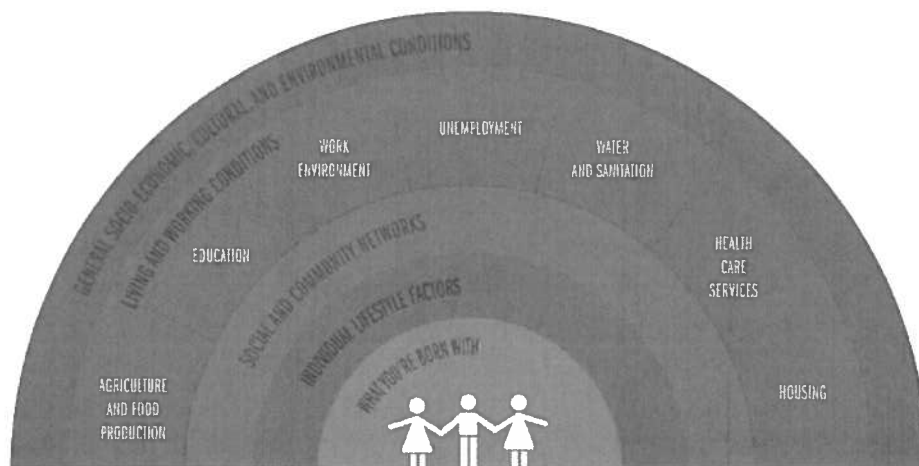
#### GOAL: A "HOUSING FIRST" SYSTEM BY 2020

To implement Housing First on a system-wide scale, Hawai'i aims to reach Functional Zero, which is defined as a point where Hawai'i has:

- Sufficient housing for all homeless individuals; and
- Appropriate services to transition individuals to permanent housing, regardless of their levels of need.

### 'OHANA NUI: ADDRESSING THE SOCIAL DETERMINANTS OF HEALTH

Implementing a Housing First system – so that children do not grow up in homelessness – addresses the social determinants of health and improves outcomes not only for the current generation, but for those to come. The greatest return on investment will be in children ages zero to five years because research shows that living in toxic stress situations impact early childhood brain development, and health throughout the lifespan.



## \$12M LEGISLATIVE APPROPRIATION: ACCELERATING STATE IMPACT ON HOMELESSNESS

The State Legislature provided an appropriation of \$12M over the existing base budget to address homelessness statewide. The framework will guide the State's allocation of this funding as illustrated below:



### Data & Infrastructure (\$675K)

- Build data capacity for evaluation and outcome monitoring.
- Invest in repair and maintenance for state-owned shelters.



### Affordable Housing

- Governor Ige is committed to a goal of 10,000 new housing units by 2020.
- The Rent Supplement program provides shallow subsidies for homeless households.
- Landlord summits have been convened statewide to incentivize use of existing inventory.



### Health & Human Services (\$9.40M)

- Increase funding for homeless outreach.
- Expand Housing First and Rapid Re-Housing programs statewide.
- Continue to invest in evidence-based practices.



### Public Safety (\$1.925M)

- Provide funding to address encampments on State lands and to keep public spaces safe.
- Ensure property storage and access to housing services for unsheltered persons.

## MEASURING IMPACT: CLEAR AND MEASURABLE OBJECTIVES FOR EACH LEVER OF CHANGE

	Affordable Housing	Health & Human Services	Public Safety
<b>Short term (Now)</b>	Maximize the use of rental subsidies by convening landlord summits in every county and recruiting landlord participation.	Issue a new RFP for state homeless contracts, which are coordinated, performance-based, and focused on permanent housing.	Implement statewide policy to address homeless encampments on state lands.
<b>Medium term (2018)</b>	Streamline housing development by aligning rules and processes among state housing agencies.	Maximize efficiency by utilizing Medicaid and other funding streams for permanent supportive housing.	Divert homeless persons from the criminal justice system.
<b>Long term (2020)</b>	Build 10,000 new housing units by 2020.	Reduce the number of unsheltered people to functional zero by 2020.	Reduce to functional zero the number of encampments on state lands by 2020.

The full state plan aligns with Governor Ige's vision for Hawai'i and builds on the work done by many individuals from government, nonprofit organizations, and the private sector. By incorporating 'Ohana Nui into the framework, the plan addresses Governor Ige's priorities: investing in families; improving government efficiencies; ensuring that the community comes first; and bringing aloha to everything we do. To learn more, contact the Governor's Office on Homelessness at (808) 586-0193 or by e-mail at [gov.homelessness@hawaii.gov](mailto:gov.homelessness@hawaii.gov).

# Coordinated Entry

Hawaii Interagency Council on Homelessness

October 17, 2016



HomeBase/The Center for Common

Concerns

Legal and Technical Assistance | Policy | Advocacy |  
Planning

870 Market St., Suite 1228 | San Francisco, CA 94102

# Our Organization

---



**HomeBase** is a San Francisco-based nonprofit public interest law firm that provides legal and technical assistance. We work on the local, state, and national level to support communities in implementing responses to homelessness.

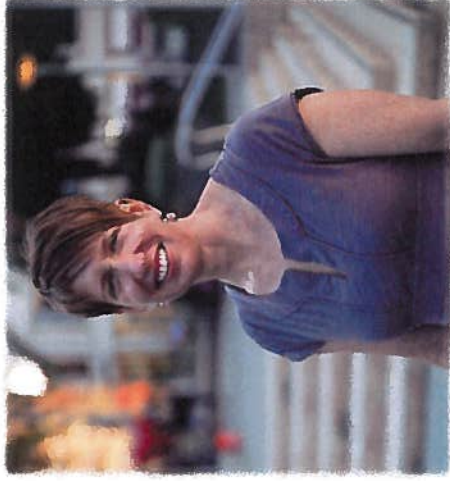


HomeBase/The Center for Common  
Concerns  
Legal and Technical Assistance | Policy | Advocacy |  
Planning  
870 Market St. | Suite 1228 | San Francisco, CA 94102



# Our People

---



**Piper Ehlen**  
Managing Director – Federal  
Programs



**Matt Olsson**  
Staff Attorney



**Mary McGrail**  
Policy Analyst



HomeBase/The Center for Common  
Concerns  
Legal and Technical Assistance | Policy | Advocacy |  
Planning

870 Market St., Suite 1228 | San Francisco, CA 94102

# Our Goals for Today

---

- **Overview of Coordinated Entry**
- **Progress in Hawaii**
- **Next Steps**



**HomeBase/The Center for Common  
Concerns**  
Legal and Technical Assistance | Policy | Advocacy |  
Planning  
870 Market St. | Suite 1228 | San Francisco, CA 94102

# This is NOT Just Starting in Hawaii

---

- Several TA providers have been involved in helping specific population groups
- Service providers, by and large, will not find this discussion/work new



# Building off Current Efforts: PLC

---

- Received assistance from Community Solutions to set up a By Name List (BNL) that is being used (focus: veterans)
- Made decision to use VI SPDAT for assessment tool
- Has completed VI SPDATs on homeless veterans and chronically homeless
- Is migrating VI SPDAT scores into HMIS
- Has been using case conferencing to place high-need households into housing
- PHOCUSED has some funds to assist with CES



# Building off Current Efforts: BTG

---

- HUD CoC planning grant and ESG funds being used to build out CES
- County governments in each county will be doing case conferencing for By Name List



# TA to Assist in the Process

---

- Technical Assistance Collaborative (TAC): Direct assistance to BTG, funded by HUD
- HomeBase: Direct assistance to PIC, funded by HUD
- OrgCode: Focus on Family CES , funded by HCF
- ICF (Chris Pitcher): CES connection to HMIS, funded by HUD
- All partners in communication with each other



# Questions?

---



HomeBase/The Center for Common  
Concerns  
Legal and Technical Assistance | Policy | Advocacy |  
Planning  
870 Market St. | Suite 1228 | San Francisco, CA 94102



# Thank You!

## Wrap-Up

HomeBase/The Center for Common

Concerns

Legal and Technical Assistance | Policy | Advocacy |  
Planning

870 Market St. | Suite 1228 | San Francisco, CA 94102



# Contact Us

---



**Piper Ehlen** | Managing Director – Federal Programs  
[piper@homebaseccc.org](mailto:piper@homebaseccc.org)



**Matt Olsson** | Staff Attorney  
[matt@homebaseccc.org](mailto:matt@homebaseccc.org)



**Mary McGrail** | Policy Analyst  
[mary@homebaseccc.org](mailto:mary@homebaseccc.org)



HomeBase/The Center for Common

Concerns

Legal and Technical Assistance | Policy | Advocacy | Planning

870 Market St. | Suite 1228 | San Francisco, CA 94102



No  
Place  
Like  
Home

child deserves to be homeless.  
matters. Children matter. We'd  
you to help our efforts to end  
lessness in Hawaii.





**MISSION:** Building new lives for Hawaii's individuals and families experiencing homelessness through housing and community outreach.

HomeAid Hawaii is a **non-profit** provider of housing for individuals, families, and youth experiencing homelessness in Hawaii. We **build** and **renovate** shelters, facilities, and housing options owned, operated, or managed by qualifying local non-profit service providers.

HomeAid Hawaii works with local building and development industries to give back to our communities by providing in-kind and discounted materials, supplies, and labor for approved project applications. Through this model, HomeAid



Hawaii reduces the construction cost for the non-profit operator of the program or facility. HomeAid Hawaii also provides support through community outreach events including drives, programs, and partnerships.

## WHO DO WE HELP?

In Hawaii, we have individuals, families, and youth who experience transitional, episodic, and chronic homelessness. Generational homelessness has grown and communities are seeing keiki being born into homelessness. We serve each of these populations. Qualifying non-profit providers can apply for assistance.

- According to the 2015 point-in-time count for homelessness in Hawaii, there are 7,620 individuals, families, and children experiencing homelessness.
- Approximately 691 are veterans.
- Approximately 1,700 have a serious mental illness, the vast majority of whom are unsheltered.
- Approximately 1,400 have a substance use disorder, the vast majority of whom are unsheltered.
- At least 400 of the 7,620 individuals experiencing homelessness are victims of domestic violence.



## CORPORATE PARTNERS, BUILDERS CAPTAINS, AND VENDORS



- A&B Properties, Inc.\*
- BIA Hawaii\*
- Brookfield Homes Hawaii\*
- Castle & Cooke Homes Hawaii\*
- EAH Housing\*
- First Hawaiian Bank\*
- Gentry Homes\*
- Howard Hughes Corporation\*
- Ward Village Foundation\*
- OliverMcMillan\*
- Stanford Carr Development\*
- Commercial Plumbing Island Flooring JBL
- M. Watanabe Electrical
- Ohana Building Supply
- Servco, Inc.\*
- Tru-Door
- Communications Pacific
- HonBlue
- Zoombls Pro

\*Founding donor partner

## BOARD OF DIRECTORS AND STAFF

- PRESIDENT Dave Shiph**, Executive Vice President Hawaii, Howard Hughes Corporation
- VICE-PRESIDENT Kevin Carney**, Vice President Hawaii, EAH Housing
- TREASURER Ralph Mesick**, Executive Vice President, First Hawaiian Bank
- SECRETARY Karin Holma**, Managing Partner, Bays Lung Rose & Holma
- Alan Arakawa**, Senior Vice President, Alexander & Baldwin Properties Inc.
- Bob Brant**, President and Chief Executive Officer, Gentry Homes
- Stanford Carr**, Chief Executive Officer, Stanford Carr Development
- Carlie Goraspe**, Director of Residential Marketing Hawaii, Howard Hughes Corporation
- Mich Imataka**, Managing Principal, Imataka Asalo
- Alan Ong**, Hawaii Regional Manager, OliverMcMillan
- David Pleisch III**, Vice President, Title Guaranty
- Jeff Prostar**, President, Brookfield Homes Hawaii
- Gladys Quijila-Marrone**, Chief Executive Officer, BIA-Hawaii
- Harry Saunders**, President, Castle & Cooke Hawaii, Inc.
- Aline Strickland**, President, Fidelity National Title & Escrow of Hawaii
- Jon Whittington**, President, Compass Home Loans
- Lucien Wong**, President, Lucien Wong & Associates

### Executive Director

Nani Medeiros (808) 497-1106 nmedeiros@homeaid.org

# Highlights of Hawaii Interagency Council on Homelessness Staff Activities

## *Monthly Report for September and October 2016*

This report summarizes highlights of Hawaii Interagency Council on Homelessness (HICH) staff activities and publications for the months of September and October 2016. Please feel free to share any of this information with your agency leadership and colleagues. For more information, please contact Tamah-Lani Noh, Community Engagement Specialist, at [tamah-lani.sk.noh@hawaii.gov](mailto:tamah-lani.sk.noh@hawaii.gov) or (808) 208-5355.

### Reports and Plans

The following two executive summaries of state efforts to address homelessness and affordable housing were uploaded to the website for the [Office of the Governor](#):

- [Executive Summary on Homelessness – State Framework to Address Homelessness](#), describes the framework to respond to homelessness, including a focus on affordable housing, health and human services, and public safety. Provides a brief summary of plans to allocate the Legislature's appropriation of \$12 million to address homelessness in State Fiscal Year 2016-2017.
- [Executive Summary on Housing – State Housing Strategy](#), describes the plan to address the state's affordable housing shortage. The goals of the strategy are to build homes that people can afford, including rentals, to address the needs of those entering the workforce; renovate public housing facilities; and on O'ahu to identify state lands near transit stations for housing, employment centers, daycare, senior centers, and community facilities.

### Update on the Coordinated Statewide Homeless Initiative (CSHI)

Through a contract with [Aloha United Way](#), the [Coordinated Statewide Homeless Initiative](#) continues to provide assistance to homeless and at-risk households throughout the state. Weekly updates are provided online. As of October 7, 2016:

- **776 households** received financial assistance.
  - **450 households with minor children (61%)**
- **2,501 persons** were served, including:
  - **1,324 adults** served (53%)
  - **1,177 children** served (47%)
- **558 at-risk households** served (72%)
- **218 homeless households** served (28%)
- **2,220 agency referrals** made by the 2-1-1 call center
- **\$1,684,407** in financial assistance disbursed, which averages to:
  - **\$674.49** per person served

### News Releases Related to Homelessness and Housing

The HICH staff were involved with the following news releases in the months of July and August 2016:

- [Governor Ige announces completion of the Family Assessment Center](#) – Governor David Ige announced that more than 400 homeless persons will be served over the next two years through the state's new Family Assessment Center (FAC). The FAC is the converted maintenance shed

adjacent to Kaka`ako Waterfront Park. It will temporarily house homeless families while they are being connected to services and long-term housing by Catholic Charities Hawaii.

### **Community Meetings and Conferences Attended**

The Governor's Coordinator on Homelessness and staff participated in the following meetings over the past two months:

- **Meeting with Partners in Care and homeless service providers regarding the new Family Assessment Center (September 14, 2016)** – Staff organized meetings and walking tours of the new Family Assessment Center with homeless service providers and other members of Partners in Care. The walk through meetings highlighted the features of the new center, and included discussions regarding opportunities for collaboration among providers.
- **The Salvation Army CEO Sleepout – Roundtable discussion on homelessness (September 16, 2016)**– The Governor's Coordinator on Homelessness participated, together with Aloha United Way CEO Cindy Adams, in a roundtable discussion regarding government and nonprofit partnerships related to homelessness. The goal of the event was to provide a better understanding of homelessness and show participants opportunities to become part of an effective, long-term solution.
- **25 Cities / Zero:2016 Sustainability Review (September 19-20, 2016)** – Staff participated in this event facilitated by Community Solutions. This two day event focused on reviewing progress and refining strategies to reduce veteran homelessness on Oahu, as well as a broader discussion to implement a Coordinated Entry System (CES) for all homeless sub-populations. Other participants included members of Partners in Care, V.A. staff, and other community stakeholders.
- **Compassionate Innovation in Addressing Hawaii's Homelessness (September 21, 2016)** – The Governor's Coordinator on Homelessness participated in a panel discussion convened by the Spark M. Matsunaga Institute for Peace and Conflict Resolution. The panel included representatives from the City & County of Honolulu, Partners in Care, Alternative Structures International, and Group 70. The event was in commemoration of the International Day of Peace and Constitution Day.
- **Waianae Housing Resource Fair (September 23, 2016)** – The Governor's Coordinator on Homelessness and staff partnered with the Department of Land & Natural Resources (DLNR) and Leeward Coast service providers to convene a housing resource fair for the homeless encampment located on DLNR property in Waianae. The fair featured nonprofit housing providers, as well as representatives from the DHS BESSD, DVR, and Med-QUEST divisions, and staff from the Hawaii Public Housing Authority. Service providers had 467 requests for assistance from an estimated 150 attendees throughout the day.
- **Hawaii Annual Code Challenge (September 24, 2016)** – The Governor's Coordinator on Homelessness attended the judging ceremonies for the First Annual Hawaii Annual Code Challenge (HACC). The event included participation by contestants working to design an "app" to assist with homeless outreach and referrals. One of the teams working on the homeless "app" was the winner of the event, and the Governor's Coordinator will work together with the state administration to try and implement the winning "app" within state government.



- **Youth Homeless Demonstration Project (YHDP) Notice of Funding Availability (NOFA) meeting with Aloha United Way (September 26, 2016)** – Staff attended a meeting convened by Aloha United Way to discuss a NOFA opportunity for the HUD YHDP. The meeting reviewed Aloha United Way's general approach to the application and included participation from Partners in Care membership, youth serving organizations, and state agencies including Child Welfare Services, the Department of Education, and the Office of Youth Services. The application for the YHDP NOFA is due in November 2016.
- **Meeting with Family Court staff and the Department of the Attorney General Community (September 26, 2016)** – The Governor's Coordinator on Homelessness attended a meeting regarding the Assisted Community Treatment (ACT) order, and the potential application of ACT orders to provide assistance for unsheltered homeless persons with serious and persistent mental illness.
- **Homeless Interagency Communications Team Meeting (September 28, 2016)** – The Governor's Coordinator on Homelessness and staff participated in an interagency communications team meeting convened by the City and County of Honolulu. The group includes participation from the State, City & County of Honolulu, and Partners in Care, and is intended to improve alignment of communication and messaging among multiple entities addressing homelessness in the community.
- **Veterans Stand Down Event (September 30, 2016)** – The Governor's Coordinator on Homelessness and staff participated in the VA's Veteran Stand Down event at McCoy Pavilion. The Stand Down provided a variety of housing and social services for homeless veterans. Staff was involved in the planning committee for the Stand Down. Another Stand Down event is planned for the island of Maui on November 3, 2016 at the Pu'unene Armory.
- **Governor's Community Connection Meeting (October 5, 2016)** – The Governor's Coordinator on Homelessness participated, alongside Governor Ige and other members of the Cabinet, in a town hall meeting with residents of Maui County. The Coordinator discussed issues related to homeless services and affordable housing. Earlier in the day, the Coordinator met with service providers on the island, including The Salvation Army and Maui Economic Opportunity.
- **Waipahu Aloha Clubhouse – Panel on Homelessness (October 6, 2016)** - HICH staff attended a forum conducted by the Hawaii Youth Services Network (HYSN). The forum included participation from youth homeless service providers from all four counties, as well as representatives from Partners in Care and Bridging the Gap, and staff from the Office of Youth Services and Child Welfare Services. Topics discussed included state efforts to address youth homelessness, and opportunities for increased coordination and alignment of resources.
- **Community Meeting with Family Assessment Center and Kakaako Makai stakeholders (October 6, 2016)** – The Governor's Coordinator on Homelessness attended a community stakeholder meeting with staff of the Family Assessment Center, and Kakaako area stakeholders – including the Children's Discovery Center, John A. Burns School of Medicine, Next Step shelter, and the Hawaii Community Development Authority. The purpose of the meeting was to share information about the new FAC with Kakaako area businesses and stakeholder groups.

### **Ongoing Activities**

The Governor's Coordinator on Homelessness and HICH staff continue work in collaboration with State agencies, county staff and legislators to respond to concerns about homeless encampments on public lands. In addition, the staff continue efforts to monitor the execution of the Governor's emergency proclamation to address homelessness, and work together with staff from the Department of Health and Department of Human Services to develop and strengthen housing-focused programs to address homelessness statewide.

For more information, please contact the Governor's Coordinator on Homelessness and HICH staff at **(808) 586-0193** or by e-mail at [gov.homelessness@hawaii.gov](mailto:gov.homelessness@hawaii.gov).

# Written Updates to the Hawaii Interagency Council on Homelessness

October 17, 2016 – 10:00 a.m. to 12:00 p.m.

(Reports consolidated by the Office on Homelessness)

## Department of Human Services (DHS) Update

*(Please refer to attached written update from DHS)*

### DHS – Homeless Programs Office (HPO)

As requested please see HPO summary of key points and highlights below:

1. HPO continues to operate with 8 staff members.
2. HPO Program Administrator position has been filled by Harold Brackeen III.
3. HPO continues to have 3 vacant positions; 1 Program Specialist V and 2 Program Specialists IV
  - a. HPO currently working to hire to fill vacancies
4. Rehabilitation and renovations of the Kakaako Shed for the Family Assessment Center has been completed. Blessing took place on September 16, 2016. Catholic Charities Hawaii has been contracted to provide services which started the week of September 26, 2016.
5. HPO completed and posted RFI's on September 8, 2016. Deadline for written responses was on September 16, 2016.
6. HPO is working on the following RFP's to be posted in the next 3 months:
  - a. State Homeless Shelter Program
  - b. State Homeless Outreach Program
  - c. State Homeless Emergency Grants (SHEG) Program
  - d. State Housing Placement Program (HPP)
  - e. State Rapid Re-Housing Program (RRH)
  - f. State Housing First Program Oahu
  - g. State Housing First Program Neighbor Islands
7. HPO in the process of revising Admin Rules to align with RFP's, future contract services, and SB2559
8. HPO continues to work with the U.S. Department of Veteran Affairs (V.A.) regarding HUD VASH program and data collection in HMIS

## Department of Health

*(Please refer to attached written updates – Alcohol and Drug Abuse Division, and Adult Mental Health Division)*

## Department of Public Safety

The department has been working steadily to improve the process in which inmates are transitioned from incarceration. This work specifically includes:

- Establishing a formal Re-Entry Coordination Office (RCO)
  - Filling of the RCO Administrator's position-currently in recruitment
  - 3 of 3 Corrections Program Specialist positions finally filled.
    - Victim Services & Risk Assessment; Training and Planning Positions
- Revitalizing PSD's Comprehensive Re-Entry Plan

- Establishing a Re-entry Plan for all offenders
- Currently working with DOT and the County of Honolulu on a process for offenders obtain State identifications
- Continuance of staff working with offenders and networking agencies in obtaining of identifying documents such as birth certificates and social security cards (Department working with Social Security Administration on MOA).
- Evaluation of currently furlough processes
- Continued research, development and implementation of evidence-based programs
- Evaluation of current programs and performance measures
- Streamlining access to services by partnering with DHS on programs such as Med Quest, SNAP, etc. prior to release of custodies- meetings between our agencies are ongoing. Other agencies are welcomed.
- Partnership with the Judiciary and the City & County's Community Services Office to assist with those existing the criminal justice system to avoid homelessness.

#### **Department of Business, Economic Development, and Tourism**

HCDA's GOAL: Maintain a safe and enjoyable environment for all park users in the Kakaako Makai parks.

Daytime educational campaign:

- HCDA staff and service providers have been passing out flyers to educate the public about park rules.
- Park rules are clearly posted on permanent signs throughout the parks.

Waterfront Park closure:

- Numerous exposed wires were found in vandalized park light fixtures. Extension cords were being run to tents in the park. This constituted an electrical hazard for anyone in the park after dark when the lines are energized. HCDA cut power to the lights and closed the park at sundown 6 p.m. nightly.
- Enforcement of the 6 p.m. closure for homeless is being coordinated and will start soon.

Gateway Park Closure:

- Mauka and Makai Gateway Parks have been closed since July 5.
- The maintenance closure continues to allow our landscaper to complete all necessary repairs.
  - o Irrigation repairs were made and coconut tree trimming is finished
  - o The City & County donated fertilizer, which has been spread in both Gateway Parks. Grass has regrown and parks look great with no brown patches.

On a longer timeline, HHFDC is working with HPHA and the HCDA on increasing the supply of affordable housing state-wide.

#### **Department of Hawaiian Home Lands**

At DHHL, our mission is to place beneficiaries into homes within Hawaiian Homestead communities throughout the State of Hawai'i. DHHL is continuing to focus on the development of permanent affordable housing for beneficiaries.

For those beneficiaries facing financial arrears, and are in threat of losing their homes on Hawaiian home lands, DHHL created the HALE Program, which aids beneficiaries with financial literacy services, homebuyer education classes, foreclosure prevention management, and one-on-one counseling.

DHHL is also exploring rental housing in La'i 'Opua on Hawaii island, and Waimanalo for Kupuna. DHHL will be awarding 45 lots in Waimanalo.

#### **Department of Defense**

The department reports the following updates:

1. **Progress since last report:** Homeless within the State Department of Defense.
  1. Hawaii Army National Guard reported two homeless family (increase of one).
  2. Hawaii Air National Guard reported one homeless families (increase of one).
  3. Youth Challenge Academy reported one homeless family.
  4. State Office of Veteran Services reported contacting 14 homeless families
2. **Plans:** Continue to identify and support homeless concerns in the State Department of Defense.
  1. Hawaii Office of Veterans' Services to support homeless programs related to veterans.
    1. The State Office of Veterans Services (OVS) supports homeless Veterans by accomplishing outreach visits and by co-sponsoring Homeless Stand Down Events.
      1. Planning for 3 Nov 16 Maui Veteran Stand Down 2016 at the Hawaii Army National Guard's Pu'unene Armory.
    2. Also supported Veteran jobs resourcing as an Hawaii Hires Heroes (H3) advocate, tie into the Veterans Treatment Court as a facilitator, and we're part of the State's No Wrong Door Program as one of the major doors for Veterans.
  2. Coordinate with youth outreach programs to identify homeless 16-18 year olds that would benefit from the Hawaii National Guard Youth Challenge Program.
  3. Participate in Homeless Veterans Task Force meetings.
3. **Problems:** No concerns at this time.

#### **Department of the Attorney General**

The Department of the Attorney General continues to provide the state administration with legal counsel on various matters.

#### **Department of Education**

The Department of Education reports that implementation of the legislative updates to McKinney Vento Act, per ESSA, have begun, including:

- sharing general data on homeless students and DOE's MVA program on DOE website
- increasing collaboration with community stakeholders
- expanding definition to include preschool children (SY 2017-18)
- increasing focus on unaccompanied youth and support through educational transitions
- increasing collaboration with family serving agencies around identification and support

#### **City & County of Honolulu**

The City & County of Honolulu continues its commitment to shelter and house members in our community that experience homelessness through:

1. The City is committed to the housing first model. The Housing First Program Increment 1 has a retention rate of 97%. Housing First Program Increment 2 will be released soon, and will serve and house an addition 100 households.
2. Mayors Challenge to End Veteran Homelessness. From January 2015 to July 2016, the collaborative effort between the City, HUD, HPHA, VA, Partners in Care, and Landlords, we have housed 809 *(new update for October numbers will be available on day of HICH meeting)* veterans in permanent housing! We continue to outreach, connect, and serve this community. The Mayor is committed to meet this Challenge.
3. Heroes Housing Heroes Landlord Event is scheduled for 10/11 at Mission Memorial Auditorium where the Mayor will be recognizing landlords for their commitment to house our homeless veterans.
4. Hale Mauliola at Sand Island – has housed over 90 individuals who have experienced homelessness
5. City continues to work on developments that specifically meet the need of households experiencing homelessness
  - a. Halona Road in Waianae will be opening up late October/early November
  - b. Winston Hale MicroUnits continues in its development process. Plans to open will be detailed in the meeting
  - c. Hassinger Project (Makiki) – will be working with a community advising committee to better design the property
  - d. Farrington Highway continues in its planning process
  - e. Kuwili Property – continues in its design process, with plans to open in 2017. The City and State continue with discussions to find ways to partner for services

#### **Hawaii State Senate**

*(Please refer to attached written update from Senator Suzanne Chun Oakland)*

#### **Partners in Care – Oahu Continuum of Care**

*(Please refer to attached written updates from Partners in Care – Overall & Chronic Dashboard, and Save the Date for Coordinated Entry System technical assistance training)*

#### **County of Hawaii**

The County of Hawaii continues its efforts to address homelessness, which include the following:



1. Hale Kikaha at The Friendly Place (Micro Units) is on schedule for completion at the end of October. The Office of Housing and Community Development has received 100 applicants and has begun the selection process.
2. Collaborating with the Faith-Based community to hold Faith-Based Summits in East and West Hawaii. The East Hawaii Summit is scheduled for October 5; to date over 100 people have registered. The West Hawaii Summit scheduled for early December.
3. On September 16 representatives from homeless community, government, social services, and business met to update our island wide strategic plan.

#### **County of Maui**

The County of Maui shares the following written updates:

- Maui County Council recently reviewed a proposed ordinance entitled Prohibitions Relating to Lying Down on Public Sidewalks. No action taken. Next meeting to review this particular bill along with 3 others (Prohibitions Relating to the Taking or Abandonment of Shopping Carts, Prohibition Relating to Defecating or Urinating in or on Public Places, Liquor in Municipal Parking Lots and Other Public Areas) is scheduled for October 31.
- Maui County Parks & Recreation Department has temporarily closed its campsite at Kanaha Beach Park. This campsite was predominately used by homeless individuals and families. Outreach to the users resulted in a few moving to shelter, but most have chosen to stay homeless. Some of whom have moved their campsites out onto the street fronting the park. Future plans include a road closure which will block off vehicular access to the area - at which time, these homeless individuals will be forced to relocate.
- Maui County Council has approved 2 homeless positions to be housed in a new Homeless Division under the Department of Housing & Human Concerns. Position descriptions and class specifications are currently under review by Department of Personnel Services.
- The Department of Housing & Human Concerns received additional grant funding for homeless programs. These funds are being allocated for additional outreach and cleanup efforts.

DAVID Y. IGE  
GOVERNOR



PANKAJ BHANOT  
DIRECTOR

BRIDGET HOLTHUS  
DEPUTY DIRECTOR

STATE OF HAWAII  
**DEPARTMENT OF HUMAN SERVICES**

P. O. Box 339  
Honolulu, Hawai'i 96809-0339

Hawaii Interagency Council on  
Homelessness  
Program Updates  
October 17, 2016

On September 1, 2016, the Department of Human Services (DHS) transitioned departmental leadership. We appreciate the vision and leadership of Director Rachael Wong. The Governor appointed former Deputy Director Pankaj Bhanot to serve as Director, and Bridget Palmer Holthus to serve as Deputy Director. Also joining the staff of the Director's office is Special Assistant Lila King, Community Development Director Kimberly Miyazawa Frank, and Policy Director Mark Forman.

Program updates:

1. Mark Forman will provide additional support to the Benefit, Employment & Support Services Division (BESSD)-Homeless Programs Office (HPO). Mr. Forman will serve as the point of contact for the HPO and will facilitate continuing work with the Governor's Coordinator on Homelessness, other public officials, service providers and community members. Mr. Forman may be reached at (808)778-5587, [mforman@dhs.hawaii.gov](mailto:mforman@dhs.hawaii.gov).
2. Operations at the Kaka'ako Family Assessment Center (Center) officially began on September 26, 2016. Once services begin, the facility is expected to serve over 400 individuals in two years. The Center will serve as an assessment and navigation center –quickly moving families from streets to homes. Under the authority of the Governor's Emergency Proclamation, Catholic Charities of Hawaii was selected as the Center's service provider. Multiple public-private partners collaborated to bring the Center to fruition.
3. BESSD-HPO will post RFPs for shelter operations in mid-October.

4. Division of Vocational Rehabilitation provides services to homeless individuals with disabilities who are interested in looking for work. For more information contact Susan Foard, [SFoard@dhs.hawaii.gov](mailto:SFoard@dhs.hawaii.gov).
5. Social Services Division, Child Welfare Services (CWS) Branch:
  - a. CWS continues to work on a Memorandum Of Understanding (MOU) with the City and County of Honolulu, Department of Community Services (DCS), to revise an existing MOU expanding Section 8 voucher use from young adults to some families identified in the Child Welfare System who would qualify for a Family Unification Project voucher.
  - b. CWS, Honolulu Police Department and the State Sheriffs have enhanced the protocol for responding to homeless youth who are in abuse or neglect situations. This was necessitated out of a new policy from the Office of Juvenile Justice which states that children can no longer be detained in a facility where adult defendants are being held. An agreement was reached to have workers and police meet at a mutually agreed upon location in order to exchange supervision of the youth and CWS will respond within two (2) hours which is our timeframe for crisis response in abuse and neglect reports. We anticipate this change will cut down on response time, freeing up the officers to move on to other calls. For more information, please contact Kathryn Boyer, [kboyer@dhs.hawaii.gov](mailto:kboyer@dhs.hawaii.gov).

# HAWAII PATHWAYS PROJECT (HPP)

September 26, 2016

## CURRENT PROJECT STATUS

### 1. Transition Actions



- No Cost Extension awarded: Notice of Award received September 9/14/2016. Extension dates: 9/30/2016-9/29/2017, Project Service Team funded until March 29, 2017. Administration and coordinator to continue until September 29, 2017. Budget \$971,389
- Working with HICH regarding new scope of services for Helping Hands Hawaii(HHH), towards contract modification to take effect during extension.
- Catholic Charities staff has been modified. Rona Fukumoto will continue to work with HHH in transitioning clients to non-HPP resources and establish new staff for vocational and housing support.
- Transition plan for HPP clients begins with Medicaid billing for services. The goal is to have providers of Tenancy Support services (housing, employment, behavioral health, substance abuse and other quality of life factors affecting health outcomes) be able to bill Medicaid. HHH is currently in process of renewing their billing license.
- HHH will continue to transition clients toward established non-HPP resources that provide tenancy support services.
- Currently HICH, HPP, MedQuest division (MQD), AMHD, and Hawaii Public Housing Authority (HPHA) are working on multiple facets of the statewide plan for homelessness: -MQD is modifying its 1115 waiver to define Tenancy Support Services and the population they will serve in order for providers to be able to properly bill for such services.
- HPP is also working with HICH and MQD to fill the Policy Consultant position. A scope of services has been generated and reviewed by all stakeholders and will move towards hiring action, projected date: October 15, 2017.
- HHH and HPP Coordinator are working on a technical assistance visit from Dr. Sam Tsembaris, founder of Housing First, Inc. The visit will consist of assistance to HHH service team regarding fidelity, transitioning, and sustainment. Projected time frame is late October. HHH is also coordinating with HICH regarding the visit.
- HPP is no longer enrolling new clients. Currently 140 enrolled: 64 placed in PSH: 60 currently Housed. HPP service team is prioritizing enrollees towards transitioning to non-HPP resources for tenancy Support.
- Primary issue of concern is ownership of the vouchers, will the voucher owners take over ICM of clients when HPP dissolves.



## 2. Permanent Housing



- 64: Total placed
- 60: includes those with **neutral exits** (02-deceased in housing; 01-transitioned to care home)
- 54: Total housed currently
- 04: consumers have been approved for a unit and who have the opportunity to be rehoused. 01-State-pending unit viewings; 02-Steadfast Units approved; 01-HUD 01-lease signed
- 5 newly approved clients. 3 are awaiting lease signing, 1 awaiting HUD/VASH inspection, 1 in beginning of housing search process.

## 3. Vouchers



- 75 vouchers total provided by 7 sources (State, City, Shelter Plus, HUDVASH, U.S. Vets, Gregory House)
- 63 of those have been accounted for, as in a there is a name linked to that voucher
- 13 of the 63 are in the process of housing placement or rapid rehousing
- 12 are in the balance, no name linked to the voucher
- 03 awaiting referral by the VA through HUD VASH program
- 09 awaiting referral by US Vets program
- 73 of the 136 are awaiting a "flexible" housing voucher

September 30, 2016

**Adult Mental Health Division Homelessness Initiatives**

- The Adult Mental Health Division will increase homeless outreach case management in the windward area.
- The AMHD provides Licensed Crisis Residential Services (LCRS) which offers short-term, acute interventions to individuals experiencing or recovering from a psychiatric or behavioral health crisis. This is a structured residential alternative or diversion from psychiatric inpatient hospitalization. LCRS services are for individuals who are experiencing a period of acute stress that significantly impairs the capacity to cope with normal life circumstances. This program provides services which address the psychiatric, psychological, and behavioral health needs of the individual. Serving islands Oahu, Maui, Hawaii
- **The AMHD are also partners of the Medicaid Innovation Accelerator Program (IAP)** This program will bring technical assistance from national experts to help stakeholders in public housing, Medicaid and behavioral health come together and redesign and implement plans to cover gaps in services. The technical assistance ended in September, however the Hawai'i team will continue to meet monthly in efforts to continue the progression of using evidence-based national best practices and improve existing programs like Housing First and supporting wrap-around services.
- The AMHD continues to provide supported housing for 150 consumers statewide.
- The AMHD continues to provide 24 hour, 8-16 hr and semi-independent group homes for 796 consumers statewide.



# Oahu's 2016 Overall Homeless Analysis



**PARTNERS IN CARE**  
OAHU'S CONTINUUM OF CARE

**4,940**

Total number of homeless persons identified in 2016, up from 4,903 in 2015

**44%**

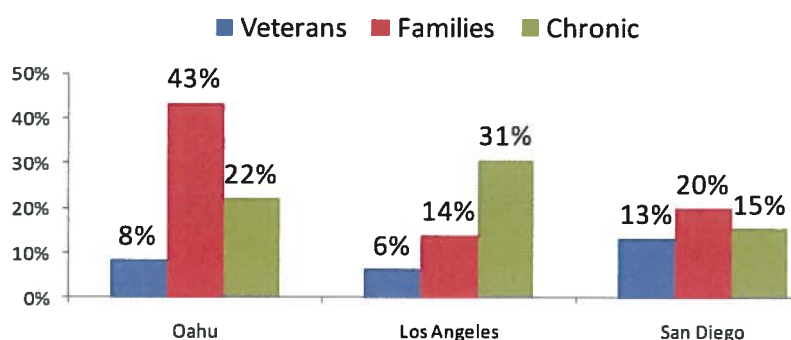
Unsheltered Rate among homeless people, up 14% from the 30% rate in 2012

**83%**

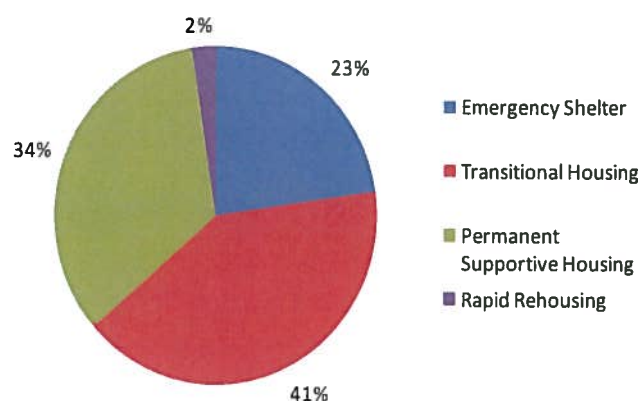
Shelter Utilization Rate of the homeless program beds

## 2016 Homeless Count Figures

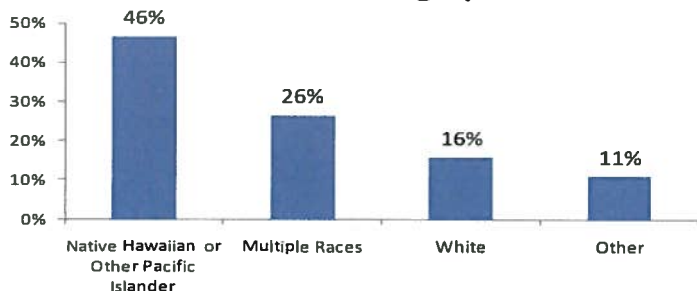
### Homeless Composition Around CoC's



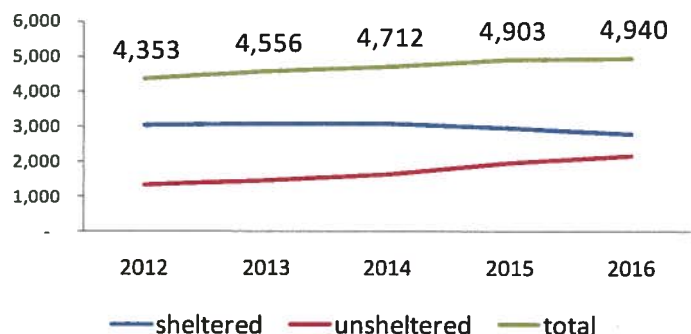
### Housing By Program Type



### Homeless Demographics



### Yearly Homeless Count



### About Partners In Care:

Partners In Care (PIC) is Oahu's Continuum of Care as defined by the HUD Hearth Act. PIC is a coalition of over 30 nonprofit providers, government agencies and other stakeholders whose collective mission is to end homelessness on Oahu.

### Notes:

The majority of data available in this dashboard come from the Point in Time (PIT) count. The PIT count is an annual count of homeless people. It is used as an approach to understanding the state of homelessness on any given night.

Majority of data retrieved from 2016 Point In Time Count Report. The Point in Time (PIT) count is an annual count of homeless people. It is used as an approach to understanding the state of homelessness on any given night. 2016 Housing Inventory Count (HIC) was also used as a data source. Los Angeles information found at: <https://documents.lahsa.org/Planning/homelesscount/2016/factsheet/2016-HC-Results.pdf>; San Diego information found at: <http://www.rtfhsd.org/wp/wp-content/uploads/2016/06/Comprehensive-Report-2016-final.pdf>

# Oahu's 2016 Chronically Homeless Analysis



**PARTNERS IN CARE**  
OAHU'S CONTINUUM OF CARE

## Who Are The Chronically Homeless?

Chronic Homeless must meet 3 criteria:

1. Individual is homeless and lives in a place not meant for human habitation, a safe haven, or emergency shelter AND
2. Individual has been **homeless for at least 1 year** or on 4 separate occasions in the last 3 years with those occasions adding up to 12 months AND
3. Individual has a **disability**.

## By The Numbers

**1,090**

Persons on Oahu who meet the chronically homeless definition

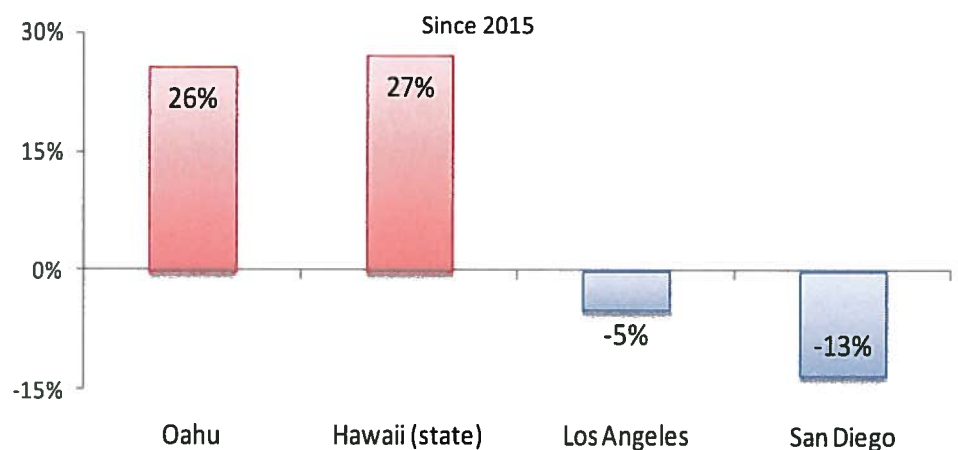
**17% decrease**

In Chronically Homeless Veterans and Their Families since 2015

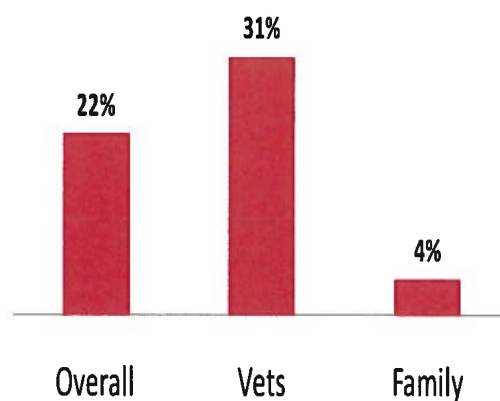
**41%**

Of unsheltered homeless are chronically homeless individuals

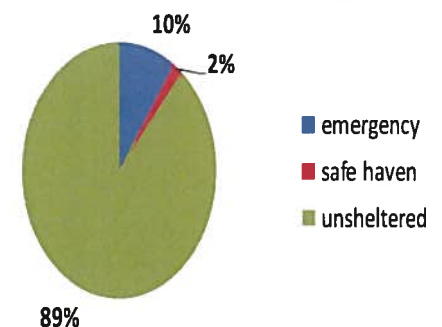
## Chronic Homeless % Change



## Chronic Rate Among Subpopulations



## Chronic Homeless by Shelter Type





## PARTNERS IN CARE

### Oahu Continuum of Care

*Partners in Care is a coalition of Oahu's homeless service providers, government representatives and community stakeholders working together in partnership to end homelessness.*

## SAVE THE DATE!

### HUD Technical Assistance Training with HomeBase

#### *Community Planning for Coordinated Entry Process Assisting Homeless Individuals and Families*

Tuesday, October 18, 2016

8:30 a.m. to 3:00 p.m.

Aiea Korean United Methodist Church

99-550 Kulawea St., Aiea, HI 96701

HomeBase is a San Francisco based, nonprofit public interest law firm dedicated to the social problem of homelessness. HomeBase works on the state and national level to support communities in implementing responses to homelessness while fostering collaboration in addressing the political and economic causes of homelessness.

The training will be facilitated by Piper Ehlen, who manages all of HomeBase's Federal Program activity, including HUD funded TA. Her expertise includes strategic planning processes; program design and implementation; facilitating interagency and inter-jurisdictional coordination efforts; and training on a variety of program and policy issues.

The primary goals for coordinated entry processes are that assistance be allocated as effectively as possible and that it be easily accessible no matter where or how people present. Coordinated entry processes help communities prioritize assistance based on vulnerability and severity of service needs to ensure that people who need assistance the most can receive it in a timely manner. Coordinated entry processes also provide information about service needs and gaps to help communities plan their assistance and identify needed resources.

Join us on Tuesday, October 18, 2016. Stay tuned for a detailed agenda in the coming days!

Please RSVP to Jen Stasch, Director, Partners in Care, [jstasch@auw.org](mailto:jstasch@auw.org) or 543-2282.

PARTNERS IN CARE, c/o Aloha United Way  
200 North Vineyard • Suite 700 • Honolulu, Hawaii 96817 • [www.PartnersinCareOahu.org](http://www.PartnersinCareOahu.org)

Project	Address	City	Island	Managing Agent	Income Targets & Maximum Rents					Number of Units by Size					Units
					30%	40%	50%	55%	60% >60%	0	1	2	3	23	
Anaheka Senior Residences	53-3995 Anaheka Dr.	Kapaa	Hawaii	Hawaii Affordable Properties	3	0	0	0	27	0	0	29	0	0	30
Capt Cook Elderly Hsg Project	82-1040 Kihoa Road	Captain Cook	Hawaii	Day-Lum Rentals	0	0	20	0	0	1	0	21	0	0	21
E Komo Mai	836 Kinohi St.	Hilo	Hawaii	Big Island Housing Foundation	3	0	30	0	11	0	0	35	9	0	45
Haili Elderly	227 Haili Street	Hilo	Hawaii	Cambridge Management Inc.	0	36	0	0	0	0	0	36	0	0	36
Hale Aloha O Puna	Keau District	Keau	Hawaii	Hawaii Public Housing Authority	0	0	30	0	0	0	0	18	20	0	30
Hale Hauoli	45-540 Kaniaka Place	Honokaa	Hawaii	Hawaii Public Housing Authority	0	0	40	0	0	0	24	16	0	0	40
Hale Hoaloa	119 W. Lanikaia Street	Hilo	Hawaii	Cambridge Management, Inc.	0	0	0	0	80	1	0	12	30	39	81
Hale Hookpa	81-1038 Nani Kupuna Place	Kealahou	Hawaii	Hawaii Public Housing Authority	0	0	32	0	0	0	20	12	0	0	32
Hale Olaka	144 Kamana Street	Hilo	Hawaii	Hawaii Public Housing Authority	0	0	50	0	0	0	29	30	0	0	50
Hale Ulu Hoi III (FKA Laukapu Apts)	485 Laukapu St.	Hilo	Hawaii	Day-Lum Rentals	2	0	15	0	0	0	0	18	0	0	18
Harry & Jeanette Weinberg Kea au Elderly	16-184 Pili Mwa Street	Keau	Hawaii	Big Island Housing Foundation	0	0	20	0	0	0	0	18	0	0	20
Hilo Maile Terrace	40 Maile Street	Hilo	Hawaii	Day-Lum Rentals	0	0	0	0	24	0	0	18	6	24	24
Hilo Vail Hala Apartments	120 Puao Street	Hilo	Hawaii	Cirrus AMI											103
Hualalai Elderly	75-256 Hualalai Road	Kailua-Kona	Hawaii	Hawaii Affordable Properties	0	0	29	0	0	0	0	29	0	0	30
Hualalai Elderly Ph 2	75-258 Hualalai Road	Kailua-Kona	Hawaii	Hawaii Affordable Properties	0	0	36	0	0	0	0	36	0	0	36
Hualalai Elderly Ph 3	75-260 Hualalai Road	Kailua-Kona	Hawaii	Hawaii Affordable Properties	0	0	30	0	0	0	0	30	0	0	30
Jack Hall Kona	74-895 Kealahou Street	Kailua-Kona	Hawaii	Bob Tanaka, Inc.	0	0	48	0	0	0	0				48
Ka Hale Kahaui	78-6725 Makolea Street	Kailua-Kona	Hawaii	Hawaii Public Housing Authority	0	0	50	0	0	0	0	8	12	30	50
Kaimahio	74-5060 Kealahou Street	Kailua-Kona	Hawaii	Hawaii Public Housing Authority	0	0	40	0	0	0	0	10	14	16	40
Kamaaina Hale	78-5837 Kuahini Highway	Kailua-Kona	Hawaii	Hawaii Affordable Properties, Inc.	0	0	42	0	0	84	0	0	126	0	126
Kamama Elderly	145 Kamama Street	Hilo	Hawaii	Big Island Housing Foundation	3	0	0	0	0	59	0	62	0	0	62
Kamuela Senior Housing	64-270 Keaka Kea Place	Kamuela	Hawaii	Hawaii Affordable Properties	0	0	31	0	0	0	0	31	0	0	31
Kauale O'Hanalehi	19 Palmsa Street	Hilo	Hawaii	Hawaii Public Housing Authority	0	0	20	0	0	0	0	0	0	20	20
Kauale Ohi I, II, and III	28-2926 Kumula Street	Pepeekeo	Hawaii	AWI Management Co.	0	0	124	0	0	0	0	20	72	32	124
Ke Kumu Ekolu (Ke Kumu at Waikohu)	68-3520 Ke Kumu Place	Waikohu	Hawaii	Hawaii Affordable Properties	0	0	0	0	48	0	0	0	48	0	48
Ke Kumu Ekolu	68-3385 Ke Kumu Place	Waikohu	Hawaii	Hawaii Affordable Properties	0	0	20	0	0	0	0	0	0	20	20
Ke Kumu Elua	68-3367 Ke Kumu Place	Waikohu	Hawaii	Hawaii Public Housing Authority	0	0	26	0	0	0	0	10	16	0	26
Kealahou	74-991 Manawale'a Street	Kailua-Kona	Hawaii	Hawaii Public Housing Authority	0	0	48	0	0	0	0	16	16	16	48
Kinoole Senior Residences	2020 Kinoole Street	Hilo	Hawaii	Hawaii Affordable Properties	0	0	30	0	0	0	0	30	0	0	30
Kulimano Elderly Hsg Proj	28-2947 Kumula Street	Pepeekeo	Hawaii	County of Hawaii	0	0	50	0	0	0	0	3	24	4	50
Lahani	74-984 Manawale'a Street	Kailua-Kona	Hawaii	Hawaii Affordable Properties, Inc.	0	0	0	0	0	200	0	32	145	12	200
Lanaila Homes I	600 Waihoa Street	Hilo	Hawaii	Hawaii Public Housing Authority	0	0	78	0	0	0	0	6	32	40	78
Lanaila Homes II	600 Waihoa Street	Hilo	Hawaii	Hawaii Public Housing Authority	0	0	44	0	0	0	0	0	16	24	44
Lanaila Homes III	600 Waihoa Street	Hilo	Hawaii	Hawaii Public Housing Authority	0	0	20	0	0	0	0	0	0	20	20
Lanaila Homes IV	600 Waihoa Street	Hilo	Hawaii	Hawaii Public Housing Authority	0	0	48	0	0	0	0	2	18	28	48
Lincoln Courtside	400 Kinoole Street	Hilo	Hawaii	Seawind Realty	0	0	0	0	36	0	2	14	20	0	36
Lokahi	Lokahi Circle	Hilo	Hawaii	Hawaii Public Housing Authority	0	0	30	0	0	0	0	14	16	30	30
Lokahi Ka'u	73-4411 Kakaheka Street	Kailua	Hawaii	Indigo Real Estate Svcs., Inc.	17	0	0	0	287	0	90	107	107	0	304
Mohouli Heights Sr. Neighborhood Phase 1	555 Kupuna Pl.	Hilo	Hawaii	Hawaii Affordable Properties, Inc.	3	0	56	0	0	0	0	59	0	0	60
Ma Kahua Hale O Ulu Wini	Hina Lani Street	Kailua	Hawaii	Hope Services Hawaii	0	0	40	0	0	0	0	0	40	0	40
Nani O Puna	15-2914 Kaunale Street	Pahoa	Hawaii	Hawaii Affordable Properties	0	0	32	0	0	0	0	4	16	12	32
Nani Olu	81-1011 Nani Kupuna Place	Kealahou	Hawaii	Hawaii Public Housing Authority	0	0	32	0	0	0	0	32	0	0	32
Noelani I	65-1191 Opelo Road	Kamuela	Hawaii	Hawaii Public Housing Authority	0	0	19	0	0	0	0	7	12	0	19
Noelani II	65-1191 Opelo Road	Kamuela	Hawaii	Hawaii Public Housing Authority	0	0	24	0	0	0	0	0	0	24	24
Ouli Ekahi	62-2600 Ouli Ekahi Pl	Kamuela	Hawaii	Hawaii Affordable Properties	0	0	0	0	33	0	0	0	0	33	33
Pahala	96-1169 Kou Street	Pahala	Hawaii	Hawaii Public Housing Authority	0	0	24	0	0	0	0	16	18	0	24
Pahala Elderly	96-1183 Hoi Street	Pahala	Hawaii	Bob Tanaka, Inc.	0	0	8	0	0	0	0	8	0	0	8
Pemahai Homes	929 Uluani Street	Hilo	Hawaii	Hawaii Public Housing Authority	0	0	20	0	0	0	10	10	0	0	20
Punahale Homes	Lokahi Place	Hilo	Hawaii	Hawaii Public Housing Authority	0	0	30	0	0	0	0	0	30	0	30
Riverside Apartments	333 Ohai St.	Hilo	Hawaii	Big Island Housing Foundation	9	30	33	0	0	0	0	12	54	6	74



Project	Address	City	Island	Managing Agent	Income Targets & Maximum Rents					Number of Units by Size					Units
					30%	40%	50%	55%	60%-60%	0	1	2	23		
Waikohia Gardens	68-1820 Puu Meleha Street	Waikohia	Hawaii	Bob Tanaka Realty	0	0	0	0	24	0	8	16	0	24	
Waimea Elderly Hsg Proj	67-5165 Kamaulua St	Kamuela	Hawaii	Big Island Housing Foundation	0	0	40	0	0	0	0	40	0	40	
Eleete Homes	Ahe Street	Eleete	Kauai	Hawaii Public Housing Authority	0	0	24	0	0	0	0	2	6	16	
Hale Hoolulu	4264 Ala Muku Place	Kilauea	Kauai	Hawaii Public Housing Authority	0	0	12	0	0	0	8	4	0	12	
Hale Hoonanea	4401 Waialo Road	Eleete	Kauai	Hawaii Public Housing Authority	0	0	40	0	0	0	24	16	0	40	
Hale Kupauna	2363 Puu Rd.	Kalahao	Kauai	Hawaii Affordable Properties	0	0	27	0	0	0	0	28	0	28	
Hale Nana Kai O Keea	4850 Kawaihau Road	Kapaa	Kauai	Hawaii Public Housing Authority	0	0	38	0	0	0	20	18	0	38	
Home Nani	Moana & Laau Road	Waimea	Kauai	Hawaii Public Housing Authority	0	0	14	0	0	0	10	4	0	14	
Hui O Hanamululu	Laukaha Street	Hanalei	Kauai	Hawaii Public Housing Authority	0	0	46	0	0	0	0	6	12	28	
Kalahao	Puu Road	Kalahao	Kauai	Hawaii Public Housing Authority	0	0	8	0	0	0	0	0	2	8	
Kalepa Village, Phase 1	4535 Kalepa Circle	Hanalei	Kauai	Hawaii Affordable Properties, Inc.	0	0	0	0	0	0	60	0		60	
Kalepa Village, Phase 2 B	4535 Kalepa Circle	Hanalei	Kauai	Hawaii Affordable Properties, Inc.	0	0	0	0	40	0	0			40	
Kalepa Village, Phase 3	4535 Kalepa Circle	Hanalei	Kauai	Hawaii Affordable Properties, Inc.	0	0	0	0	40	0	0			40	
Kalepa Village, Phase 4	4535 Kalepa Circle	Hanalei	Kauai	Hawaii Affordable Properties, Inc.	0	0	0	0	40	0	0			40	
Kaniko O I Senior (Ika Rice Camp I)	2940 Kaler St. & 4203 Malama St.	Lihue	Kauai	EAH, Inc.	0	0	0	0	59	1	0	38	22	0	
Kapaa	4726 Maui Road	Kapaa	Kauai	Hawaii Public Housing Authority	0	0	36	0	0	0	0	6	8	22	
Kawaihewa-Federal	5230 Paanuu Road	Koloa	Kauai	Hawaii Public Housing Authority	0	0	25	0	0	0	0	0	25	25	
Kawaihewa-State	5220 Paanuu Road	Koloa	Kauai	Hawaii Public Housing Authority	0	0	26	0	0	0	0	6	20	26	
Kekaha Ha'aho	8238 Iwipolena Road	Kekaha	Kauai	Hawaii Public Housing Authority	0	0	78	0	0	0	0	42	12	78	
Kekaha Plantation Elderly Hsg	8215 1 Elepaio Road	Kekaha	Kauai	EAH	0	0	0	0	36	0	0	36	0	36	
Kohala Hale Ohana Apartments	3985 Ohuolu Road	Kohala	Kauai	AWI Management Corp.	4	0	43	0	0	0	0	18	29	48	
Kohala Hale Ohana II	3985 Ohuolu Road	Kohala	Kauai	AWI Management Corp.										18	
Koloana	5-4280 Kuhio Highway	Princeville	Kauai	EAH, Inc.	0	0	0	0	43	1	0	16	16	12	
Lihue Court	4160 Hoala St.	Lihue	Kauai	Mutual Housing Assn. of Hawaii	0	0	0	0	138	35	0	43	118	173	
Lihue Gardens Elderly	3120 Jervess Street	Lihue	Kauai	Mark Development, Inc.	0	0	58	0	0	0	0	58	0	58	
Lihue Theater	3-3194 Kuhio Hwy.	Lihue	Kauai	Hawaii Affordable Properties	0	0	21	0	0	0	0	21	0	20	
Paanuu Village	5200 Paanuu Road	Koloa	Kauai	EAH, Inc.										60	
Paanuu Village II	5164 Paanuu Road	Koloa	Kauai	Hawaii Affordable Properties, Inc.	0	0	2	0	48	0	0	20	20	50	
Shingawau Apartments	3320 Punii Road	Koloa	Kauai	Mark Development, Inc.	0	0	8	0	0	0	0	0	4	8	
Courts at Lanai, The	1119 Lanai Avenue	Lanai City, Lanai	Maui	Castle & Cooke Resorts, LLC	0	0	0	0	48	0	0	38	10	48	
David Malo Circle	Mali Street	Lahaina	Maui	Hawaii Public Housing Authority	0	0	18	0	0	0	0	2	4	12	
Front Street Apartments	2001 Kenuu Street	Lahaina	Maui	Marcus and Associates	0	0	0	0	141	1	16	82	46	142	
Hale Kupauna O Lanai	1144 Lima Avenue	Lanai City, Lanai	Maui	Hale Mahalo, Inc.	0	0	24	0	0	0	0			24	
Hale Mahalo Akahi	300-P W. Wailea Ave	Kahului	Maui	Hale Mahalo	0	0	111	0	0	0	0			111	
Hale Mahalo Eha	1057 Makawao Avenue	Makawao	Maui	Hale Mahalo	0	0	40	0	0	0	0			40	
Hale Mahalo Ehihi, Ph. 1A	64 Ehihi Loop	Kihui	Maui	Hale Mahalo	0	0	0	0	34	0	0	34	0	34	
Hale Mahalo Ehihi, Ph. 1B	56 Ehihi Street	Kihui	Maui	Hale Mahalo	0	0	20	0	0	0	0	20	0	20	
Hale Mahalo Ehihi, Ph. 1I	94 & 105 Ehihi Loop	Kihui	Maui	Hale Mahalo	0	0	0	0	59	0	0	59	0	59	
Hale Mahalo Eiko	717 B Makaha Drive	Wailuku	Maui	Hale Mahalo	0	0	42	0	0	0	0			42	
Hale Mahalo Emma	11 Mahalo Street	Kahului	Maui	Hale Mahalo	0	0	60	0	0	0	0			60	
Hale Mahalo Eono	820 Kelaewa Street	Lahaina	Maui	Hale Mahalo	0	0	30	0	0	0	0	30	0	30	
Hale Mahalo Eono 5	820 Kelaewa Street	Lahaina	Maui	Hale Mahalo	0	0	5	0	0	0	0	5	0	5	
Hale Mahalo Eliua	200-A Hina Avenue	Kahului	Maui	Hale Mahalo	0	0	180	0	0	0	0			180	
Hale Mahalo Eliua	200-A Hina Avenue	Kahului	Maui	MECC	0	0	200	0	0	0	24	0	128	200	
Hale Mahalo Eliua	670 Waiale Road	Wailuku	Maui	MECC	0	0	200	0	0	0	24	0	128	200	
Harry and Jeanette Weinberg Pono Center	62 North Market Street	Wailuku	Maui	Lokahi Pacific	0	0	4	0	0	0	0	4	0	4	
Home Punaheana	290 Koloa Place	Kaunakakai, Mo'orea	Maui	Hale Mahalo	0	0	85	0	0	0	0			85	
Honoowai Kauhale	3500 Lwr Honoapihiani Hwy	Lahaina	Maui	Hawaii Affordable Properties Inc.	0	0	0	0	184	0	43	112	29	184	
Imi Ikena Apartments	511 Imi Place	Wailuku	Maui	EAH, Inc.	2	0	0	25	0	1	0	0	24	28	
Iwole Hale	181 Lanai Avenue	Lanai City, Lanai	Maui	Lanai Company										39	
Kahale Mui-Federal	P.O. Box 30	Maunaloa, Mo'orea	Maui	Hawaii Public Housing Authority	0	0	25	0	0	0	0	0	0	25	

Project	Address	City	Island	Managing Agent	Income Targets & Maximum Rents										Number of Units by Size					Units
					30%	40%	50%	55%	60%	60%		0	1	2	23					
Kahala Mue-State	Maunaloa, Molokai	Maunaloa, Molok	Maui	Hawaii Public Housing Authority	0	0	32	0	0	0	0	0	12	20	0	32				
Kahelili Terrace	2015 Hobowai Place	Wailuku	Maui	Hawaii Public Housing Authority	0	0	82	0	0	0	0	0	12	22	48	82				
Kahelili Terrace (A & B)	2015 Hobowai Place	Wailuku	Maui	Hawaii Public Housing Authority	0	0	82	0	0	0	0	0	12	22	48	82				
Kahului Town Terrace	170 Ho'ohana St.	Kahului	Maui	EAH, Inc.	4	0	0	0	67	0	0	38	28	5	72					
Komohana Apartments	120 Leoleo Street	Lahaina	Maui	Hale Mahalo	0	0	20	0	0	0	0				20					
Lahaina Honokowai Villa Apartments	3535 Lwr Honopiplani Hwy	Lahaina	Maui	AWI Management Corp.	4	0	51	0	0	0	0	28	27	0	56					
Lahaina Surf	1037C Wainee Street	Lahaina	Maui	Hale Mahalo	4	0	10	0	0	47	0	61	0	0	62					
Lokenani Hale	1889 Loke St.	Wailuku	Maui	Hale Mahalo											60					
Luana Gardens II	615 A W. Papa Avenue	Kahului	Maui	Hale Mahalo											62					
Makani Kai Hale	35 Koapaka Lane	Waiehu	Maui	Hawaii Public Housing Authority	0	0	25	0	0	0	0	0	0	25	25					
Makani Kai Hale II	35 Koapaka Lane	Waiehu	Maui	Hawaii Public Housing Authority	0	0	4	0	0	0	0	0	4	0	4					
Maunaloa Villas	62 Hoalua Lane	Maunaloa, Molok	Maui	Locations LLC	0	0	0	0	12	0	0	0	0	12	12					
No Hale O Wainee	15 Ipu'Aunakua Lane	Lahaina	Maui	Maui Economic Concerns of the Community											30					
Nani Maunaloa	62 Hoalua Lane	Maunaloa, Molok	Maui	Locations LLC	0	0	0	0	61	0					61					
Pihani Homes	1028 Wainee Street	Lahaina	Maui	Hawaii Public Housing Authority	0	0	42	0	0	0	32	10	0	0	42					
Uwapo Road Apartments (aka Brook Hollow)	141 Uwapo Road	Kihei	Maui	Marcus & Associates, Inc.											18					
Weinberg Court (aka Lahaina Affordables)	615 Lwr Honopiplani Hwy	Lahaina	Maui	Cirrus AMI	0	0	0	0	61	1					62					
220 California	220 California Avenue	Wahiawa	Oahu	Locations LLC	0	0	41	0	0	1	0	42	0	0	42					
Academy Gardens	1302 Victoria Street	Honolulu	Oahu	Hawaiian Properties, Ltd.											40					
Anahau Vista (FKA Tusitala Vista)	2428 Tusitala St.	Honolulu	Oahu	Locations LLC	11	0	95	0	0	0	0	99	7	0	107					
Aloun Off Farm Hsg.	104 Lakeview Circle	Wahiawa	Oahu	Mark Development, Inc.	0	0	12	0	0	0	0	0	12	0	12					
Artesian Vista	1828 Young St.	Honolulu	Oahu	Locations LLC	6	0	47	0	0	0	0	53	0	0	54					
Bachelor's Quarters	91-1216 Renton Road	Honolulu	Oahu	Hawaiian Properties, Ltd											10					
Banyan Street Manor	1122 Banyan Street	Honolulu	Oahu	Indigo Real Estate Services, Inc.	0	0	54	0	0	1	0	12	43	0	55					
Birch Street Apartments	916-920 Birch / 919 Alder	Honolulu	Oahu	Locations LLC	0	0	0	0	52	1	0	0	53	0	53					
Chinatown Gateway Plaza	1031 Nuuanu Avenue	Honolulu	Oahu	Hawaiian Properties, Ltd.											200					
Chinatown Manor	125 North Hotel Street	Honolulu	Oahu	EAH, Inc.	0	0	0	0	0	91	91	0	0	0	91					
Courtyards at Mililani Maita, The	95-1015 Koolani Drive	Mililani	Oahu	Management Specialists, Co.	0	0	0	0	48	0	0	12	24	12	48					
D. E. Thompson Village	91-1295 Renton Road	Ewa Beach	Oahu	Bob Tanaka Realty	8	0	1	0	140	0	0	126	23	0	150					
Franciscan Vistas Ewa	41-1471 Mula St.	Aiea	Oahu	Indigo Real Estate Svcs., Inc.	7	0	95	0	18	1	0	0	52	68	121					
Halea View Apartments	99-009 Kalaloa St.	Pearl City	Oahu	Pacific Realty Group	0	0	36	0	0	0	0	0	20	16	36					
Hale Lailima	1184 Waimano Home Rd	Waianae	Oahu	Hawaii Public Housing Authority	3	44	0	0	0	0	0	15	8	24	48					
Hale Makana O Nanakuli	800 Third St.	Pearl City	Oahu	CBM Hawaii, Inc.	0	0	42	0	166	0	178	32	0	0	210					
Hale Mohaliu	785 Kamehameha Hwy	Pearl City	Oahu	Locations LLC	10	0	116	0	42	0	0	0	128	40	168					
Hale Mohaliu II Family Housing	787 Kamehameha Hwy.	Pearl City	Oahu	Locations LLC	5	0	58	0	21	0	0	0	63	21	84					
Hale Mohaliu II Family IV	787 Kamehameha Hwy.	Pearl City	Oahu	Locations LLC	5	0	58	0	21	0	0	0	63	21	84					
Hale Mohaliu II Senior	787 Kamehameha Hwy.	Pearl City	Oahu	Locations LLC	9	0	0	0	154	0	0	163	0	0	164					
Hale O'Hauehi	950 Luehu Street	Pearl City	Oahu	Cambridge Management, Inc.											100					
Hale Pauehi	155 N. Beretania Street	Honolulu	Oahu	Hawaiian Properties, Ltd.											396					
Hale Pu'ai	1001 N. School Street	Honolulu	Oahu	Hawaii Public Housing Authority	0	0	126	0	0	0	80	126	0	0	206					
Hale Uhiwai Nalu (FKA Building 34)	91-1078 Yorktown St.	Kalaheo	Oahu	Cloudbreak Hawaii, LLC	3	0	25	0	20	22	70	0	0	0	70					
Hale Uhiwai Nalu Addition	91-1078 Yorktown St.	Kapolei	Oahu	Cloudbreak Hawaii, LLC	3	0	14	0	15	18	50	0	0	0	50					
Hale Wai Vista Phase I	86-084 Farrington Hwy.	Waianae	Oahu	Locations LLC	5	0	78	0	0	0	0	0	63	20	84					
Hale Wai Vista, Ph. 2	86-086 Farrington Highway	Waianae	Oahu	Locations LLC	10	0	116	0	42	0	0	0	120	42	132					
Halekua Senior Citizens	66-477 Palala Road	Haleiwa	Oahu	Hawaiian Properties, Ltd											60					
Halekua Place	665 Halekua Street	Honolulu	Oahu	Indigo Real Estate Services, Inc.	0	0	0	0	204	0	26	72	83	23	204					
Halia Hale	851 N. School Street	Honolulu	Oahu	Hawaii Public Housing Authority	0	0	41	0	0	0	30	11	0	0	41					
Harbor Village	901 River Street	Honolulu	Oahu	Hawaiian Properties, Ltd.											90					

Project	Address	City	Island	Managing Agent	Income Targets & Maximum Rents					Number of Units by Size					Units	
					30%	40%	50%	55%	60%-60%	0	1	2	23			
Harry & Jeannette Weinberg, Nanakieola Senior Apts.	87-1122 Nanakieola Street	Waiānae	Oahu	EAH, Inc.	0	0	40	0	0	0	0	40	0	0	40	
Harry & Jeannette Weinberg, Philip St Elderly Hsg	1515 Philip Street	Honolulu	Oahu	Foundation Property Mgt Inc	0	0	34	0	0	0	0	34	0	0	34	
Harry & Jeannette Weinberg, Sea Winds Apts	85-295 Kaulakalani Place	Waiānae	Oahu	Housing Solutions, Inc.	0	0	0	0	50	0	20	0	30	0	50	
(FKA Maluhia Elderly)	1111 Hala Dr.	Honolulu	Oahu	Hawaiian Properties, Ltd.	0	0	39	0	0	0	0	39	0	0	40	
Harry & Jeannette Weinberg Silvercrest	520 Pine Avenue	Wahiawa	Oahu	The Salvation Army	0	0	78	0	0	2	0	80	0	0	80	
Hauiki Homes	Meyers Street	Honolulu	Oahu	Hawaii Public Housing Authority	0	0	46	0	0	0	0	20	26	46		
Hauisten Gardens	808 Hauisten Street	Honolulu	Oahu	Bob Tanaka, Inc.	0	0	50	0	0	0	0	50	0	0	50	
Honukaka	545 Queen Street	Honolulu	Oahu	Management Specialists Co.	0	0	0	0	150	0	141	9	0	0	150	
Hookipa Kahului	47-330 Ahumahu Road	Kaneohe	Oahu	Hawaii Public Housing Authority	0	0	56	0	0	0	0	8	32	16	56	
Ho'olu	94-943 Kau'olu Place	Waipahu	Oahu	Hawaii Public Housing Authority	0	0	112	0	0	0	86	26	0	0	112	
Jack Hall Waipahu	94-817 Kūhāhūa Street	Waipahu	Oahu	Bob Tanaka, Inc.	0	0	143	0	0	1	0	104	50	0	144	
Kaahumanu Homes	Alokele & Kauiwila Street	Honolulu	Oahu	Hawaii Public Housing Authority	0	0	152	0	0	0	0	116	36	152		
Kahuku Elderly Hauoli Hale	56-154 Pu'uhana Street	Kahuku	Oahu	EAH, Inc.	0	0	64	0	0	0	0	64	0	0	64	
Kalaikua Homes	1545 Kalaikua Avenue	Honolulu	Oahu	Hawaii Public Housing Authority	0	0	221	0	0	0	0	127	58	36	221	
Kalaikua Vista	1620 & 1628 Kalaikua Ave.	Honolulu	Oahu	Locations LLC	8	0	0	0	72	0	0	80	0	0	81	
Kalanii Garden Apartments	95-081 Kīpapa Drive	Mililani	Oahu	Ecumenical Assoc. for Housing	0	0	0	0	116	2	0	4	84	30	118	
Kalanihaha	1220 Aala Street	Honolulu	Oahu	Hawaii Public Housing Authority	0	0	151	0	0	0	60	90	0	1	151	
Kalihi Valley Homes	2250 Kalena Drive	Honolulu	Oahu	Hawaii Public Housing Authority	0	0	373	0	0	0	0	52	60	261	373	
Kaliuanu Sr. Apts	6950 Hawaii Kai Dr.	Honolulu	Oahu	Hawaii Affordable Properties	6	0	25	0	0	0	0	10	21	0	31	
Kamakee Vista	1065 Kawalahao Street	Honolulu	Oahu	Hawaii Affordable Properties	0	0	0	0	0	0	0	85	24	0	109	
Kamehameha Homes	1541 Haha Drive	Waipahu	Oahu	Hawaii Public Housing Authority	0	0	109	0	0	0	0	85	24	0	221	
Kaneohe Apartments	45-507 & 45-513 Pahia Road	Honolulu	Oahu	Hawaii Public Housing Authority	0	0	221	0	0	0	0	62	123	36	221	
Kaneohe Elderly	45-457 Meili Place	Kaneohe	Oahu	Hawaii Public Housing Authority	0	0	24	0	0	0	0	5	19	0	24	
Kaneohe Apartments	846 Kanoa Street	Honolulu	Oahu	Cambridge Management, Inc.	0	0	44	0	0	0	0	44	0	0	44	
Kapolei Ho'olima	91-1117 Kaohimaka St	Kapolei	Oahu	Hawaiian Properties, Ltd.	0	0	0	0	71	0	0	0	71	71	14	
Kapolei Lofts	761 Wakea Street	Kapolei	Oahu	Mark Development, Inc.	0	0	0	0	0	0	499	0	204	256	39	499
Kapuna I Apartments	1015 N. School Street	Honolulu	Oahu	Forest City	0	0	161	0	0	1	0	162	0	0	162	
Kaulahe Kakaako	860 Haleaewa Street	Honolulu	Oahu	Sage Apt. Communities, Inc.	0	0	0	0	0	0	268	0	117	151	0	268
Kaulahe Nani	310 North Cane Street	Wahiawa	Oahu	Hawaii Affordable Properties	0	0	50	0	0	0	0	14	16	20	50	
Kaulahe O'hana	41-1260 Kalamanaole Hwy	Waimanalo	Oahu	Hawaii Public Housing Authority	0	0	25	0	0	0	0	0	0	0	25	
Kau Iokalani	85-658 Farrington Highway	Waiānae	Oahu	Hawaii Public Housing Authority	0	0	50	0	0	0	0	0	0	0	50	
Kawaiki Maluwa Apartments (Fka Wilkina Apartments)	730 Wilkina Drive	Wahiawa	Oahu	Cambridge Management, Inc.	0	0	0	0	118	1	0	79	40	0	119	
Kekaulike Courtyards	1016 Maunakea Street	Honolulu	Oahu	Mutual Hsg. Assoc of Hawaii	0	0	75	0	0	0	0				75	
Kekulani Courts	91-1083 Kekulani Loop	Kapolei	Oahu	Hawaii Affordable Properties	0	0	0	0	40	39	0	0	80	0	79	
Kekulani Gardens	91-1045 Kekulani Loop	Kapolei	Oahu	Realty Lane, LLC	3	0	52	0	0	0	0	0	55	0	55	
Keola Hoomalu Elderly	85-259 Plantation Road	Waiānae	Oahu	Urban Management Corp.											35	
Keola Hoonanea	1465 Aala Street	Honolulu	Oahu	Hawaiiana Management Co., Ltd.											175	
Kewalo Apartments	1407 Kewalo St.	Honolulu	Oahu	Pacific Realty Group	2	0	31	0	4	1	0	0	37	0	38	
Kihoaana Apartments	45-265 William Henry Rd	Kaneohe	Oahu	Qualpac Mgt. Corporation	7	0	0	0	55	0	0	62	0	0	148	
Kinau Vista	3150 Kinau St.	Honolulu	Oahu	Locations LLC	7	0	0	0	55	0	0	62	0	0	63	
Koolau Village	45-1027 Kamau Place	Kaneohe	Oahu	Hawaii Public Housing Authority	0	0	80	0	0	0	0	8	24	48	80	
Ko'ohala Phase I	94-1119 Keshunua Pkwy.	Ewa Beach	Oahu	Mutual Hsg. Assn of Hawaii	7	0	16	0	96	0	0	25	59	35	120	
Ko'ohala Phase II	91-1159 Keshunua Pkwy.	Ewa Beach	Oahu	Mutual Housing Assn. of Hawaii	12	0	25	0	151	0	0	29	110	49	188	
Kuhio Homes	Ahonoa Street	Honolulu	Oahu	Hawaii Public Housing Authority	0	0	134	0	0	0	0	20	32	82	134	
Kukui Gardens Makai	1305 Uliha Street	Honolulu	Oahu	EAH, Inc.	0	0	0	0	379	10	0	115	106	168	389	
Kukui Tower /Fka Beretania North	35 N. Kukui Street	Honolulu	Oahu	Ecumenical Assoc. for Housing	0	0	76	0	0	304	0				380	
Kulana Hale	1551 S. Beretania St.	Honolulu	Oahu	Fdn for Social Resources, Inc.	0	0	35	0	140	0	122	43	10	0	176	



Project	Address	City	Island	Managing Agent	Income Targets & Maximum Rents 30% 40% 50% 55% 60% >60%										Number of Units by Size				Units
Kulana Nani	46-229 Kauhupa Street	Kaneohe	Oahu	Ecumenical Assoc. for Housing	9	0	49	0	10	17	0	86	0	0					160
Kulanakauhale Maluhia O Na Kupuna	41-209 Iiauhole Street	Waimanalo	Oahu	Locations LLC	16	0	56	0	0	0	24	0	48	0	0				86
Kulua 'Ika Nu u (Ika Kahiko Omana Hale o Wai'anae)	85-296 Ala Hema Street	Wai'anae	Oahu	United States Veterans Initiative	0	0	40	0	0	0	24	16	0	0	0				72
Kupuna Home O Wai'anae	67-088 Goodale Avenue	Wai'anae	Oahu	Hawaii Public Housing Authority	0	0	108	0	0	0	60	48	0	0	0				108
La Iola	1 & 15 Hooho Place	Wahiawa	Oahu	Hawaii Public Housing Authority	0	0	108	0	0	0	60	48	0	0	0				108
Lanikaia Gardens	833 School Street	Honolulu	Oahu	Bob Tanaka, Inc.															28
Lani Hui (Kaliua Elderly)	25 Aulike Street	Kaliua	Oahu	Bob Tanaka, Inc.															82
Mali I	Makana Street	Mali	Oahu	Hawaii Public Housing Authority	0	0	20	0	0	0	0	0	7	13	20				20
Mali II	Keikiapi Street	Mali	Oahu	Hawaii Public Housing Authority	0	0	24	0	0	0	0	0	12	12	24				24
Makalapa Manor Apartments	99-120 Kokoona St	Ala	Oahu	Hawaiian Properties, Ltd															124
Makanae	21 S. Kuakini Street	Honolulu	Oahu	Qualpac Management Corp	0	0	124	0	0	0	108	16	0	0	0				124
Makana Hale	95-141 Kipapa Drive	Mililani	Oahu	Hawaiian Public Housing Authority	0	0	211	0	0	0	0	210	0	1	211				126
Makua Alii	1541 Kalaheua Avenue	Honolulu	Oahu	Urban Management Corp.	0	0	211	0	0	0	0	0	0	1	211				150
Makua Hale	114 N. Kuakini Street	Honolulu	Oahu	Locations LLC	0	0	0	0	0	71	1	0	0	72	0	72			150
Maunaloa Gardens	949 Luehu Street	Pearl City	Oahu	Locations LLC	0	0	0	0	0	0	80				0	0			80
Maunaloa Gardens	2790 Kahahele Drive	Honolulu	Oahu	Locations LLC	0	0	0	0	0	0	80								236
Maunaloa Tower	60 North Minitz Hwy	Honolulu	Oahu	Hawaiian Properties, Ltd.	0	0	380	0	0	0	0	0	254	126	0	380			236
Mayor Wright Homes	1245 Maunaloa Street	Honolulu	Oahu	Sandwood Management, Inc.	0	0	364	0	0	0	0	24	114	226	364				380
Mahela Vista I	521 N. Kuku Street	Honolulu	Oahu	Hawaiian Public Housing Authority	4	0	71	0	0	0	0	0	75	0	0	76			76
Mahela Vista I	95-1080 Lehiwa Drive	Mililani	Oahu	Locations LLC	4	0	0	0	0	65	0	0	0	69	0	70			76
Makuaa Vista	94-333 Mokuaia St.	Waipahu	Oahu	Locations LLC	4	0	0	0	0	65	0	0	0	69	0	70			76
Ma Lei Hui Kupuna	610 Cooke Street	Honolulu	Oahu	Mark Development, Inc.	0	0	0	0	0	76	0	76	0	0	0	76			76
Naholea	1020 Iseberg Street	Honolulu	Oahu	Housing Solutions, Inc.	0	0	0	0	0	76	0	76	0	0	0	76			76
Nanakuil Homes	Luaiel Pl & Farrington Hwy	Nanakuil	Oahu	Hawaiian Public Housing Authority	0	0	36	0	0	0	0	0	0	0	36				36
Oasis at Waipahu (Nova Sunset Villas)	94-207 Waipahu Street	Waipahu	Oahu	AMC, LLC															406
Old Vineyard Street	265 S. Vineyard Street	Honolulu	Oahu	Urban Management Corp															32
Palehua Terrace	92-1074 Palihua St.	Kapolei	Oahu	Management Specialists Co.	0	0	0	0	0	83	0	0	0	76	7	84			84
Palehua Terrace, Phase 2	Palihua St.	Kapolei	Oahu	Management Specialists Co.	7	0	0	0	0	57	0	0	0	56	8	64			64
Palolo Valley Homes	2107 Ahe Street	Honolulu	Oahu	Hawaiian Public Housing Authority	0	0	118	0	0	0	0	0	8	34	76	118			118
Palolo Valley Homes	2170 Ahe St.	Honolulu	Oahu	Mutual Hsg Assn of Hawaii	36	0	259	0	10	0	0	25	128	152	306				306
Paakalani	1583 Kalaheua Avenue	Honolulu	Oahu	Hawaiian Public Housing Authority	0	0	151	0	0	0	0	90	60	0	1	151			151
Paahuli Elderly	167 N. Paahuli Street	Honolulu	Oahu	Foundation Property Mgmt. Inc.	0	0	47	0	0	1	12	36	0	0	0	48			77
Paahuli Hale	126 North Paahuli Street	Honolulu	Oahu	Hawaiian Properties, Ltd.	0	0	47	0	0	0	0	47	0	0	0	47			77
Pikoi Vista	1326 Pikoi Street	Honolulu	Oahu	Locations LLC	0	0	47	0	0	0	0	47	0	0	0	47			47
Pohulani Elderly	626 Coral Street	Honolulu	Oahu	Hawaiian Affordable Properties	0	0	0	0	0	0	263	128	135	0	0	262			262
Puhalala Homes I	Ahihi Place & Hala Drive	Honolulu	Oahu	Hawaiian Public Housing Authority	0	0	28	0	0	0	0	0	0	0	28	28			28
Puhalala Homes II	Ahihi Place	Honolulu	Oahu	Hawaiian Public Housing Authority	0	0	20	0	0	0	0	0	0	12	8	20			20
Puhalala Homes III	Ahihi Place	Honolulu	Oahu	Hawaiian Public Housing Authority	0	0	40	0	0	0	0	10	14	16	40				40
Puhalala Homes IV	School St & Lanakila Ave	Honolulu	Oahu	Hawaiian Public Housing Authority	0	0	40	0	0	0	0	4	32	4	40				40
Puhalani Manor	1216 Pua Lane	Honolulu	Oahu	Hawaiian Properties, Ltd.															63
Pumehana	1212 Kinau Street	Honolulu	Oahu	Hawaiian Public Housing Authority	0	0	139	0	0	0	0	98	40	1	0	139			139
Punchbowl Homes	730 Captain Cooke Avenue	Honolulu	Oahu	Hawaiian Public Housing Authority	0	0	156	0	0	0	0	0	97	58	1	156			156
Puuwai Momi	99-132 Kokoona Street	Ala	Oahu	Hawaiian Public Housing Authority	0	0	260	0	0	0	0	48	86	126	260				260
River Paahuli Apartments	1155 River Street	Honolulu	Oahu	United Horizons Realty, LLC	0	0	48	0	0	1	0	42	7	0	49				49
Royal Kinu	728 Kinu St.	Honolulu	Oahu	Locations LLC	0	0	83	0	0	0	0	0	60	23	0	84			84
Salt Lake	2907 Ala Ilima Street	Honolulu	Oahu	Hawaiian Public Housing Authority	0	0	28	0	0	0	0	0	28	0	0	28			28
Senior Residence at Iwilei	888 Iwilei Road	Honolulu	Oahu	Management Specialists Co.	0	0	40	0	119	1	0	147	13	0	160				160
Senior Residence at Kaneohe	45-705 Kamehameha Hwy.	Kaneohe	Oahu	Management Specialists Co.	0	0	0	0	30	0	0	30	0	0	30				30
Senior Residence at Kapolei	91-1034 Nanihale St.	Kapolei	Oahu	Management Specialists Co.	6	0	53	0	0	0	0	0	59	0	0	60			60
Senior Residence at Kapolei 2	91-1098 Nanihale St.	Kapolei	Oahu	Management Specialists Co.	1	0	19	0	0	0	0	0	20	0	0	20			20

Project	Address	City	Island	Managing Agent	Income Targets & Maximum Rents						Number of Units by Size						Units
					30%	40%	50%	55%	60%	>60%	0	1	2	23			
Smith-Beretania Apartments	1170 Nuuanu Avenue	Honolulu	Oahu	Shove Builders, Inc.	0	0	163	0	0	1	0	82	82	0	164		
Spencer House	1035 Spencer Street	Honolulu	Oahu	Hawaii Public Housing Authority	0	0	17	0	0	0	0	0	1	16	17		
Towers at Kuhio Park/ Rua Kuhio Park Terrace	1475 Linapuni Street	Honolulu	Oahu	Interstate Realty Mgmt Company	0	0	0	0	556	0	0	45	315	196	556		
Villages at Moa'e Ku (FKA Ewa Villages Ph. I)	91-1655 Panika St.	Ewa Beach	Oahu	EAH, Inc.	4	0	18	0	41	0	0	6	32	25	64		
Villages at Moa'e Ku Ph. II (FKA Ewa Villages Ph. II)	91-1644 Panika St.	Ewa Beach	Oahu	EAH, Inc.	4	0	19	0	52	0	0	9	37	29	76		
Villages at Moa'e Ku Ph. III (FKA Ewa Villages Ph. III)	91-1290 Renton Rd. (Temp)	Ewa Beach	Oahu	EAH, Inc.	3	0	21	0	28	0	0	4	28	20	52		
Villas at Aiea, The	91-1118 Namahoe Street	Kapolei	Oahu	Management Specialists Co.	0	0	0	0	71	0	0	20	31	20	71		
Villas at Maile'ohai	91-1025 Kala Avenue	Kapolei	Oahu	Management Specialists Co.	0	0	4	0	67	1	0	0	56	16	72		
Waena Apartments (Kukui Gardens Mauka)	1320 Ala Street	Honolulu	Oahu	Carnel Partners	0	0	0	0	0	468					468		
Wahiawa Terrace	300 Palm Street	Wahiawa	Oahu	Hawaii Public Housing Authority	0	0	60	0	0	0	0	12	16	32	60		
Waiala	827 Waiala Road	Honolulu	Oahu	PU Property Management	0	0	0	0	0	8	0	2	6	0	8		
Waimaha-Sunflower	85-186 McArthur Street	Waianae	Oahu	Hawaii Public Housing Authority	0	0	130	0	0	0	0	52	46	32	130		
Waimanalo Apartments	41-545 Hihimanu Street	Waimanalo	Oahu	Cambridge Management, Inc.											79		
Waimanalo Homes	Humuniki St & Humuna Pl	Waimanalo	Oahu	Hawaii Public Housing Authority	0	0	19	0	0	0	0	0	5	14	19		
Waimanalo Homes II	Humuniki St & Humuna Pl	Waimanalo	Oahu	Hawaii Public Housing Authority	0	0	22	0	0	0	0	0	14	8	22		
Waipahu Hall	94-1060 Waipahu Street	Waipahu	Oahu	Cambridge Management, Inc.	0	0	71	0	0	1	0	72	0	0	72		
Waipahu I	94-111 Pupuke Street	Waipahu	Oahu	Hawaii Public Housing Authority	0	0	19	0	0	0	0	0	12	7	19		
Waipahu II	94-132 Pupuke Street	Waipahu	Oahu	Hawaii Public Housing Authority	0	0	20	0	0	0	0	0	15	5	20		
Waipahu Tower	94-337 Pupunoni St	Waipahu	Oahu	Hawaiian Properties, Ltd.											63		
Weinberg Hale	2734 S King St.	Honolulu	Oahu	Housing Solutions, Inc.	6	0	24	0	29	0	59	0	0	0	59		
West Loch Elderly Village	91-1472 Renton Road	Ewa	Oahu	EAH, Inc.	0	0	0	0	150	0		0	0	0	150		
Westlake Apartments	3139 Ala Ilima Street	Honolulu	Oahu	Hawaiian Properties, Ltd.	0	0	95	0	0	1	0	0	96	0	96		
Whitmore Circle Apartments	111 Circle Makai Street	Wahiawa	Oahu	Mark Development, Inc.	0	0	44	0	0	0	0	40	4	0	44		
Wilder Vista (FKA Punahele Vista)	1566 Wilder Ave.	Honolulu	Oahu	Locations LLC	6	0	48	0	0	0	0	6	48	0	55		
Wilikina Park Elderly	298 Wilikina Drive	Wahiawa	Oahu	Sandwood Management, Inc.	0	0	0	0	64	0	45	19	0	0	64		
Winston Hale	1055 River Street	Honolulu	Oahu	Hawaiian Properties, Ltd.											93		
Wisteria Vista (FKA King St. Apts.)	1239 S. King St.	Honolulu	Oahu	Locations LLC	0	0	91	0	0	0	0	91	0	0	91		
680 Ala Moana	680 Ala Moana Blvd.	Honolulu	Oahu	Citrus AML	0	0	0	0	54	0	0	42	12	0	54		

### Housing Production Projections 5-26-16

Rental Project	Developer	Island	Units	Type	Estimated Start	Estimated Completion
Hale Mohalu II – Family IV	Coalition of Specialized Hsg	Oahu	84	F	Jan. 2014	Dec. 2015
Kaniko'o I Sr.	Rice Camp Partnership LP	Kauai	60	E		April 2016
Kolopua	Kolopua Partnerships LP	Kauai	44	F		April 2016
Kalani Gardens	Hui Kauhale, Inc.	Oahu	118	F	March 2015	April 2016
Kapolei Lofts	Forest City Kapolei Apt, LLC	Oahu	324	F	Jan. 2015	June 2016
440 Keawe	Kaloko'eli Properties LLC	Oahu	88	F	Dec. 2014	July 2016
Kaniko'o II Sr.	Ahe Group, LLC	Kauai	30	E	March 2016	Oct. 2016
West Hawaii Micro Units		Hawaii	32		Feb. 2016	Oct. 2016
Kaneohe Elderly rehab	Ahe Group, LLC	Oahu	44	E	Feb. 2016	Nov. 2016
Meheula Vista I	Catholic Charities Hsg Dev. Corp.	Oahu	76	E	July 2015	Dec. 2016
Villages of Moa'e Ku III	EAH, Inc.	Oahu	52	F	Dec. 2015	Dec. 2016
Kamana Elderly	U00660 Hilo, LP	Hawaii	62	E	Oct. 2016	Feb. 2017
Waipahu Hall Sr. rehab	McDonald Ladd, LLC	Oahu	72	E	July 2016	Feb. 2017
Hale Uhiwai Nalu Addition	Cloudbreak Hawaii, LLC	Oahu	50	F	Jan. 2016	Jan. 2017
Kekuiani Gardens	Vitus Development, LLC	Oahu	56	F	June 2016	Feb. 2017
Kunia Village	Kunia Village Dev. Corp.	Oahu	82	F	April 2016	Feb. 2017
Mohouli Hts Sr Ph. 2	Mohouli Senior Ph. 2 LLLP	Hawaii	30	E	Oct. 2015	March 2017
Ko'o'loa'ula II	Mutual Housing Assoc. of Hawaii	Oahu	188	F	April 2015	March 2017
Kulamalu Affordable Family	Everett Dowling of Kulamalu LLC	Maui	56	F	Feb. 2016	April 2017
Hualalai Court		Hawaii	108		Jan. 2017	June 2017
Kapolei Lofts	Forest City Kapolei Apts, LLC	Oahu	175	F	Jan. 2015	Aug. 2016
Keauhou Lane	Gerding/Edlen Dev. Co., LLC	Oahu	209	F	March 2016	Sept. 2017
Ainahau Vista II	Hawaii Housing Dev. Corp.	Oahu	62	E	April 2016	Oct. 2017
Haili Court		Hawaii	105		July 2017	Dec. 2017
Na Lei Hulu Kupuna Sr	Na Lei Hulu Kupuna L.P.	Oahu	76	E	Jan. 2017	Dec. 2017
Meheula Vista II	Catholic Charities Hsg Dev. Corp.	Oahu	75	E	Sept. 2016	Dec. 2017
Kamakana Sr.	Michaels Dev. Co. I, LP	Hawaii	85	E	June 2016	Dec. 2017
Kamakana Family	Michaels Dev. Co. I, LP	Hawaii	85	F	June 2016	Dec. 2017
Mohouli Hts. Sr. Ph. 3	Mohouli Senior Phse 3 LLLP	Hawaii	60	E	Nov. 2016	Jan. 2018
Luna Loa Development		Hawaii	60		Jan. 2017	Jan. 2018
Meheula Vista III	Catholic Charities Hsg Dev. Corp.	Oahu	75	E	Sept. 2016	March 2018
Koa'e		Kauai	128		March 2017	March 2018
Kulana Hale Elderly	Coastal Rim Properties, Inc.	Oahu	154	E	Aug. 2016	April 2018
Ola Ka 'Ilima Art Space	Ola Ka Ilima Lofts LLLP	Oahu	84	F	Nov. 2016	May 2018
Hale Kewalo	Hale Kewalo LP	Oahu	128	F	March 2017	May 2018
East Kapolei II Parcel 2, Ph. 1	Michaels Dev. Co. I, LP	Oahu	75	F	Nov. 2016	June 2018
N/W Corner Kapolei		Oahu	48		June 2017	June 2018
Lima Ola		Kauai	133		June 2017	June 2018
East Kapolei II Parcel 2, Ph. 2	Michaels Dev. Co. I, LP	Oahu	75	F	Nov. 2017	Aug. 2018
Hale Mahaolu Ewalu Senior	Hale Mahaolu Ewalu, Inc.	Maui	60	E	Sept. 2016	Dec. 2018
Hualalai Kai		Hawaii	291		XXX 2017	XXX 2018
Meheula Vista III	Catholic Charities Hsg Dev. Corp.	Oahu	75	E		June 2019
630 Cooke St. (micro units)	630 Cooke St. Partnership LP	Oahu	104	F	May 2017	Dec. 2018
N/W Corner Kapolei		Oahu	48		June 2018	June 2019

### Housing Production Projections 5-26-16

Rental Project	Developer	Island	Units	Type	Estimated Start	Estimated Completion
N/W Corner Kapolei		Oahu	80		Dec. 2018	Dec. 2019
Meheula Vista IV	Catholic Charities Hsg Dev. Corp.	Oahu	75	E	July 2018	Dec. 2019
Kaloko Heights		Hawaii	135		XXX 2017	XXX 2019
Ka Hui Na Ko'a O Kawili		Hawaii	75		XXX 2017	XXX 2020
N/W Corner Kapolei		Oahu	72		June 2019	June 2020
East Kapolei II Parcel 2, Ph. 3	Michaels Dev. Co. I, LP	Oahu	75	F	Nov. 2019	Nov. 2020
N/W Corner Kapolei		Oahu	90		Dec. 2019	Dec. 2020
<b>Subtotal 2020</b>			<b>4728</b>			
Alder Street		Oahu	180	F	Dec. 2019	Aug. 2021
East Kapolei II Parcel 2, Ph. 4	Michaels Dev. Co. I, LP	Oahu	75	F	Dec. 2020	Aug. 2021
690 Pohukaina	Forest City Hawaii	Oahu	330	F		2021
N. School Street <sup>1</sup>		Oahu	400			2021
Kuhio Park Terrace phase		Oahu	434			2021
Mayor Wright Homes	Hunt Companies	Oahu	1200			2025
<b>Subtotal 2021+</b>			<b>2619</b>			
<b>Total Rentals</b>			<b>7347</b>			

<sup>1</sup> Red font listings indicate Hawai'i Public Housing Authority Projects that are still in the negotiation stage.

### Housing Production Projections 5-26-16

Sales	Developer	Island	Units	Estimated Start	Estimated Completion
Symphony	Oliver McMillan Hawaii	Oahu	388	April 2014	May 2016
801 South St. B	Downtown Capitol, LLC	Oahu	410	May 2014	Dec. 2016
400 Keawe	Castle & Cooke Homes Hawaii, Inc.	Oahu	95	Dec. 2014	May 2016
Ola Hou Estates		Hawaii	150	Dec. 2016	June 2017
Kohea Loa Ho'olauna		Kauai	151	June 2016	June 2017
Ele'ele 'Iluna Phase 2A		Kauai	48	June 2015	June 2017
Kamalani Phase I		Maui	170	April 2016	April 2018
Kalama Kai		Maui	40	June 2016	June 2018
Kaiaulu Kaanapali		Maui	33	Dec. 2016	June 2018
Mokuhau		Maui	16	Dec. 2016	June 2018
Ele'ele Iluna Phase 2A		Kauai	59	June 2016	June 2018
Lima Ola		Kauai	33	June 2017	June 2018
Aina Lea		Hawaii	384	June 2016	XXX 2018
Waiakea Fairway Subdivision		Hawaii	8	XXX 2016	XXX 2018
Keauhou Place	Stanford Carr Dev.	Oahu	423	Jan. 2016	Dec. 2018
803 Waimanu	MJF Development Corp.	Oahu	153	Dec. 2016	June 2018
Ohana Hale	MJF Development Corp.	Oahu	180	Dec. 2016	June 2018
VOK: Village 8 Cluster		Oahu	90	June 2017	June 2018
Waiale		Maui	70	Dec. 2016	Dec. 2018
Kahoma (West Maui Land)		Maui	68	Dec. 2016	Dec. 2018
988 Halekauwila/404 Ward	Howard Hughes Corp.	Oahu	424	July 2016	Dec. 2018
N/W Corner Kapolei		Oahu	42	June 2018	June 2019
Keahuolu III – Kamakana		Hawaii	100		XXX 2019
Kapiolani Residence	SamKoo Pacific, LLC	Oahu	485	Nov. 2016	Nov. 2019
Kapolei Mixed Use F5	Coastal Rim Properties, Inc.	Oahu	143	June 2018	June 2020
N/W Corner Kapolei		Oahu	34	June 2019	June 2020
Kumulani Gardens		Hawaii	83		XXX 2020
Keahuolu III – Kamakana		Hawaii	100		XXX 2020
<b>Subtotal 2020</b>			<b>4380</b>		
Keahuolu III – Kamakana		Hawaii	80		XXX 2021
Keahuolu III – Kamakana		Hawaii	80		XXX 2022
<b>Subtotal 2020+</b>			<b>160</b>		
<b>Total For-Sale</b>			<b>4540</b>		

# **NEED HELP? SEEKING ASSISTANCE? DON'T KNOW WHERE TO TURN? CALL 211. (Or toll-free at 1-877-275-6569)**

---

**211 IS A FREE, CONFIDENTIAL SERVICE  
OFFERED STATEWIDE FOR PEOPLE WHO NEED HELP.  
CALL 211 FOR HELP FINDING THE SERVICES YOU NEED:**

---

- Homeless rental assistance
- Financial assistance for housing
- Basic Needs (food, shelter, clothing)
- Childcare and education services
- Consumer complaints
- Crisis intervention
- Disability services
- Donation information
- Domestic violence programs
- Elderly care services
- Employment resources
- Family counseling
- Legal assistance
- Substance abuse treatment
- Suicide prevention
- And much, much more!



## **HOURS OF OPERATION**

---

Call Monday - Friday, 7 a.m. - 5p.m.

Toll-free number 1-877-275-6569.

Or anytime by visiting: [www.auw211.org](http://www.auw211.org) or [facebook.com/AlohaUnitedWay211](https://facebook.com/AlohaUnitedWay211)



Aloha United Way



[auw.org](http://auw.org)

200 N. Vineyard Boulevard, Suite 700 • Honolulu, HI 96817 • 808.536.1951