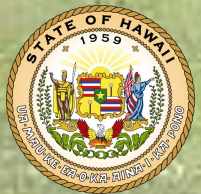


Home Sweet Home

A plan to evaluate
Hawaii's Homeless Services System

June 2019



 focalize



Purpose of the Evaluation

- 1. To understand the impact of Housing First and Ohana Zones on improving access to permanent housing**
- 2. To identify what is required to improve access to permanent housing, and, ultimately, end homelessness in Hawaii.**

Evaluation Approach

TYPICAL

Specific focus

Partial view of the system



IMPLEMENTATION SCIENCE

Systems approach

Comprehensive view of the system





Active Implementation Frameworks

Allison Metz and Leah Bartley

- Implementation Stages
- Implementation Drivers
- Feedback Loops
- Implementation Support

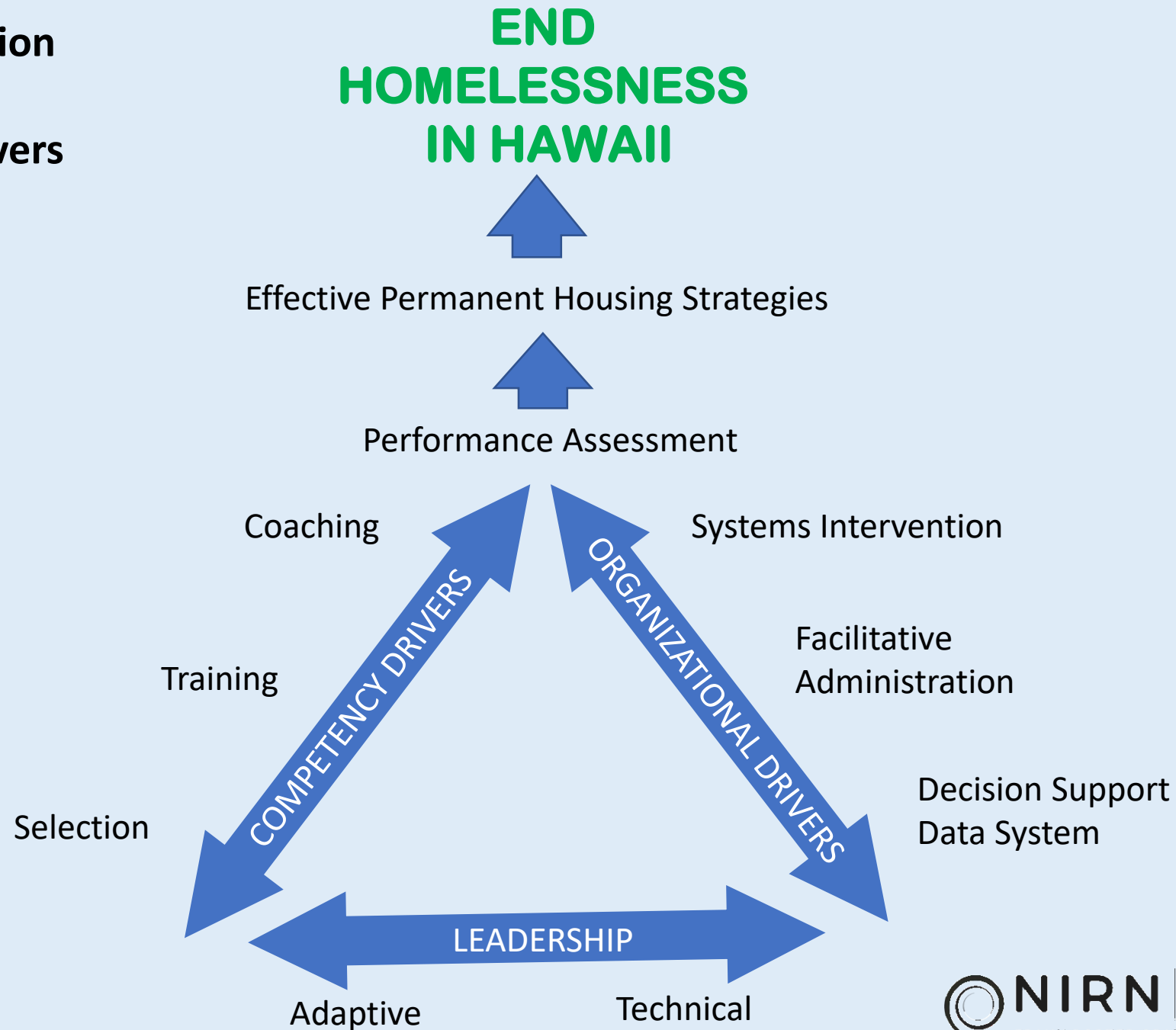


NIRN

NATIONAL IMPLEMENTATION
RESEARCH NETWORK

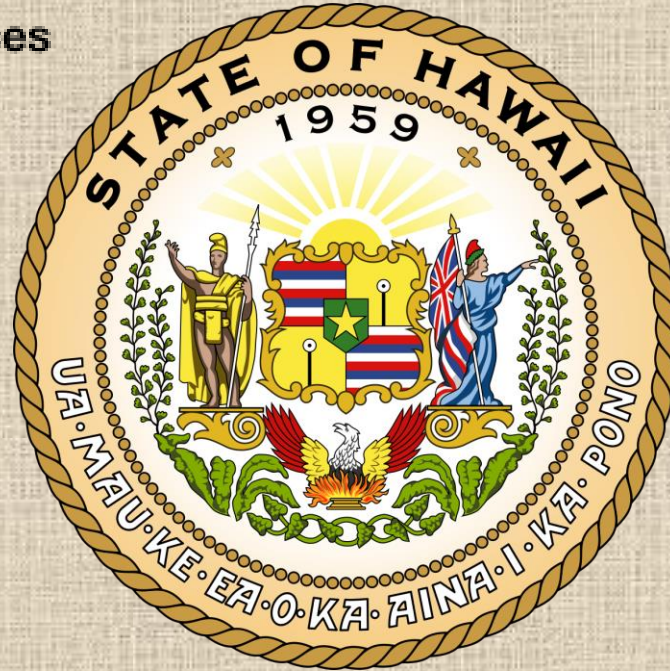
FRANK PORTER GRAHAM CHILD DEVELOPMENT INSTITUTE

**Active Implementation
Frameworks:
Implementation Drivers**





Administration for Children's Services



Housing Innovations



THE ANNIE E. CASEY FOUNDATION





Data Collection

- Direct observation
- Ethnography
- Materials Review
- Interviews

Results?

1. Annual progress reports (3 years)
2. Opportunity for feedback and input throughout
3. Recommendations detailing what is required to end homelessness in Hawaii

Home Sweet Home

