

Oahu Housing Now Presentation to the Hawaii Interagency Council on Homelessness 6-21-2021

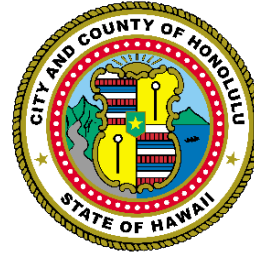


Homeless

PARTNERS IN CARE *Oahu's Continuum of Care*

Mission: To eliminate homelessness through open and inclusive participation and the coordination of integrated responses

Partnerships



Funders



PARTNERS IN CARE
Oahu's Continuum of Care

**Lead Agency &
Unit Acquisition**



**Rental
Assistance**

Case Management Programs



Community Partnerships

Donation Drive Leaders

- Agents of Change

Moving Volunteers

- Kanu Hawaii
- Community Volunteers
- Five Star Transportation



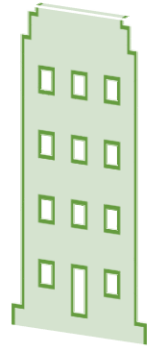
Furniture Partners

- Aulani
- ValYou Furniture
- Ross' Furniture

Home Kit Creation

- Rotary Clubs

OHN Project Components



Component #1 – Unit Identification

- LEP
- CMs provide Housing Navigation services
- 1 month Security Deposits
- 2-month Landlord Incentives



Component #2 – Rental Assistance

- Standard 12 months of rental assistance
- Standard 12 months of utility assistance



Component #3 – Case Management

- 1:20-25 Caseload
- Limited housing identification
- CMs provide Housing Stabilization services
- Furniture
- Welcome Kits



PARTNERS IN CARE *Oahu's Continuum of Care*

Mission: To eliminate homelessness through open and inclusive participation and the coordination of integrated responses

OHN Objectives

- ✓ **Slow the spread of COVID-19**
 - Housing is the most secure method of social distancing for homeless households
 - 12 months from now, most people will have had access to the vaccine, making it safer
- ✓ **House people and improve rental history**
 - No evictions for nonpayment of rent while on a 12-month lease
 - 12 months to reduce rent burden through increasing earned income or identifying opportunities to increase household income



PARTNERS IN CARE *Oahu's Continuum of Care*

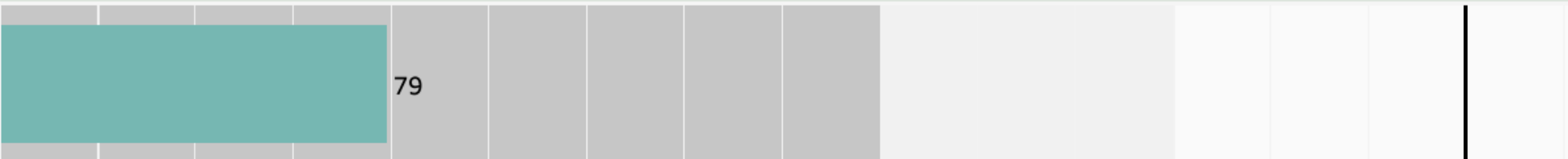
Mission: To eliminate homelessness through open and inclusive participation and the coordination of integrated responses

O'ahu Housing Now

Housing is Healthcare! The CARES ACT funded program, O'ahu Housing Now (OHN), plans to rehouse 300-350 households currently experiencing homelessness, and provide these households with housing rental assistance for 12 full months. OHN will accomplish this through a novel Rapid Rehousing (RRH) approach integrating a vast network of providers, funder and community stakeholders. During this time, OHN has two main objectives: slow the spread of COVID-19 in the community and i..

Housing Goals..

Number of Households Housed



Number of Households Housed or with Active Enrollments

Enrolled Awaiting Housing (purple) indicates this those households who are currently enrolled in the OHN program and are on thier way to being housed. Currently Housed (green) indicates those in the OHN program who have been housed.

Adult Only Household		Family with Minor Children		Single Adult		Total Households	
Enrolled Awaiting Housing	Number of Households Housed	Enrolled Awaiting Housing	Number of Households Housed	Enrolled Awaiting Housing	Number of Households Housed	Enrolled Awaiting Housing	Number of Households Housed
5	11	23	35	12	34	40	80

O'ahu Housing Now

Timing Goals

All OHN clients are referred through the Coordinated Entry System (CES). After referral clients are enrolled into the OHN progr..

Adult Only Household	Avg. Days To Enrollment	6
	Avg. Enrollment to Housed	20
Family with Minor Children	Avg. Days To Enrollment	6
	Avg. Enrollment to Housed	16
Single Adult	Avg. Days To Enrollment	6
	Avg. Enrollment to Housed	14
Grand Total	Avg. Days To Enrollment	6
	Avg. Enrollment to Housed	16

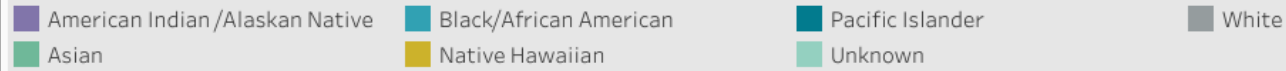
O'ahu Housing Now

Household Demographics

Understanding the demographics of the clients we serve play in an intergral role in ensuring racial equity and that the OHN program accurately reflects the population that we are serving.

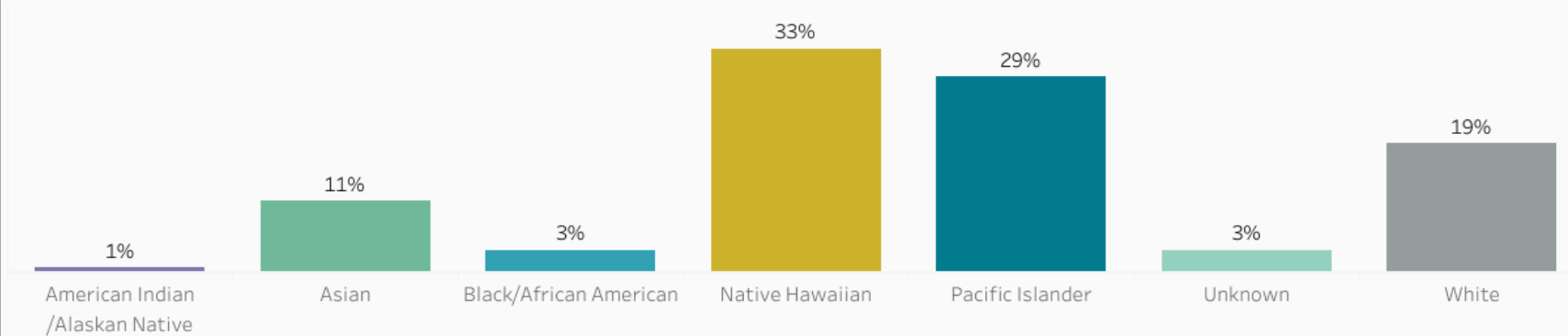
Native Hawaiian is separated from Pacific Islander (Samoan, Tongan, Marsahellese, Micronesian, etc) to ensure equitable rehousing efforts considering the disproportionate impact of homelessness among Native Hawaiians on O'ahu.

Race



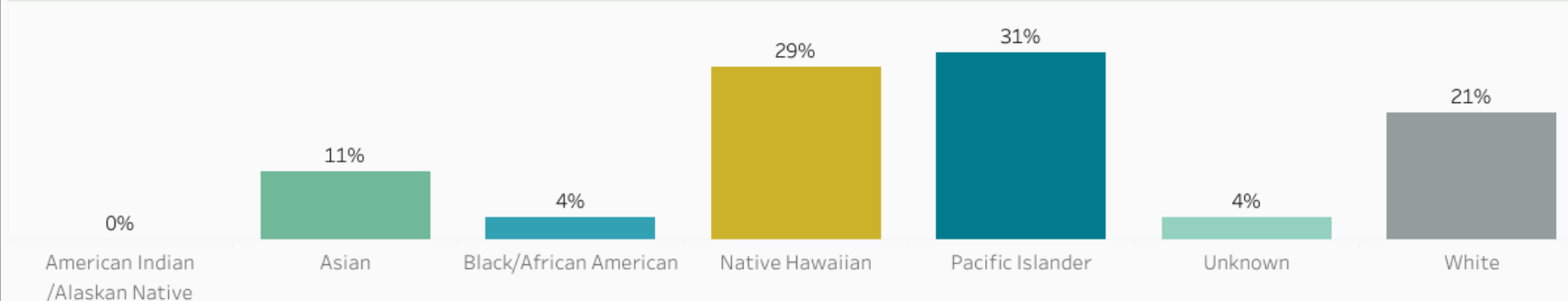
Race of Enrolled OHN Population

This is ONLY the race of the Head of Household Enrolled clients indicates those who are currently enrolled and awaiting housing and those who have been housed.



Race of Housed OHN Population

This is ONLY the race of the Head of Household This graph looks at the racial breakdown of those individuals who have been successfully housed through the OHN program.



Next Steps

Build 250 Home Kits



300 +
Households
Housed and
Stable!!!

Locate 250 +
Units



Move On
Strategy



Case Manage Current
and New Clients

Engage Landlords



Housing
Fair



Build
Capacit

v

Questions?

Thank you!



Homeless

PARTNERS IN CARE *Oahu's Continuum of Care*

Mission: To eliminate homelessness through open and inclusive participation and the coordination of integrated responses