



# Connecting on **The Road to Home**

PRIVATE SECTOR PARTNERSHIPS TO ADDRESS  
HOMELESSNESS AND POVERTY (AUGUST 2022)

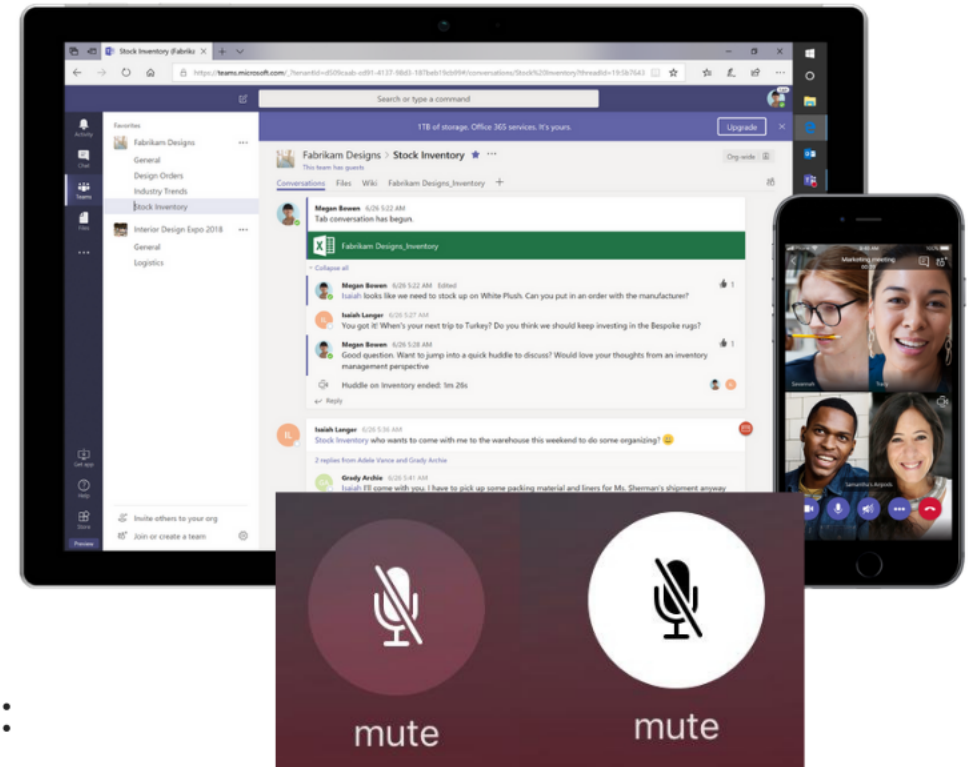


# Housekeeping Reminders

**Please Mute Your Microphone.  
Enter Questions in the Chat Box  
or Raise Your Hand.**

A recording of this webinar and copies of the presentation materials will be available online at:

**<https://homelessness.hawaii.gov/monthly-webinars/>**



August 2022

CoC NOFO Updates

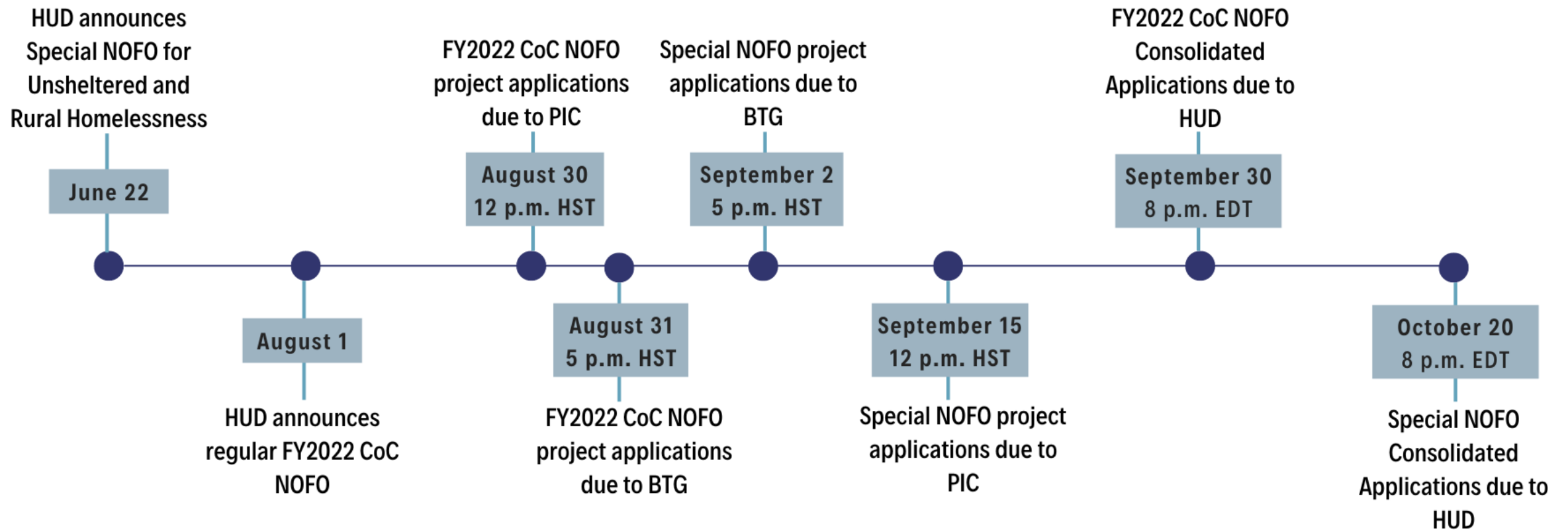
County Funding Updates

Housing Advocacy Updates

# CoC NOFO Updates

- HUD announced a Special NOFO for Unsheltered and Rural Homelessness on June 22nd.
  - PIC (Oahu) is eligible to apply for Unsheltered funding.
  - BTG (neighbor islands) is eligible to apply for Unsheltered funding and Rural funding (Hawaii and Kauai counties).
- HUD announced the FY2022 NOFO competition for annual CoC funds on August 1st.
- Project applications are submitted through the CoC Collaborative Applicants.

# CoC NOFO Timelines





August 2022

CoC NOFO Updates

County Funding Updates

Housing Advocacy Updates

# CoC NOFO Updates

For more information about the CoC NOFO application processes, please contact the respective Collaborative Applicants for the CoCs:

## **Partners in Care (Oahu CoC)**

<http://partnersincareoahu.org>

[elliottw@partnersincareoahu.org](mailto:elliottw@partnersincareoahu.org)

## **Ka Mana O Na Helu (Bridging the Gap)**

<http://btghawaii.org>

[carlos@kamanaonahelu.org](mailto:carlos@kamanaonahelu.org)

August 2022

CoC Special NOFO Timelines

County Funding Updates

Housing Advocacy Updates

# County Funding Updates

## City & County of Honolulu

- The City recently announced six affordable housing projects that will produce 972 new units within the next 5 years. Additional housing funding opportunities will be available soon.
- GIA awards have been announced for FY2023.
- \$30M will be available soon for non-profits impacted by COVID-19.

## County of Kauai

- The County is currently accepting GIA applications from qualified non-profits. Applications are due by September 1st at 4:30 p.m. HST.

August 2022

CoC Special NOFO Timelines

County Funding Updates

Housing Advocacy Updates

# Housing Advocacy Updates

## Supportive Housing Work Group

- The group continues to meet on the 3rd Tuesdays at 10 a.m.
- Next steps - subpopulation stakeholder meetings.
- Please contact [cheryl.a.bellisario@hawaii.gov](mailto:cheryl.a.bellisario@hawaii.gov) if your agency is interested in participating.

## PIC & BTG Joint Advocacy Group

- The group continues to meet on the 4th Fridays at 12 p.m.
- Honolulu City Council staff will be attending this week's meeting to share information about the Council's processes and helpful tips for advocates.
- Please contact [cheryl.a.bellisario@hawaii.gov](mailto:cheryl.a.bellisario@hawaii.gov) if your agency is interested in participating.

August 2022

CoC Special NOFO Timelines

County Funding Updates

Housing Advocacy Updates

# Housing Advocacy Updates

## 2022 Statewide Homeless Awareness & Housing Solutions Conference

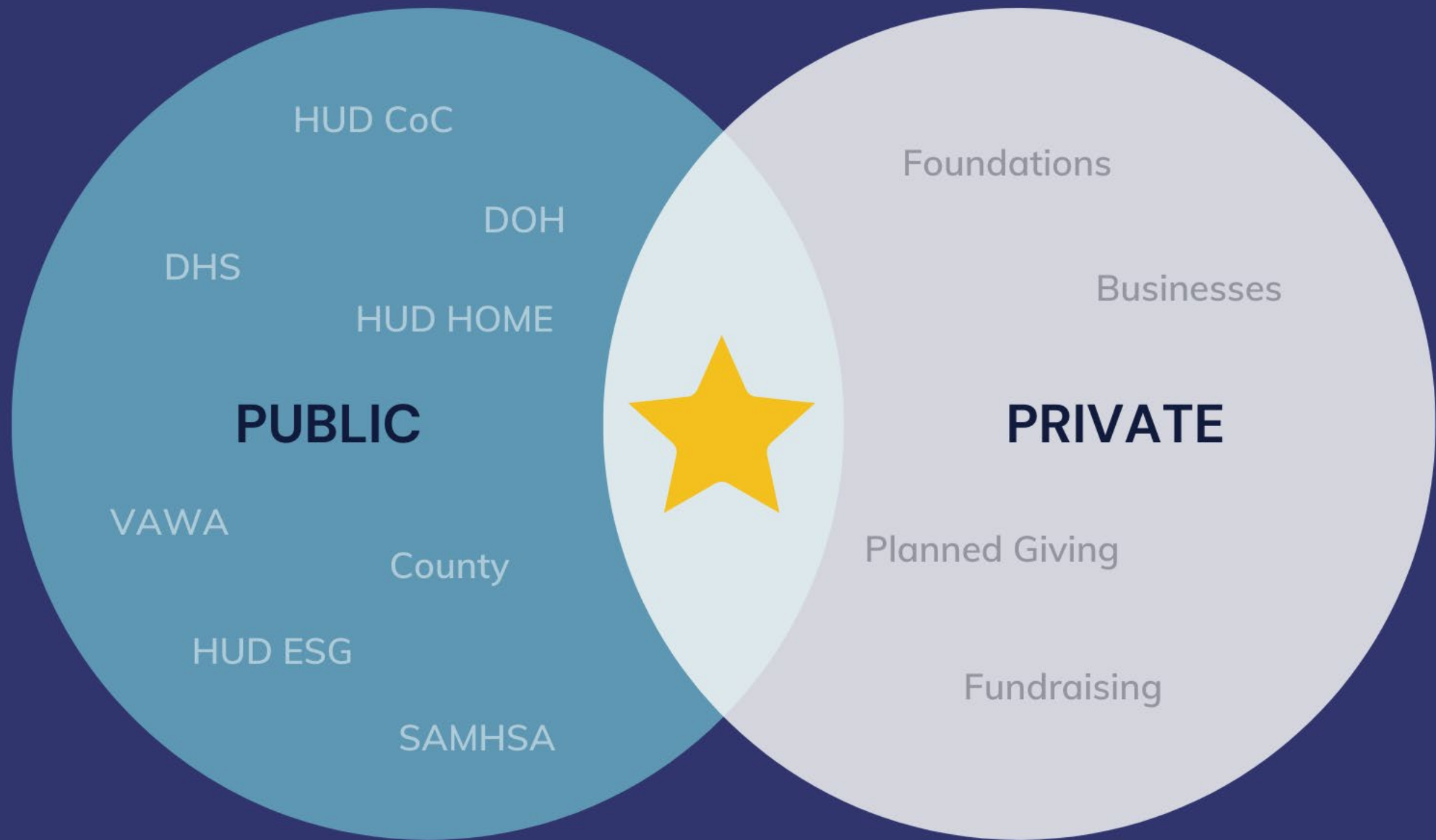
*"Welcome Home: Working Together for Our Community"*

- This year's conference will be held on **Friday, November 18th** from 8:30 a.m. - 4:30 p.m. at the Koolau Ballroom.
- Online registrations are available on Partners in Care's website at <http://partnersincareoahu.org/2022-conf>.
- Be on the lookout for additional advocacy and awareness events during the month of November!





# Private Sector Partnerships



# Private sector investments may help with...



- One-time or startup costs to accelerate new initiatives



- Flexible funding for "gap" areas of need within existing programs



- In-kind contributions, such as real estate or supplies



- Comprehensive programs for a specific population

# Benefits



## Mutual partnership

Public-private partnerships can directly address areas of mutual need.



## Leveraging resources

Public-private partnerships encourage stakeholders to leverage multiple resources and diversify revenue streams.



## Social impact

Public-private partnerships offer opportunities for private sector entities to support meaningful community projects.



**August 2022**

**Private Sector  
Partnerships  
to Address  
Homelessness  
and Poverty**



**Genevieve Noriega**  
Aloha United Way

---



**Monique Ibarra**  
Ka Hale A Ke Ola



# Hawaii ALICE Initiative by Aloha United Way

For The Office of Homelessness &  
Housing Solutions  
August 2022 Monthly Webinar



# ALICE = Asset Limited, Income Constrained, Employed



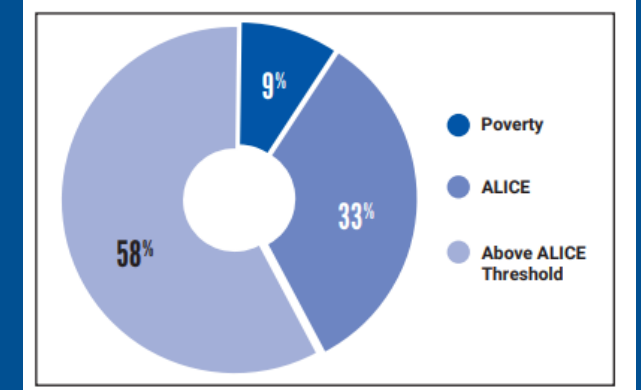
## HONOLULU COUNTY INCOME SCHEDULE BY FAMILY SIZE

2022

THE FOLLOWING TABLE PRESENTS INCOME LIMITS BY FAMILY SIZE AND BY PERCENTAGES OF THE VERY LOW INCOME LEVELS ESTABLISHED BY HUD. THESE INCOME LIMITS SERVE AS GUIDELINES TO ESTABLISH SALES/RENTAL PREFERENCES.

		LIMITS BY FAMILY SIZE							
MEDIAN		1 PERSON	2 PERSON	3 PERSON	4 PERSON	5 PERSON	6 PERSON	7 PERSON	8 PERSON
\$113,300									
Adjustments									
for family size		0.7000	0.8000	0.9000	1.0000	1.0800	1.1600	1.2400	1.3200
POVERTY	10%	\$9,150	\$10,450	\$11,760	\$13,060	\$14,110	\$15,150	\$16,200	\$17,240
	20%	\$18,300	\$20,900	\$23,520	\$26,120	\$28,220	\$30,300	\$32,400	\$34,480
	30%	\$27,450	\$31,350	\$35,280	\$39,180	\$42,330	\$45,450	\$48,600	\$51,720
	40%	\$36,600	\$41,800	\$47,040	\$52,240	\$56,440	\$60,600	\$64,800	\$68,960
	50%	\$45,750	\$52,250	\$58,800	\$65,300	\$70,550	\$75,750	\$81,000	\$86,200
	60%	\$54,900	\$62,700	\$70,560	\$78,360	\$84,660	\$90,900	\$97,200	\$103,440
	70%	\$64,050	\$73,150	\$82,320	\$91,420	\$98,770	\$106,050	\$113,400	\$120,680
	80%	\$73,200	\$83,600	\$94,080	\$104,480	\$112,880	\$121,200	\$129,600	\$137,920
	90%	\$82,350	\$94,050	\$105,840	\$117,540	\$126,990	\$136,350	\$145,800	\$155,160
	100%	\$91,500	\$104,500	\$117,600	\$130,600	\$141,100	\$151,500	\$162,000	\$172,400
ALICE	110%	\$100,650	\$114,950	\$129,360	\$143,660	\$155,210	\$166,650	\$178,200	\$189,640
	120%	\$109,800	\$125,400	\$141,120	\$156,720	\$169,320	\$181,800	\$194,400	\$206,880
	130%	\$118,950	\$135,850	\$152,880	\$169,780	\$183,430	\$196,950	\$210,600	\$224,120
	140%	\$128,100	\$146,300	\$164,640	\$182,840	\$197,540	\$212,100	\$226,800	\$241,360

Based on 2020 ALICE Report for CY2018



Poverty = 9% = 41,619 households

ALICE = 33% = 148,771 households

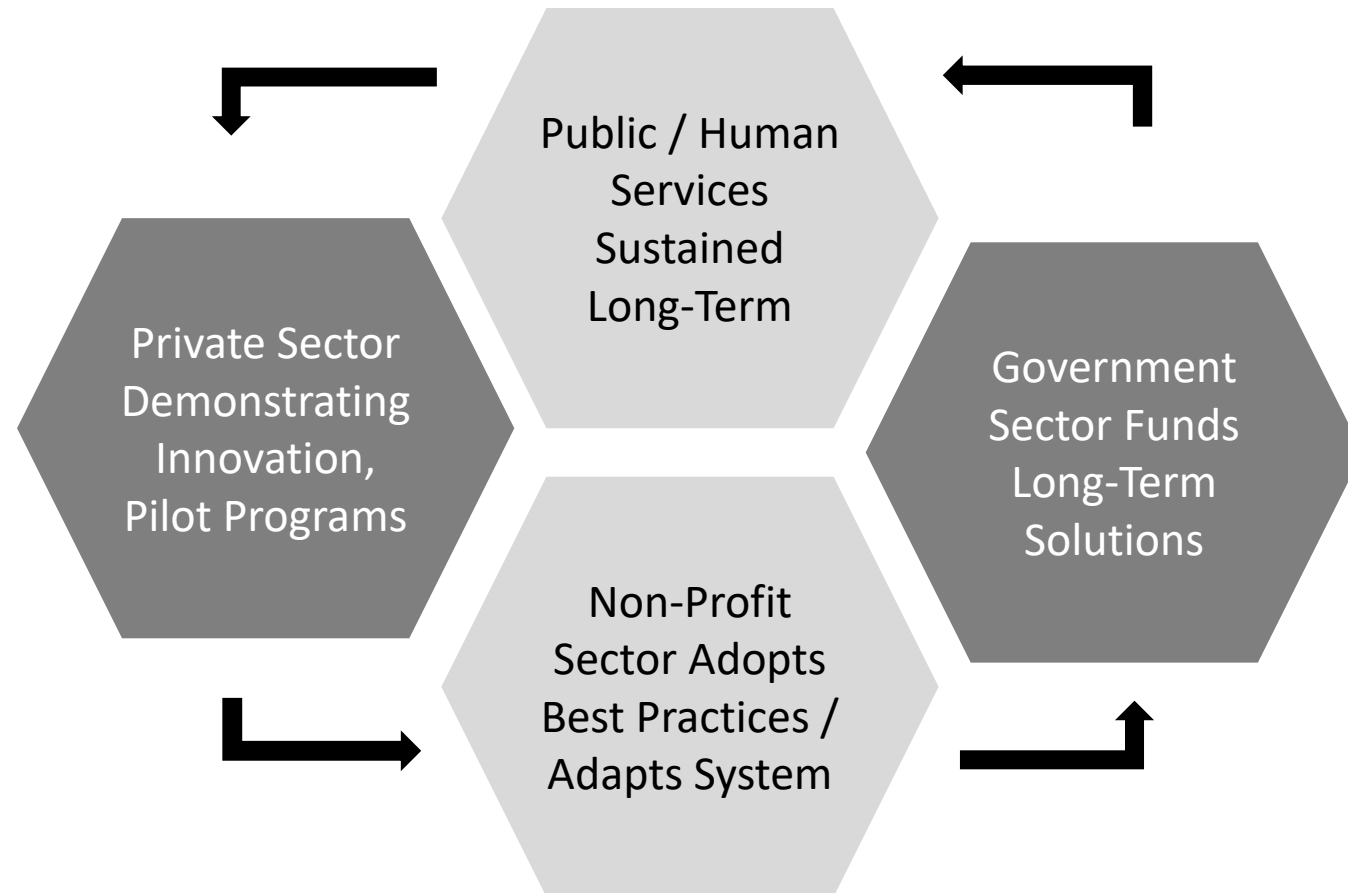
ALICE Threshold & Below = 42% =

*“Nearly all Hawaii households struggle to make ends meet”*

<http://dbedt.hawaii.gov/hhfdc/files/2022/04/2022-Income-Rent-Sales-Guidelines.pdf>

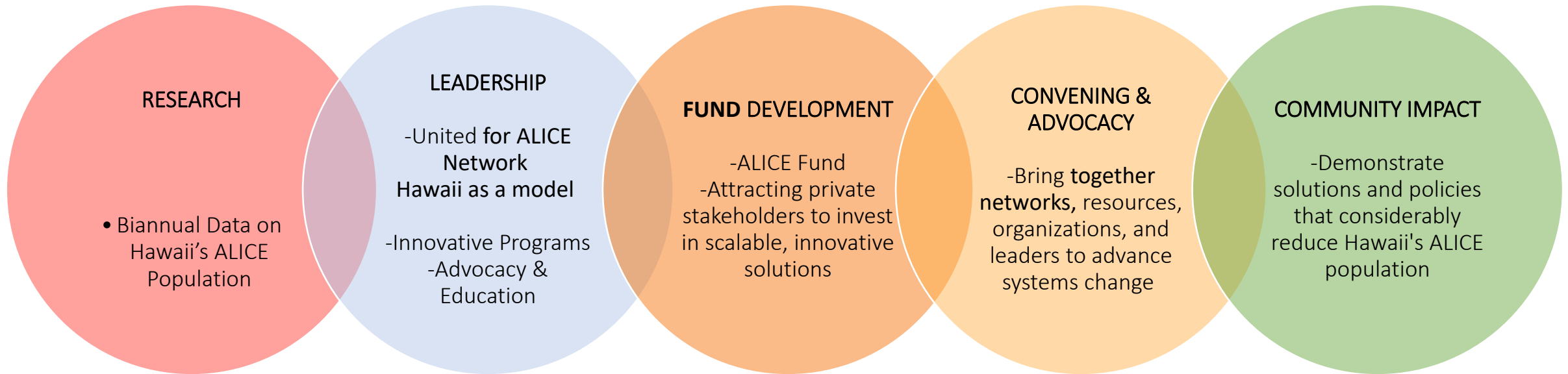
[https://www.auw.org/sites/default/files/pictures/2020ALICEReport\\_HI\\_FINAL.pdf](https://www.auw.org/sites/default/files/pictures/2020ALICEReport_HI_FINAL.pdf)

# Breaking the cycle of poverty & ALICE requires private sector innovation & influencing public sector solutions

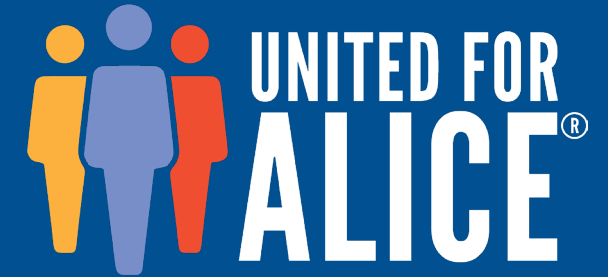
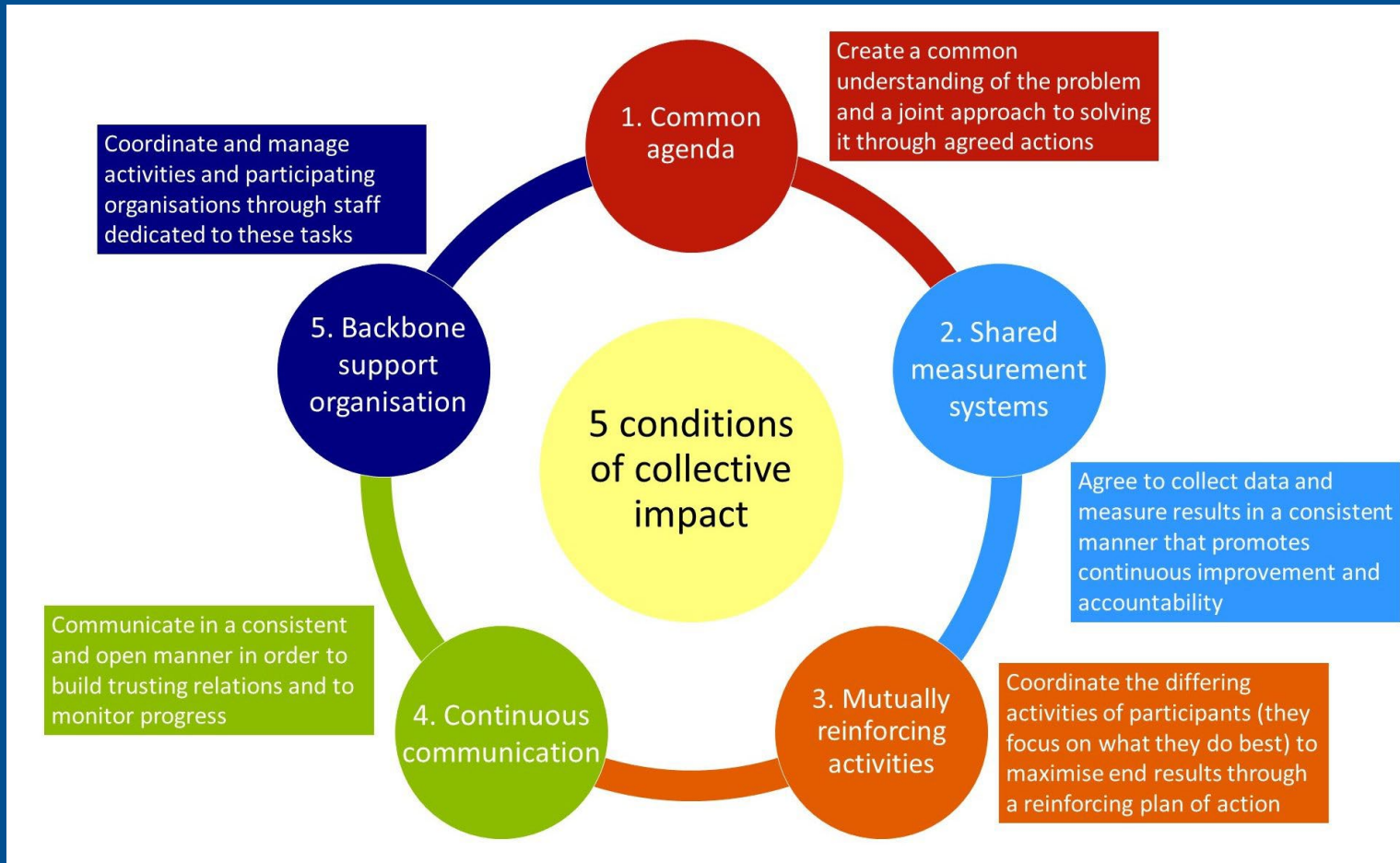


# HAWAII ALICE INITIATIVE

## IMPLEMENTING A COLLECTIVE IMPACT FRAMEWORK



# ALICE Collective Impact Initiative





# 2022-2024 ALICE Cohort:

*\$1.5M per year for 3 years demonstrating upward economic mobility*

## Economic Mobility



## Safe & Affordable Housing + Economic Mobility



KŌKUA KALIHI VALLEY



## Safe & Affordable Housing



# Mahalo nui for your time!






# Ka Hale A Ke Ola

Homeless Resource Centers, Inc.

Hale Ho'ola Medical Respite Shelter

Monique Ibarra, Executive Director

An aerial photograph of the island of Maui, Hawaii, showing its rugged terrain with green forested areas and brownish mountain peaks. Two yellow stars are placed on the western side of the island, indicating specific locations. The surrounding ocean is dark blue.

Established in 1986  
Located on the  
island of Maui...

....Breaking the cycle of  
homelessness on Maui...

#### Our Mission

- KHAKO is dedicated to serving the needs of the homeless and hungry on Maui by providing emergency food and housing, voicing their concerns, and empowering participants to take responsibility for their own lives, and to call on the community to assist in these actions.



# Emergency Shelter Programs

**KHAKEO** is a short-term, housing focused emergency shelter program that provides a safe, clean place to stay for persons in need of shelter with a strong focus on immediate placement into appropriate permanent housing and linkage to services.

**KHAKEO** operates facilities in Wailuku (central) and Lahaina (west side).

Central	Westside
670 Waiale Road Wailuku, HI 96793	15 Ipu 'Aumakua Lane Lahaina, HI 96761



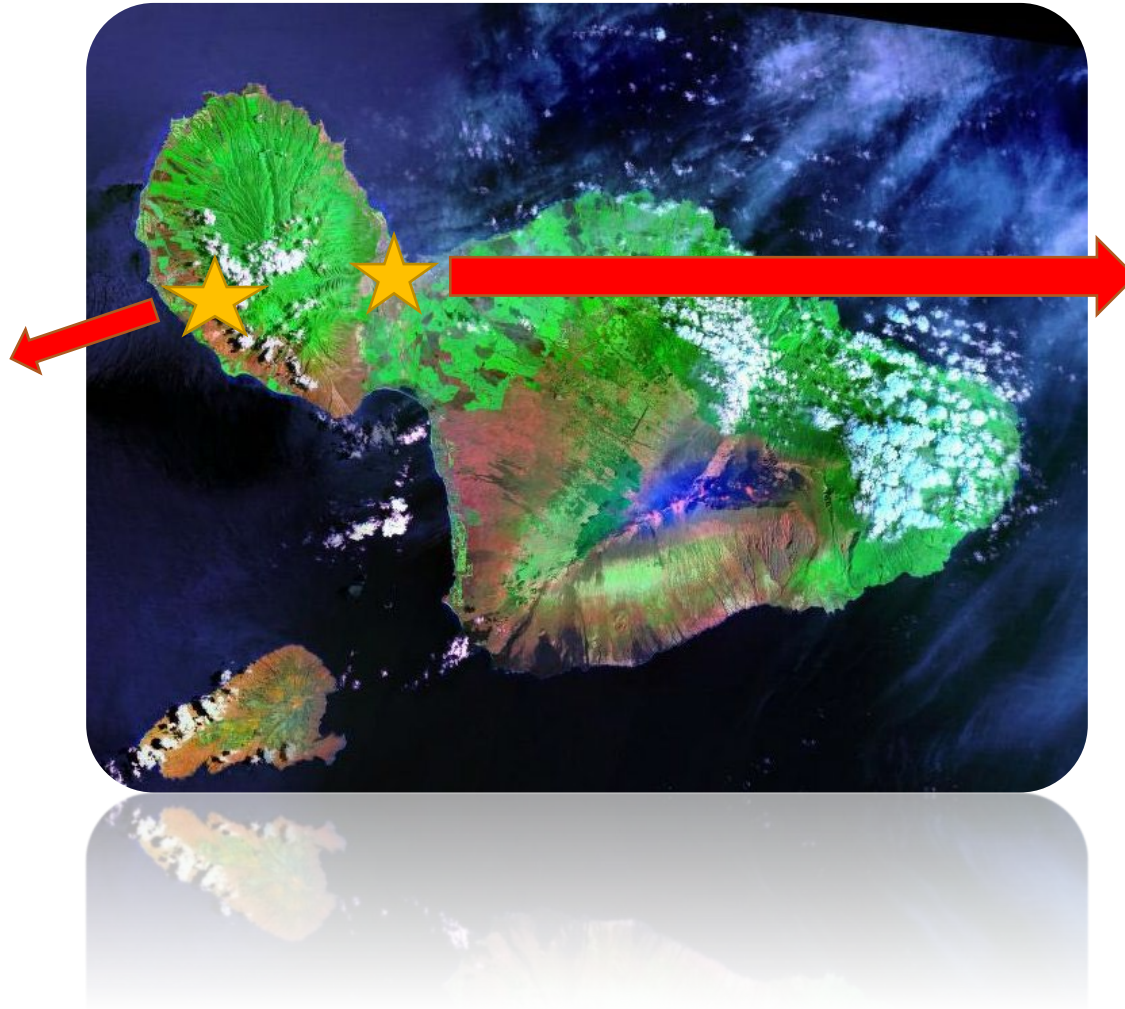
**Ka Hale A Ke Ola**  
Homeless Resource Centers, Inc.



## Westside Emergency Shelter - Lahaina



24 Studios  
24 2-Bedroom Units  
32 Beds Male Dorm  
10 Beds Female Dorm



## Central Emergency Shelter - Wailuku



40 Studios  
32 2-Bedroom Units  
32 Beds Male Dorm  
10 Beds Female Dorm

# The Why...

Too often Individuals who were homeless and discharged from the hospital or the Emergency Room were dropped off at KHAKO as a placement.

These individuals required a higher level of care and were not able to care for themselves as needed in the shelter program.

To seek a solution and close the gap for these vulnerable and medically fragile individuals, research began to fix the problem....







# Special Thanks to IHS – Connie Mitchell & Staff

- In 2018 – the leadership team from KHAKO and Social Workers from Maui Memorial Medical Center took a field trip to Oahu to visit Tutu Bert's and staff
- Connie Mitchell, CEO of IHS was extremely helpful and gracious to share info on how they started their respite shelter
- 2019 – KHAKO began operating Hale Ho'ola Medical Respite Shelter



# Hale Ho'ola Medical Respite Shelter Est. 2019

- The **KHAKO** Medical Respite Shelter program offers a 2-bedroom unit for up to 3 discharged patients that are homeless and no longer need 24-hour care at Maui Memorial Medical Center.
- Patients are referred to the program by MMMC social workers where patients can participate in the program for up to 45 days.
- National Institute for Medical Respite Care Membership
- The National Health Care for the Homeless Council membership



# What a Medical Respite Shelter is:

- Post-acute care for people experiencing homelessness who are too ill or frail to recover from illness or injury on the street or in shelter, but not sick enough to warrant hospital level care.
- Short-term residential care that allows people the opportunity to rest, recover, and heal in a safe environment while accessing medical care and supportive services.



# What Medical Respite Shelter does:

- Offers safe and cost-effective discharge options
- Connects vulnerable homeless patients with to a broad range of community care and services
- Provides a safe space to heal and recover
- Case management with goal of permanent housing placement
- Offers diversion from continued Emergency Room use



# Hale Ho'ola Respite Shelter is not:

- A Medical facility, skilled nursing facility, nursing home, assisted living, behavioral health step-down, or supportive housing.



A photograph of a room with two single beds, a dresser, and windows with blue curtains. The room is brightly lit by natural light from the windows. The beds have green mattresses and wooden frames. A white dresser is positioned between the two beds. The walls are white, and the floor is a light-colored tile.

# Basic Admission Criteria

- Must be homeless
- Referred from Maui Memorial Medical Center health care facility in Maui County
- Medically and behaviorally stable (not a risk to self or others, appropriate for group setting)
- Acute medical problem requiring short-term respite care
- Independent in mobility, transfer, feeding, not known to be fall-risk at this time
- Agreeable to admission and receiving care from Respite staff
- Has post-discharge home health care follow-ups



# Services offered

- home health visits on site,
- meals through food services,
- room cleaning,
- housing application help,
- application help for SNAP and GA benefits.

Once participants no longer require home health care they are given the opportunity to enter in to the **KHAKO** shelter program.





# Statistics

- Since 2019, over 45 individuals have utilized Hale Ho'ola Respite Shelter
- 4 exited to Permanent Housing
- 12 entered Emergency Shelter
- Other discharges
  - Return to hospital
  - Family
  - Relocated to Mainland
  - Unknown
  - 1 deceased (at return to hospital)







# Funding for Hale Ho'ola

- 100% Maui Memorial Medical Center contract – no federal, state, or county grant funding
- Potential future funding:
  - Malama I Ke Ola Health Clinic
  - Kaiser Med-Quest
  - Medicare/Medicaid



# Plans for Expansion

Expanded partnerships with:

Malama I Ke Ola clinic

- Diversion from hospital
- Pre-op care and preparation

Kaiser Med-Quest

- Additional beds for care

Building 9 Expansion to add 6 more beds

Total of 12 beds for Medical Respite shelter by mid 2023



# Monique R. Ibarra, MSW



Executive Director

*Pronouns: She/Her/Hers ([what's this?](#))*

Ka Hale A Ke Ola Homeless Resource  
Centers, Inc.  
670 Waiale Road  
Wailuku, HI 96793

Ph: (808) 446-8133

[www.khako.org](http://www.khako.org)

*Mahalo*



**Ka Hale A Ke Ola**  
Homeless Resource Centers, Inc.



# Stay In Touch

If you have any questions regarding the webinars, or have suggestions for future topics, please contact our office.

**Justin Limasa**

GCH Homelessness Assistant

808-586-0193

[gov.homelessness@hawaii.gov](mailto:gov.homelessness@hawaii.gov)







# 2022 Schedule

- Monday, September 26th
- Monday, October 24th

*Remember to register for the Statewide Homelessness  
Awareness & Housing Solutions Conference on  
November 18th!*



# Connecting on **The Road to Home**

NEXT INSTALLMENT

SEP

MONTH

26

DAY

2022

YEAR

12:00 P.M. TO 1:00 P.M.