

# WELINA

---

WELCOME

# **BRIEF INTRO OF HALE KIPA AND OUR SERVICES**







**KAUHALE 'ŌPIO:  
WHAT MAKES  
US UNIQUE**

















# ALL ABOUT THE 'ŌPIO: STORIES



# MAHALO



FOR COMING





# 2025 Legislative Session Updates Relating to the Kauhale Initiative

---

**Jun Yang**  
Coordinator on Homelessness

**Statewide Office on  
Homelessness and Housing Solutions**

Presentation to the Hawaii Interagency Council on Homelessness  
September 16, 2025





# SOHHS Overview

---

- Established as an attached agency to DHS via Act 252 (SLH 2022), previously a temporary special project
- Develop and test innovative solutions to ending homelessness
- Identify and address gaps in the homeless service system
- Coordinate Hawai'i Interagency Council on Homelessness





# Strategic Vision

---

1. People are in homes.
2. We have a robust housing ladder.
3. Hawai'i is a national leader in ending homelessness.





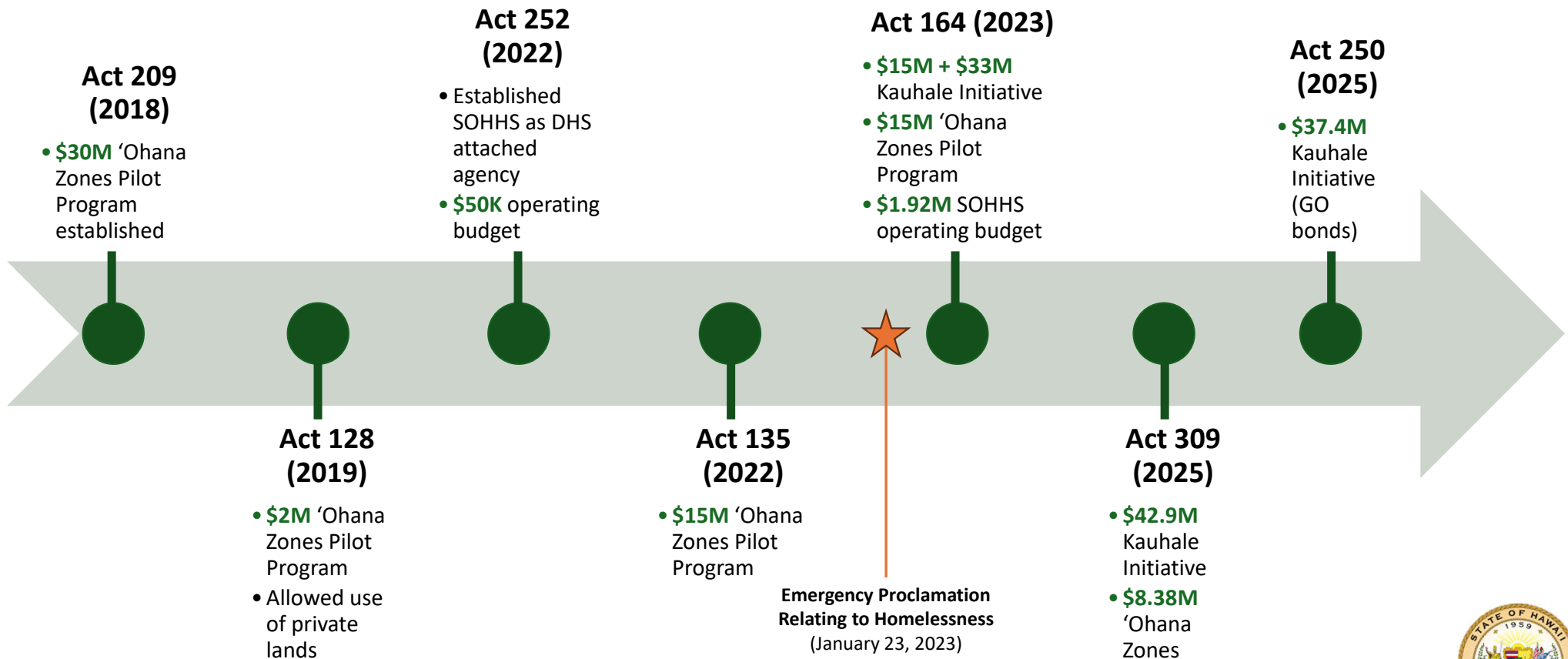
**Where We Are:**

---

# **Executing Innovative Homelessness Solutions**



# Funding Map





# ‘Ohana Zones

---

- Leveraging State and county resources to support projects
- Creating pathways for homeless individuals who were not prioritized for existing federal or local resources
- Built-in flexibilities regarding use of funds
- Catalyst for future homelessness partnerships with counties





# Kauhale Initiative

---

- **Quickly** move people off the streets
- Create a sense of **community** to promote healing and transformation
- Demonstrate **cost-effectiveness** and optimization of resources





# Kauhale Initiative

---

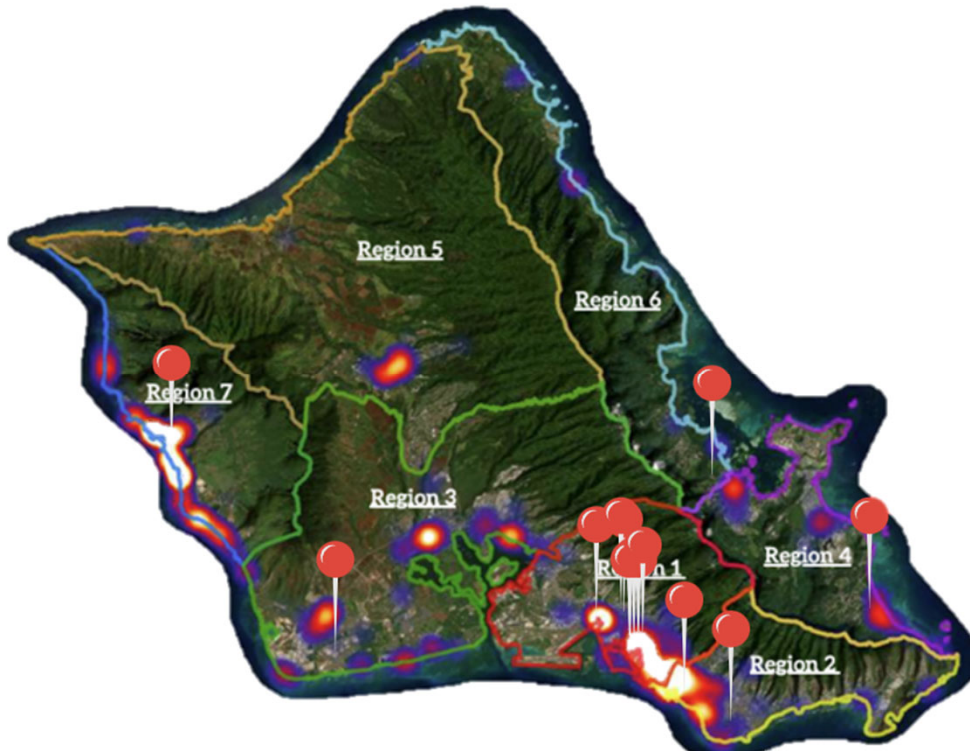


- 23 projects statewide
- 848 beds
- Subpopulations
  - Singles and couples
  - Medical respite
  - Families
  - Domestic violence
  - Young adults



# Kauhale: O'ahu

---



- 16 projects
- 5 prospective sites in the pipeline
- Combination of new construction and conversion of existing structures
- High concentration of projects in the Iwilei corridor, including medical respite and behavioral health projects

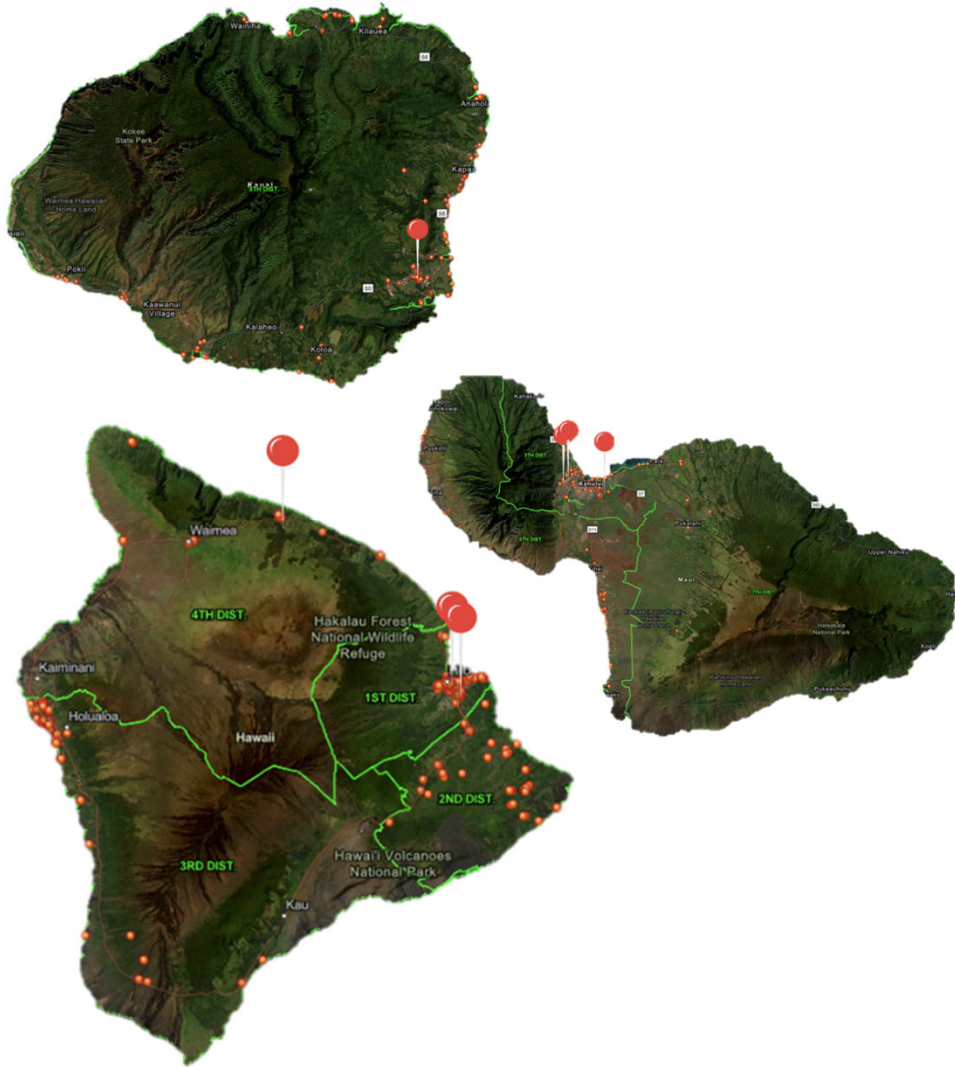




# Kauhale: Neighbor Islands

---

- 7 projects
- 2 prospective sites in the pipeline
- Most neighbor island projects are utilizing existing or converted structures
- Most sites under consideration require substantial infrastructure upgrades



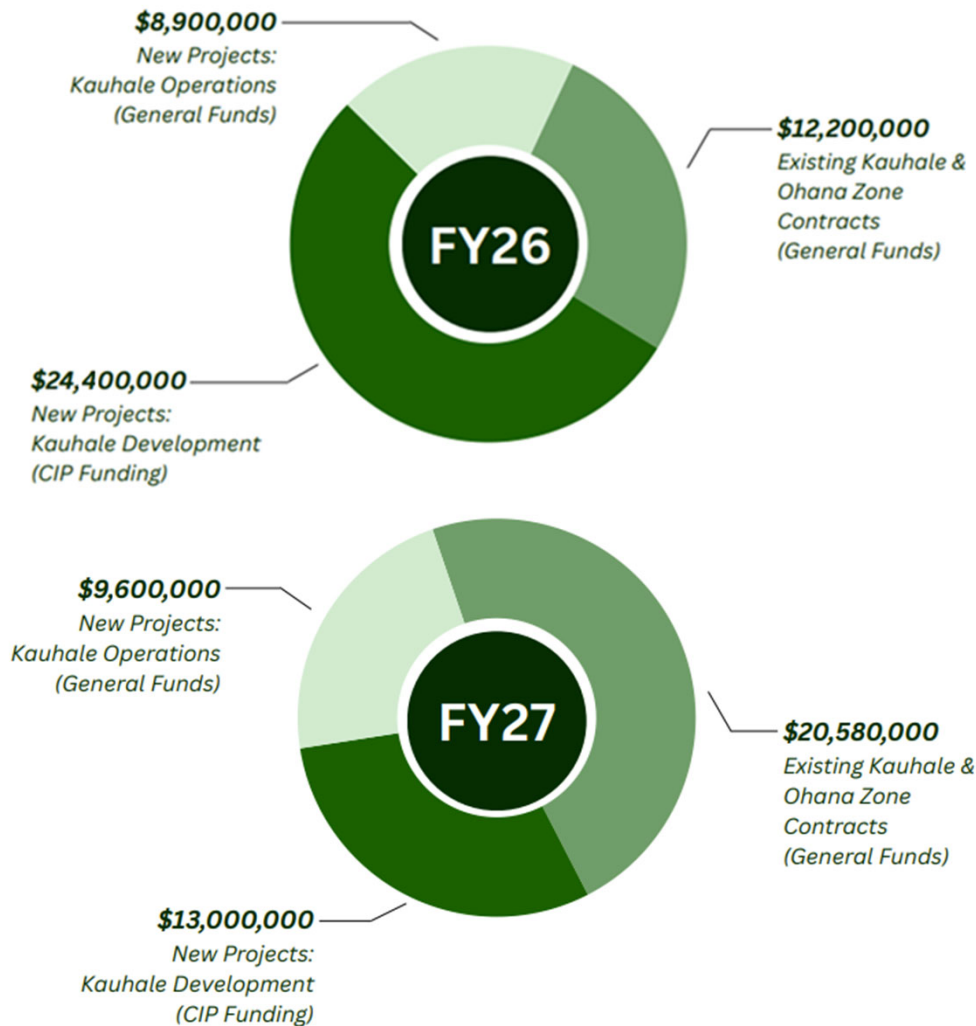
**Where We Are Going:**

---

# **Scaling Innovative Homelessness Solutions**







## TOTAL ACT 309 BUDGET FOR FY26-27:

**\$88,680,000**



# FY26-27 Pipeline

---

## Operating Funds

- Extend existing Kauhale projects
- Extend existing 'Ohana Zone projects
- Service and operating contracts for new Kauhale projects

## CIP Funds

- New construction on State lands
- Acquisition of real property
- Infrastructure upgrades on State lands
- Accelerated process using EP





# Additional Requirements

---

- Reporting
- Evaluation and assessment criteria
- 2+ bids for construction/development exceeding \$1 million
- Needs assessment and recommendations



# KAUHALE

## Expand Housing Inventory

- New CIP projects
- Expansion of existing sites
- Collaboration with other State housing agencies

## Optimize Existing Resources

- Maximize flow at existing sites
- Create pathways from Kauhale
- Private sector champions

## Data and Policy Alignment

- Strengthen statewide data sharing
- Strategic cross-sector collaboration
- Align external resources with State policy values





# Long-Term Impacts: Unsheltered Homelessness

---

- Kauhale and 'Ohana Zone projects create additional pathways off the streets and out of emergency services.
- Residents receive wraparound supportive services and person-focused housing navigation assistance to prevent returns to unsheltered homelessness.



# Long-Term Impacts: Unsheltered Homelessness

## UNSHELTERED

- Not suitable for human habitation

## SHELTERS

- Often congregate
- Short-term
- Limited opportunities to build community

## KAUHALE

- Private sleeping spaces, communal living spaces
- No arbitrary time limits
- Semi-independent living with opportunities to build tenancy skills
- Emphasis on community building

## INDEPENDENT LIVING

- Public housing
- Section 8/HCV
- LIHTC
- Permanent Supportive Housing
- Family reunification

- Kauhale villages intentionally fill the gap between shelters and fully independent living options, helping residents prepare for independent living while stabilizing in a supportive, healing environment
- Kauhale villages increase flow within the existing network of homeless services by creating “step up” opportunities for residents of existing shelters

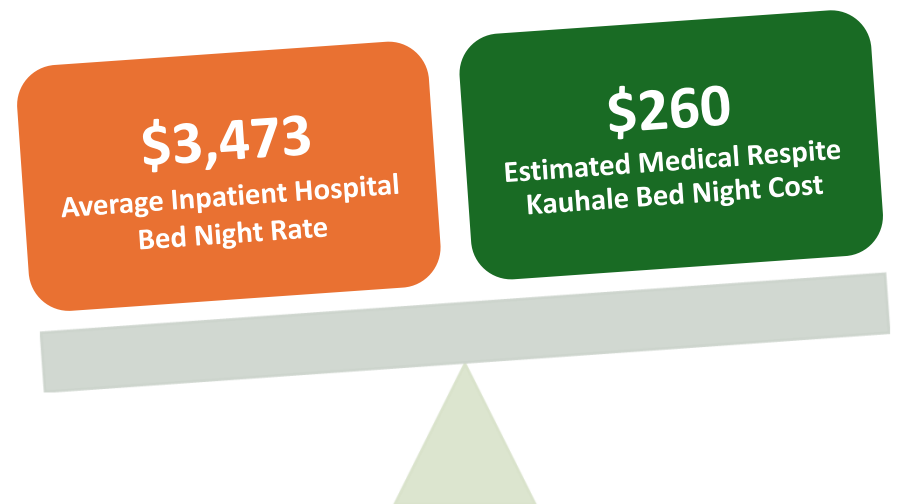




# Long-Term Impacts: Cost Savings

- Unsheltered individuals represent a large percentage of Medicaid high utilizers due to frequent emergency room visits
- Kauhale provide safe, stable alternatives to costly emergency room and hospital stays
- Medical respite Kauhale provide appropriate step-down care for fragile individuals who would otherwise remain hospitalized or be discharged to the streets

One medical respite Kauhale could save over **\$1.3 million** in annual hospital costs.



*Cost savings based on 7 hospital bed nights compared to 7 medical respite Kauhale bed nights, for a Kauhale site with capacity for 62 individuals.*



# Long-Term Impacts: Cost Savings

## CASE STUDY: HO'OKAHI LEO KAUAHALE – O'AHU



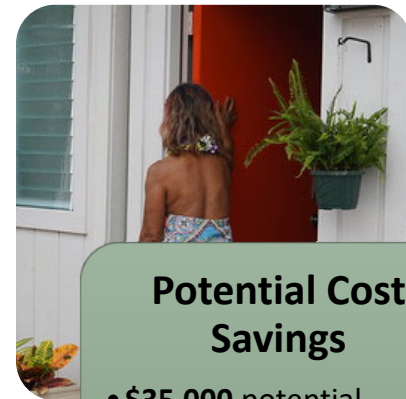
### Increased Health Services

- **100%** of residents received access to health services
- **Over half** reconnected with a PCP



### Reduced ER Visits

- Residents averaged **2-3 ER visits per week** before moving into the Kauhale
- Since moving in, ER visits averaged **1 per month**



### Potential Cost Savings

- **\$35,000** potential monthly savings per resident, based on reduced ER visits
- Additional cost savings from preventive care





# Long-Term Impacts: Healthier Communities

---

- Improved physical and mental health outcomes for formerly homeless individuals
- Reduced impacts of unsheltered homelessness on housed neighbors and businesses
- Improved pathways out of homelessness and diversion from homelessness





# Statewide Office on Homelessness & Housing Solutions

GOV.HOMELESSNESS@HAWAII.GOV

(808) 586-0193

